

**K Cadherin (CDH6) Antibody (C-term)**  
**Affinity Purified Rabbit Polyclonal Antibody (Pab)**  
**Catalog # AP1415b****Specification**

---

**K Cadherin (CDH6) Antibody (C-term) - Product Information**

Application	FC, WB, IHC-P,E
Primary Accession	<a href="#">P55285</a>
Reactivity	Human
Host	Rabbit
Clonality	Polyclonal
Isotype	Rabbit IgG
Antigen Region	665-695

**K Cadherin (CDH6) Antibody (C-term) - Additional Information****Gene ID** 1004**Other Names**

Cadherin-6, Kidney cadherin, K-cadherin, CDH6

**Target/Specificity**

This K Cadherin (CDH6) antibody is generated from rabbits immunized with a KLH conjugated synthetic peptide between 665-695 amino acids from the C-terminal region of human K Cadherin (CDH6).

**Dilution**

FC~~1:10~50

WB~~1:1000

IHC-P~~1:10~50

E~~Use at an assay dependent concentration.

**Format**

Purified polyclonal antibody supplied in PBS with 0.09% (W/V) sodium azide. This antibody is purified through a protein A column, followed by peptide affinity purification.

**Storage**

Maintain refrigerated at 2-8°C for up to 2 weeks. For long term storage store at -20°C in small aliquots to prevent freeze-thaw cycles.

**Precautions**

K Cadherin (CDH6) Antibody (C-term) is for research use only and not for use in diagnostic or therapeutic procedures.

**K Cadherin (CDH6) Antibody (C-term) - Protein Information****Name** CDH6

**Function** Cadherins are calcium-dependent cell adhesion proteins. They preferentially interact with themselves in a homophilic manner in connecting cells; cadherins may thus contribute to the sorting of heterogeneous cell types.

**Cellular Location**

Cell membrane; Single-pass type I membrane protein

**Tissue Location**

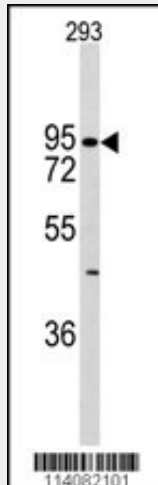
Highly expressed in brain, cerebellum, and kidney. Lung, pancreas, and gastric mucosa show a weak expression. Also expressed in certain liver and kidney carcinomas

**K Cadherin (CDH6) Antibody (C-term) - Protocols**

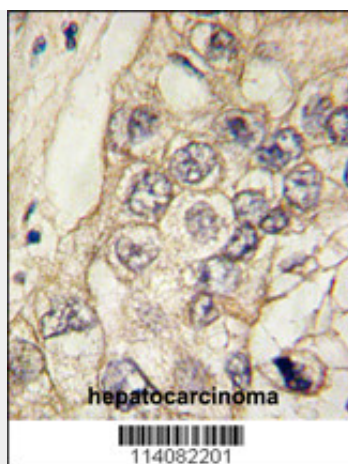
Provided below are standard protocols that you may find useful for product applications.

- [Western Blot](#)
- [Blocking Peptides](#)
- [Dot Blot](#)
- [Immunohistochemistry](#)
- [Immunofluorescence](#)
- [Immunoprecipitation](#)
- [Flow Cytometry](#)
- [Cell Culture](#)

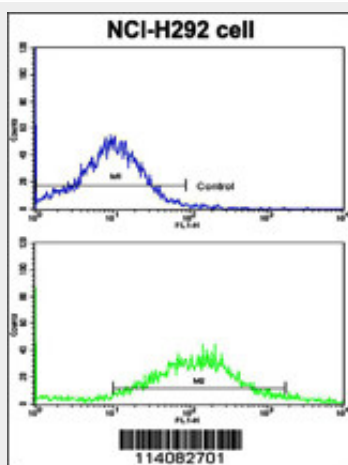
**K Cadherin (CDH6) Antibody (C-term) - Images**



Western blot analysis of anti-DH6 Antibody (C-term) (RB14082) in 293 cell line lysates (35ug/lane). DH6(arrow) was detected using the purified Pab.



Formalin-fixed and paraffin-embedded human hepatocarcinoma tissue reacted with CDH6 antibody (C-term) (Cat.#AP1415b), which was peroxidase-conjugated to the secondary antibody, followed by DAB staining. This data demonstrates the use of this antibody for immunohistochemistry; clinical relevance has not been evaluated.



Flow cytometric analysis of NCI-H292 cells using CDH6 Antibody (C-term)(bottom histogram) compared to a negative control cell (top histogram). FITC-conjugated goat-anti-rabbit secondary antibodies were used for the analysis.

### **K Cadherin (CDH6) Antibody (C-term) - Background**

CDH6 is a type II classical cadherin from the cadherin superfamily. It is a calcium dependent cell-cell adhesion membrane glycoprotein comprised of five extracellular cadherin repeats, a transmembrane region and a highly conserved cytoplasmic tail. Cadherins mediate cell-cell binding in a homophilic manner, contributing to the sorting of heterogeneous cell types and the maintenance of orderly structures such as epithelium. Strong transcriptional expression of the CDH6 gene has been observed in hepatocellular and renal carcinoma cell lines, suggesting a possible role in metastasis and invasion.

### **K Cadherin (CDH6) Antibody (C-term) - References**

- Liu,T., J. Proteome Res. 4 (6), 2070-2080 (2005)
- Shimoyama,Y., Biochem. J. 349 (PT 1), 159-167 (2000)
- Shimoyama,Y., J. Biol. Chem. 274 (17), 11987-11994 (1999)