

**Mouse Scyl2 Antibody (Center)**  
**Affinity Purified Rabbit Polyclonal Antibody (Pab)**  
**Catalog # AP14165c**

**Specification**

---

**Mouse Scyl2 Antibody (Center) - Product Information**

Application	WB,E
Primary Accession	<a href="#">Q8CFE4</a>
Other Accession	<a href="#">NP_932138.1</a>
Reactivity	Human, Mouse
Host	Rabbit
Clonality	Polyclonal
Isotype	Rabbit IgG
Antigen Region	585-613

**Mouse Scyl2 Antibody (Center) - Additional Information**

**Gene ID** 213326

**Other Names**

SCY1-like protein 2, Coated vesicle-associated kinase of 104 kDa, Scyl2, Cvak104, D10Ertd802e

**Target/Specificity**

This Mouse Scyl2 antibody is generated from rabbits immunized with a KLH conjugated synthetic peptide between 585-613 amino acids from the Central region of mouse Scyl2.

**Dilution**

WB~~1:1000

**Format**

Purified polyclonal antibody supplied in PBS with 0.09% (W/V) sodium azide. This antibody is purified through a protein A column, followed by peptide affinity purification.

**Storage**

Maintain refrigerated at 2-8°C for up to 2 weeks. For long term storage store at -20°C in small aliquots to prevent freeze-thaw cycles.

**Precautions**

Mouse Scyl2 Antibody (Center) is for research use only and not for use in diagnostic or therapeutic procedures.

**Mouse Scyl2 Antibody (Center) - Protein Information**

**Name** Scyl2 {ECO:0000312|MGI:MGI:1289172}

**Function** Component of the AP2-containing clathrin coat that may regulate clathrin-dependent trafficking at plasma membrane, TGN and endosomal system. A possible serine/threonine-protein kinase toward the beta2-subunit of the plasma membrane adapter complex AP2 and other

proteins in presence of poly-L-lysine has not been confirmed (By similarity). By regulating the expression of excitatory receptors at synapses, plays an essential role in neuronal function and signaling and in brain development (PubMed:[26203146](#)).

#### Cellular Location

Cytoplasmic vesicle, clathrin-coated vesicle {ECO:0000250|UniProtKB:Q6P3W7}. Golgi apparatus, trans-Golgi network membrane {ECO:0000250|UniProtKB:Q6P3W7}. Endosome membrane {ECO:0000250|UniProtKB:Q6P3W7}. Note=Colocalizes to the trans-Golgi network (TGN) and to endosomal membranes with clathrin, transferrin and plasma membrane adapter AP1 and AP3 complexes {ECO:0000250|UniProtKB:Q6P3W7}

#### Tissue Location

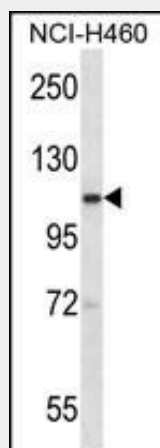
Ubiquitously expressed.

### Mouse Scyl2 Antibody (Center) - Protocols

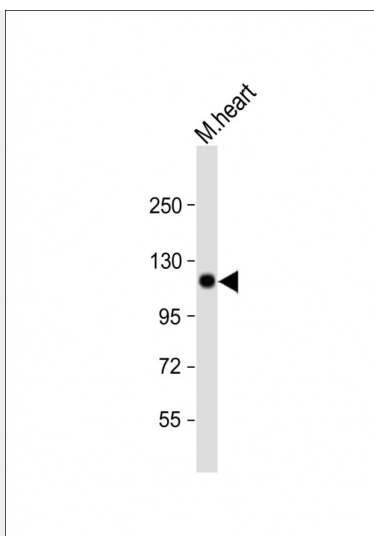
Provided below are standard protocols that you may find useful for product applications.

- [Western Blot](#)
- [Blocking Peptides](#)
- [Dot Blot](#)
- [Immunohistochemistry](#)
- [Immunofluorescence](#)
- [Immunoprecipitation](#)
- [Flow Cytometry](#)
- [Cell Culture](#)

### Mouse Scyl2 Antibody (Center) - Images



Mouse Scyl2 Antibody (Center) (Cat. #AP14165c) western blot analysis in NCI-H460 cell line lysates (35ug/lane). This demonstrates the Scyl2 antibody detected the Scyl2 protein (arrow).



Anti-Mouse Scyl2 Antibody (Center) at 1:1000 dilution + mouse heart lysate Lysates/proteins at 20 µg per lane. Secondary Goat Anti-Rabbit IgG, (H+L), Peroxidase conjugated at 1/10000 dilution. Predicted band size : 103 kDa Blocking/Dilution buffer: 5% NFDM/TBST.

#### **Mouse Scyl2 Antibody (Center) - Background**

Component of AP2-containing clathrin coated structures at the plasma membrane or of endocytic coated vesicles. Scyl2 may be a serine/threonine-protein kinase. May regulate clathrin-dependent trafficking between the TGN and/or the endosomal system (By similarity).

#### **Mouse Scyl2 Antibody (Center) - References**

Duwel, M., et al. Mol. Biol. Cell 17(10):4513-4525(2006)  
Zambrowicz, B.P., et al. Proc. Natl. Acad. Sci. U.S.A. 100(24):14109-14114(2003)  
Stryke, D., et al. Nucleic Acids Res. 31(1):278-281(2003)