

**NUP88 Antibody (C-term)**  
**Affinity Purified Rabbit Polyclonal Antibody (Pab)**  
**Catalog # AP14169b**

**Specification**

---

**NUP88 Antibody (C-term) - Product Information**

Application	WB,E
Primary Accession	<a href="#">O99567</a>
Other Accession	<a href="#">O08658</a> , <a href="#">Q8CEC0</a> , <a href="#">NP_002523.2</a>
Reactivity	Human
Predicted	Mouse, Rat
Host	Rabbit
Clonality	Polyclonal
Isotype	Rabbit IgG
Calculated MW	83542
Antigen Region	701-730

**NUP88 Antibody (C-term) - Additional Information**

**Gene ID** 4927

**Other Names**

Nuclear pore complex protein Nup88, 88 kDa nucleoporin, Nucleoporin Nup88, NUP88

**Target/Specificity**

This NUP88 antibody is generated from rabbits immunized with a KLH conjugated synthetic peptide between 701-730 amino acids from the C-terminal region of human NUP88.

**Dilution**

WB~~1:1000

E~~Use at an assay dependent concentration.

**Format**

Purified polyclonal antibody supplied in PBS with 0.09% (W/V) sodium azide. This antibody is purified through a protein A column, followed by peptide affinity purification.

**Storage**

Maintain refrigerated at 2-8°C for up to 2 weeks. For long term storage store at -20°C in small aliquots to prevent freeze-thaw cycles.

**Precautions**

NUP88 Antibody (C-term) is for research use only and not for use in diagnostic or therapeutic procedures.

**NUP88 Antibody (C-term) - Protein Information**

**Name** NUP88

**Function** Component of nuclear pore complex.

**Cellular Location**

Nucleus, nuclear pore complex

**Tissue Location**

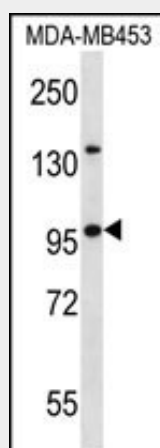
Ubiquitous.

**NUP88 Antibody (C-term) - Protocols**

Provided below are standard protocols that you may find useful for product applications.

- [Western Blot](#)
- [Blocking Peptides](#)
- [Dot Blot](#)
- [Immunohistochemistry](#)
- [Immunofluorescence](#)
- [Immunoprecipitation](#)
- [Flow Cytometry](#)
- [Cell Culture](#)

**NUP88 Antibody (C-term) - Images**



NUP88 Antibody (C-term) (Cat. #AP14169b) western blot analysis in MDA-MB453 cell line lysates (35ug/lane). This demonstrates the NUP88 antibody detected the NUP88 protein (arrow).

**NUP88 Antibody (C-term) - Background**

The nuclear pore complex is a massive structure that extends across the nuclear envelope, forming a gateway that regulates the flow of macromolecules between the nucleus and the cytoplasm. Nucleoporins, a family of 50 to 100 proteins, are the main components of the nuclear pore complex in eukaryotic cells. The protein encoded by this gene belongs to the nucleoporin family and is associated with the oncogenic nucleoporin CAN/Nup214 in a dynamic subcomplex. This protein is also overexpressed in a large number of malignant neoplasms and precancerous dysplasias.

**NUP88 Antibody (C-term) - References**

Hashizume, C., et al. Mol. Cancer 9, 119 (2010) :  
Brustmann, H., et al. Ann Diagn Pathol 13(5):303-307(2009)  
Cheng, Y.T., et al. Plant Cell 21(8):2503-2516(2009)  
Andres-Hernando, A., et al. J. Biol. Chem. 283(36):25082-25090(2008)  
Kodiha, M., et al. Biochim. Biophys. Acta 1783(3):405-418(2008)