

CHRD Antibody (C-term)
Affinity Purified Rabbit Polyclonal Antibody (Pab)
Catalog # AP1416b**Specification**

CHRD Antibody (C-term) - Product Information

Application	IHC-P, WB,E
Primary Accession	Q9H2X0
Reactivity	Human
Host	Rabbit
Clonality	Polyclonal
Isotype	Rabbit IgG
Calculated MW	102032
Antigen Region	926-955

CHRD Antibody (C-term) - Additional Information**Gene ID** 8646**Other Names**
Chordin, CHRD**Target/Specificity**

This CHRD antibody is generated from rabbits immunized with a KLH conjugated synthetic peptide between 926-955 amino acids from the C-terminal region of human CHRD.

Dilution

IHC-P~~1:10~50

WB~~1:1000

E~~Use at an assay dependent concentration.

Format

Purified polyclonal antibody supplied in PBS with 0.09% (W/V) sodium azide. This antibody is purified through a protein A column, followed by peptide affinity purification.

Storage

Maintain refrigerated at 2-8°C for up to 2 weeks. For long term storage store at -20°C in small aliquots to prevent freeze-thaw cycles.

Precautions

CHRD Antibody (C-term) is for research use only and not for use in diagnostic or therapeutic procedures.

CHRD Antibody (C-term) - Protein Information**Name** CHRD**Function** Dorsalizing factor. Key developmental protein that dorsalizes early vertebrate

embryonic tissues by binding to ventralizing TGF-beta family bone morphogenetic proteins (BMPs) and sequestering them in latent complexes (By similarity).

Cellular Location

Secreted.

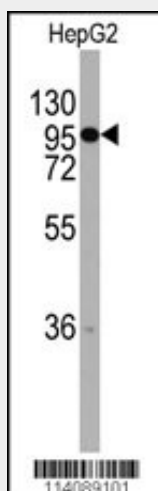
Tissue Location

Expressed at the highest level in liver.

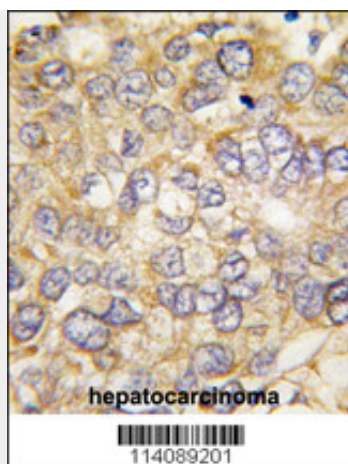
CHRD Antibody (C-term) - Protocols

Provided below are standard protocols that you may find useful for product applications.

- [Western Blot](#)
- [Blocking Peptides](#)
- [Dot Blot](#)
- [Immunohistochemistry](#)
- [Immunofluorescence](#)
- [Immunoprecipitation](#)
- [Flow Cytometry](#)
- [Cell Culture](#)

CHRD Antibody (C-term) - Images

Western blot analysis of anti-CHRD Antibody (C-term) (RB14089) in HepG2 cell line lysates (35ug/lane). CHRD (arrow) was detected using the purified Pab.



Formalin-fixed and paraffin-embedded human hepatocarcinoma tissue reacted with CHRD antibody (C-term) (Cat.#AP1416b), which was peroxidase-conjugated to the secondary antibody, followed by DAB staining. This data demonstrates the use of this antibody for immunohistochemistry; clinical relevance has not been evaluated.

CHRD Antibody (C-term) - Background

CHRD is a secreted protein that dorsalizes early vertebrate embryonic tissues by binding to ventralizing TGF-beta-like bone morphogenetic proteins and sequestering them in latent complexes. This protein may also have roles in organogenesis and during adulthood.

CHRD Antibody (C-term) - References

Lim,J., Cell 125 (4), 801-814 (2006)
Moll,F., FASEB J. 20 (2), 240-250 (2006)