

**MEF2D Antibody (Center)**  
**Affinity Purified Rabbit Polyclonal Antibody (Pab)**  
**Catalog # AP14178c**

**Specification**

---

**MEF2D Antibody (Center) - Product Information**

Application	WB,E
Primary Accession	<a href="#">Q14814</a>
Other Accession	<a href="#">NP_005911.1</a>
Reactivity	Human
Host	Rabbit
Clonality	Polyclonal
Isotype	Rabbit IgG
Calculated MW	55938
Antigen Region	251-279

**MEF2D Antibody (Center) - Additional Information**

**Gene ID** 4209

**Other Names**

Myocyte-specific enhancer factor 2D, MEF2D

**Target/Specificity**

This MEF2D antibody is generated from rabbits immunized with a KLH conjugated synthetic peptide between 251-279 amino acids from the Central region of human MEF2D.

**Dilution**

WB~~1:1000

E~~Use at an assay dependent concentration.

**Format**

Purified polyclonal antibody supplied in PBS with 0.09% (W/V) sodium azide. This antibody is purified through a protein A column, followed by peptide affinity purification.

**Storage**

Maintain refrigerated at 2-8°C for up to 2 weeks. For long term storage store at -20°C in small aliquots to prevent freeze-thaw cycles.

**Precautions**

MEF2D Antibody (Center) is for research use only and not for use in diagnostic or therapeutic procedures.

**MEF2D Antibody (Center) - Protein Information**

**Name** MEF2D

**Function** Transcriptional activator which binds specifically to the MEF2 element,

5'-YTA[AT](4)TAR-3', found in numerous muscle-specific, growth factor- and stress-induced genes. Mediates cellular functions not only in skeletal and cardiac muscle development, but also in neuronal differentiation and survival. Plays diverse roles in the control of cell growth, survival and apoptosis via p38 MAPK signaling in muscle-specific and/or growth factor-related transcription. Plays a critical role in the regulation of neuronal apoptosis (By similarity).

#### Cellular Location

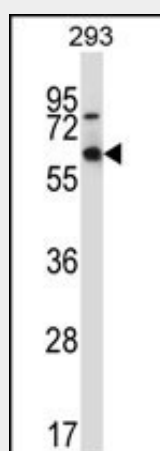
Nucleus {ECO:0000255|PROSITE-ProRule:PRU00251, ECO:0000269|PubMed:12691662, ECO:0000269|PubMed:15743823} Note=Translocated by HDAC4 to nuclear dots

#### MEF2D Antibody (Center) - Protocols

Provided below are standard protocols that you may find useful for product applications.

- [Western Blot](#)
- [Blocking Peptides](#)
- [Dot Blot](#)
- [Immunohistochemistry](#)
- [Immunofluorescence](#)
- [Immunoprecipitation](#)
- [Flow Cytometry](#)
- [Cell Culture](#)

#### MEF2D Antibody (Center) - Images



MEF2D Antibody (Center) (Cat. #AP14178c) western blot analysis in 293 cell line lysates (35ug/lane). This demonstrates the MEF2D antibody detected the MEF2D protein (arrow).

#### MEF2D Antibody (Center) - Background

MEF2D is a transcriptional activator which binds specifically to the MEF2 element, 5'-YTA[AT](4)TAR-3', found in numerous muscle-specific, growth factor- and stress-induced genes. Mediates cellular functions not only in skeletal and cardiac muscle development, but also in neuronal differentiation and survival. Plays diverse roles in the control of cell growth, survival and apoptosis via p38 MAPK signaling in muscle-specific and/or growth factor-related transcription. Plays a critical role in the regulation of neuronal apoptosis (By similarity).

#### MEF2D Antibody (Center) - References

Jablonski, K.A., et al. Diabetes 59(10):2672-2681(2010)

Bailey, S.D., et al. Diabetes Care 33(10):2250-2253(2010)  
Aude-Garcia, C., et al. Biochem. J. 430(2):237-244(2010)  
Czubryt, M.P., et al. J. Biol. Chem. 285(22):16942-16950(2010)  
Yoshida, T., et al. Int. J. Mol. Med. 25(4):649-656(2010)