

CIR Antibody (N-term)
Affinity Purified Rabbit Polyclonal Antibody (Pab)
Catalog # AP1417a

Specification

CIR Antibody (N-term) - Product Information

Application	WB,E
Primary Accession	Q86X95
Reactivity	Human
Host	Rabbit
Clonality	Polyclonal
Isotype	Rabbit IgG
Calculated MW	52313
Antigen Region	60-88

CIR Antibody (N-term) - Additional Information

Gene ID 9541

Other Names

Corepressor interacting with RBPJ 1, CBF1-interacting corepressor, Recepin, CIR1, CIR

Target/Specificity

This CIR antibody is generated from rabbits immunized with a KLH conjugated synthetic peptide between 60-88 amino acids from the N-terminal region of human CIR.

Dilution

WB~~1:1000

E~~Use at an assay dependent concentration.

Format

Purified polyclonal antibody supplied in PBS with 0.09% (W/V) sodium azide. This antibody is purified through a protein A column, followed by peptide affinity purification.

Storage

Maintain refrigerated at 2-8°C for up to 2 weeks. For long term storage store at -20°C in small aliquots to prevent freeze-thaw cycles.

Precautions

CIR Antibody (N-term) is for research use only and not for use in diagnostic or therapeutic procedures.

CIR Antibody (N-term) - Protein Information

Name CIRSR ([HGNC:24217](#))

Synonyms CIR, CIR1

Function May modulate splice site selection during alternative splicing of pre-mRNAs (By similarity). Regulates transcription and acts as corepressor for RBPJ. Recruits RBPJ to the Sin3-histone deacetylase complex (HDAC). Required for RBPJ-mediated repression of transcription.

Cellular Location

Nucleus speckle {ECO:0000250|UniProtKB:Q9DA19}. Cytoplasm, cytoskeleton, microtubule organizing center, centrosome. Note=Colocalizes with NEK6 in the centrosome.

Tissue Location

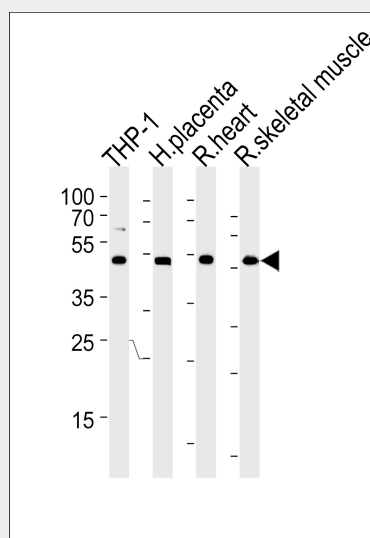
Highly expressed in heart, brain, placenta, liver, skeletal muscle and pancreas.

CIR Antibody (N-term) - Protocols

Provided below are standard protocols that you may find useful for product applications.

- [Western Blot](#)
- [Blocking Peptides](#)
- [Dot Blot](#)
- [Immunohistochemistry](#)
- [Immunofluorescence](#)
- [Immunoprecipitation](#)
- [Flow Cytometry](#)
- [Cell Culture](#)

CIR Antibody (N-term) - Images



CIR Antibody (N-term) (Cat.# AP1417a) western blot analysis in THP-1 cell line, human placenta, rat heart and skeletal muscle lysates (35ug/lane). This demonstrates the CIR antibody detected the CIR protein (arrow).

CIR Antibody (N-term) - Background

CIR may modulate splice site selection during alternative splicing of pre-mRNAs. It regulates transcription and acts as corepressor for RBPSUH. It recruits RBPSUH to the Sin3-histone deacetylase complex (HDAC) and is required for RBPSUH-mediated repression of transcription.

CIR Antibody (N-term) - References

Olsen,J.V., Cell 127 (3), 635-648 (2006)
Maita,H., Exp. Cell Res. 303 (2), 375-387 (2005)
Zhou,S., Mol. Cell. Biol. 21 (18), 6222-6232 (2001)