

ZDH16 Antibody (C-term)
Affinity Purified Rabbit Polyclonal Antibody (Pab)
Catalog # AP14199B**Specification**

ZDH16 Antibody (C-term) - Product Information

Application	WB,E
Primary Accession	O969W1
Other Accession	O9ESG8 , O4R7E2 , NP_932163.1 , NP_932162.1
Reactivity	Human
Predicted	Monkey, Mouse
Host	Rabbit
Clonality	Polyclonal
Isotype	Rabbit IgG
Calculated MW	43633
Antigen Region	286-314

ZDH16 Antibody (C-term) - Additional Information**Gene ID** 84287**Other Names**

Probable palmitoyltransferase ZDHHC16, Zinc finger DHHC domain-containing protein 16, DHHC-16, ZDHHC16

Target/Specificity

This ZDH16 antibody is generated from rabbits immunized with a KLH conjugated synthetic peptide between 286-314 amino acids from the C-terminal region of human ZDH16.

Dilution

WB~~1:1000

E~~Use at an assay dependent concentration.

Format

Purified polyclonal antibody supplied in PBS with 0.09% (W/V) sodium azide. This antibody is purified through a protein A column, followed by peptide affinity purification.

Storage

Maintain refrigerated at 2-8°C for up to 2 weeks. For long term storage store at -20°C in small aliquots to prevent freeze-thaw cycles.

Precautions

ZDH16 Antibody (C-term) is for research use only and not for use in diagnostic or therapeutic procedures.

ZDH16 Antibody (C-term) - Protein Information**Name** ZDHHC16 ([HGNC:20714](#))

Function Palmitoyl acyltransferase that mediates palmitoylation of proteins such as PLN and ZDHHC6 (PubMed:[28826475](#)). Required during embryonic heart development and cardiac function, possibly by mediating palmitoylation of PLN, thereby affecting PLN phosphorylation and homooligomerization (By similarity). Also required for eye development (By similarity). Palmitoylates ZDHHC6, affecting the quaternary assembly of ZDHHC6, its localization, stability and function (PubMed:[28826475](#)). May play a role in DNA damage response (By similarity). May be involved in apoptosis regulation (By similarity). Involved in the proliferation of neural stem cells by regulating the FGF/ERK pathway (By similarity).

Cellular Location

Endoplasmic reticulum membrane; Multi-pass membrane protein
{ECO:0000250|UniProtKB:Q9ESG8}

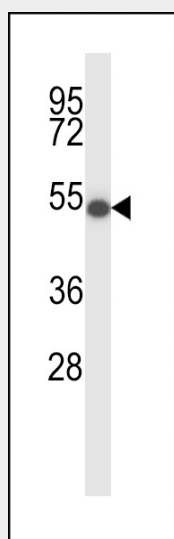
Tissue Location

Widely expressed..

ZDH16 Antibody (C-term) - Protocols

Provided below are standard protocols that you may find useful for product applications.

- [Western Blot](#)
- [Blocking Peptides](#)
- [Dot Blot](#)
- [Immunohistochemistry](#)
- [Immunofluorescence](#)
- [Immunoprecipitation](#)
- [Flow Cytometry](#)
- [Cell Culture](#)

ZDH16 Antibody (C-term) - Images

ZDH16 Antibody (C-term) (Cat. #AP14199b) western blot analysis in T47D cell line lysates (35ug/lane). This demonstrates the ZDH16 antibody detected the ZDH16 protein (arrow).

ZDH16 Antibody (C-term) - Background

ZDH16 may be involved in apoptosis regulation (By similarity).

ZDH16 Antibody (C-term) - References

Lamesch, P., et al. Genomics 89(3):307-315(2007)
Zhang, F., et al. Biochim. Biophys. Acta 1759 (11-12), 514-525 (2006) :
Grupe, A., et al. Am. J. Hum. Genet. 78(1):78-88(2006)
Deloukas, P., et al. Nature 429(6990):375-381(2004)
Clark, H.F., et al. Genome Res. 13(10):2265-2270(2003)