

PSCA Antibody (Center)
Purified Rabbit Polyclonal Antibody (Pab)
Catalog # AP1419c

Specification

PSCA Antibody (Center) - Product Information

Application	WB, IHC-P,E
Primary Accession	O43653
Reactivity	Human, Mouse
Host	Rabbit
Clonality	Polyclonal
Isotype	Rabbit IgG
Antigen Region	56-85

PSCA Antibody (Center) - Additional Information

Gene ID 8000

Other Names

Prostate stem cell antigen, PSCA

Target/Specificity

This PSCA antibody is generated from rabbits immunized with a KLH conjugated synthetic peptide between 56-85 amino acids from the Central region of human PSCA.

Dilution

WB~~1:1000-1:2000

IHC-P~~1:10~50

E~~Use at an assay dependent concentration.

Format

Purified polyclonal antibody supplied in PBS with 0.09% (W/V) sodium azide. This antibody is purified through a protein A column, followed by peptide affinity purification.

Storage

Maintain refrigerated at 2-8°C for up to 2 weeks. For long term storage store at -20°C in small aliquots to prevent freeze-thaw cycles.

Precautions

PSCA Antibody (Center) is for research use only and not for use in diagnostic or therapeutic procedures.

PSCA Antibody (Center) - Protein Information

Name PSCA

Function May be involved in the regulation of cell proliferation. Has a cell-proliferation inhibition activity in vitro.

Cellular Location

Cell membrane; Lipid-anchor, GPI-anchor

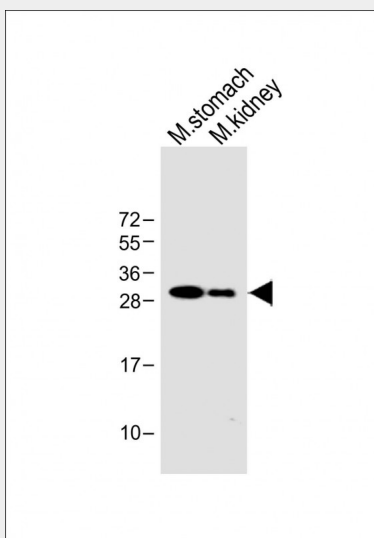
Tissue Location

Highly expressed in prostate (basal, secretory and neuroendocrine epithelium cells). Also found in bladder (transitional epithelium), placenta (trophoblasts), stomach (neuroendocrine cells), colon (neuroendocrine cells) and kidney (collecting ducts) Overexpressed in prostate cancers and expression is correlated with tumor stage, grade and androgen-independence. Highly expressed in prostate cancer bone metastases. Expressed in gastric epithelial cells, mainly in the isthmus (at protein level). Not detected in normal intestinal epithelium (at protein level). Expressed in brain cortex; expression is significantly increased in the front cortex of Alzheimer disease patients.

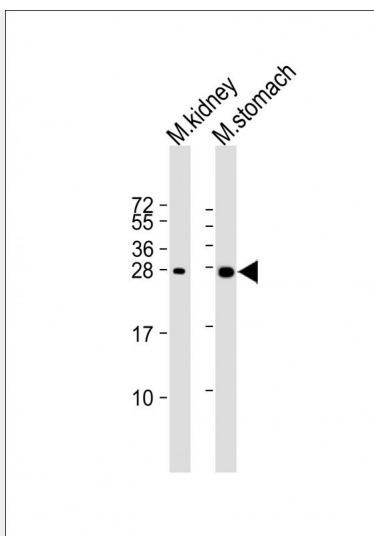
PSCA Antibody (Center) - Protocols

Provided below are standard protocols that you may find useful for product applications.

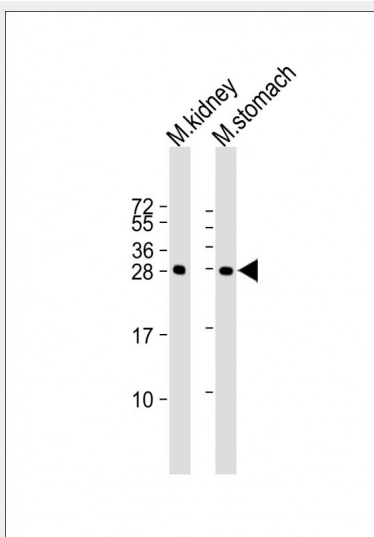
- [Western Blot](#)
- [Blocking Peptides](#)
- [Dot Blot](#)
- [Immunohistochemistry](#)
- [Immunofluorescence](#)
- [Immunoprecipitation](#)
- [Flow Cytometry](#)
- [Cell Culture](#)

PSCA Antibody (Center) - Images

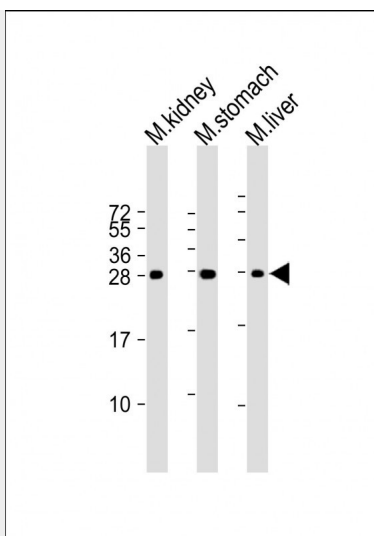
All lanes : Anti-PSCA Antibody (Center) at 1:1000 dilution Lane 1: mouse stomach lysate Lane 2: mouse kidney lysate Lysates/proteins at 20 µg per lane. Secondary Goat Anti-Rabbit IgG, (H+L), Peroxidase conjugated at 1/10000 dilution. Predicted band size : 28 kDa Blocking/Dilution buffer: 5% NFD/MTBST.



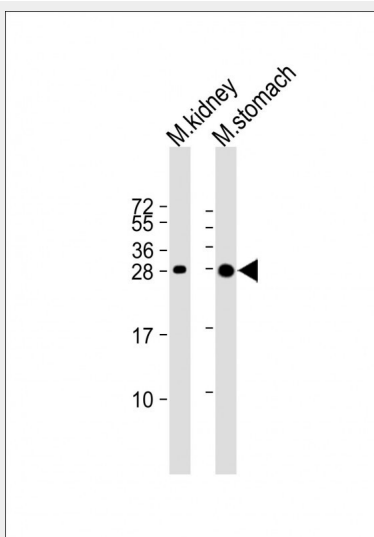
All lanes : Anti-PSCA Antibody (Center) at 1:2000 dilution Lane 1: Mouse kidney lysate Lane 2: Mouse stomach lysate Lysates/proteins at 20 μ g per lane. Secondary Goat Anti-Rabbit IgG, (H+L), Peroxidase conjugated at 1/10000 dilution. Predicted band size : 12 kDa Blocking/Dilution buffer: 5% NFDM/TBST.



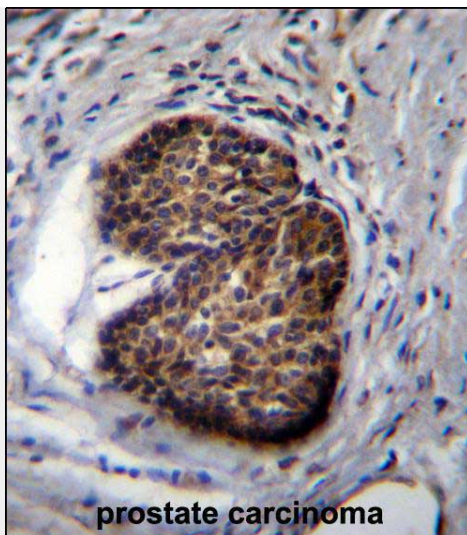
All lanes : Anti-PSCA Antibody (Center) at 1:2000 dilution Lane 1: Mouse kidney lysate Lane 2: Mouse stomach lysate Lysates/proteins at 20 μ g per lane. Secondary Goat Anti-Rabbit IgG, (H+L), Peroxidase conjugated at 1/10000 dilution. Predicted band size : 12 kDa Blocking/Dilution buffer: 5% NFDM/TBST.



All lanes : Anti-PSCA Antibody (Center) at 1:1000-1:2000 dilution Lane 1: Mouse kidney lysate
Lane 2: Mouse stomach lysate Lane 3: Mouse liver lysate Lysates/proteins at 20 µg per lane.
Secondary Goat Anti-Rabbit IgG, (H+L), Peroxidase conjugated at 1/10000 dilution. Predicted band size : 12 kDa Blocking/Dilution buffer: 5% NFDM/TBST.



All lanes : Anti-PSCA Antibody (Center) at 1:1000-1:2000 dilution Lane 1: Mouse kidney lysate
Lane 2: Mouse stomach lysate Lysates/proteins at 20 µg per lane. Secondary Goat Anti-Rabbit IgG,
(H+L), Peroxidase conjugated at 1/10000 dilution. Predicted band size : 12 kDa Blocking/Dilution
buffer: 5% NFDM/TBST.



PSCA Antibody (Center) (Cat. #AP1419c) immunohistochemistry analysis in formalin fixed and paraffin embedded human prostate carcinoma followed by peroxidase conjugation of the secondary antibody and DAB staining. This data demonstrates the use of PSCA Antibody (Center) for immunohistochemistry. Clinical relevance has not been evaluated.

PSCA Antibody (Center) - Background

PSCA is a glycosylphosphatidylinositol-anchored cell membrane glycoprotein. In addition to being highly expressed in the prostate it is also expressed in the bladder, placenta, colon, kidney, and stomach. It is up-regulated in a large proportion of prostate cancers and is also detected in cancers of the bladder and pancreas.

PSCA Antibody (Center) - References

Zhigang, Z., Prostate 68 (2), 190-199 (2008)
Zhigang, Z., Prostate 67 (11), 1143-1151 (2007)