

CYTH1 Antibody (N-term)
Affinity Purified Rabbit Polyclonal Antibody (Pab)
Catalog # AP14202a**Specification**

CYTH1 Antibody (N-term) - Product Information

Application	WB,E
Primary Accession	Q15438
Other Accession	P97694 , Q9QX11 , NP_004753.1 , NP_059430.2
Reactivity	Human
Predicted	Mouse, Rat
Host	Rabbit
Clonality	Polyclonal
Isotype	Rabbit IgG
Calculated MW	46413
Antigen Region	37-65

CYTH1 Antibody (N-term) - Additional Information**Gene ID** 9267**Other Names**

Cytohesin-1, PH, SEC7 and coiled-coil domain-containing protein 1, SEC7 homolog B2-1, CYTH1, D17S811E, PSCD1

Target/Specificity

This CYTH1 antibody is generated from rabbits immunized with a KLH conjugated synthetic peptide between 37-65 amino acids from the N-terminal region of human CYTH1.

Dilution

WB~~1:1000

Format

Purified polyclonal antibody supplied in PBS with 0.09% (W/V) sodium azide. This antibody is purified through a protein A column, followed by peptide affinity purification.

Storage

Maintain refrigerated at 2-8°C for up to 2 weeks. For long term storage store at -20°C in small aliquots to prevent freeze-thaw cycles.

Precautions

CYTH1 Antibody (N-term) is for research use only and not for use in diagnostic or therapeutic procedures.

CYTH1 Antibody (N-term) - Protein Information**Name** CYTH1 ([HGNC:9501](#))

Synonyms D17S811E, PSCD1

Function Promotes guanine-nucleotide exchange on ARF1, ARF5 and ARF6. Promotes the activation of ARF factors through replacement of GDP with GTP. Plays an important role in membrane trafficking, during junctional remodeling and epithelial polarization, through regulation of ARF6 activity.

Cellular Location

Cell membrane; Peripheral membrane protein. Cytoplasm, cytosol
{ECO:0000250|UniProtKB:Q9QX11}. Cell junction, tight junction
{ECO:0000250|UniProtKB:Q9QX11}. Cell junction, adherens junction
{ECO:0000250|UniProtKB:Q9QX11}. Note=Colocalized with TJP1 during epithelial polarization.
{ECO:0000250|UniProtKB:Q9QX11}

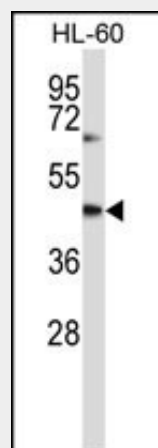
Tissue Location

Ubiquitous.

CYTH1 Antibody (N-term) - Protocols

Provided below are standard protocols that you may find useful for product applications.

- [Western Blot](#)
- [Blocking Peptides](#)
- [Dot Blot](#)
- [Immunohistochemistry](#)
- [Immunofluorescence](#)
- [Immunoprecipitation](#)
- [Flow Cytometry](#)
- [Cell Culture](#)

CYTH1 Antibody (N-term) - Images

CYTH1 Antibody (N-term) (Cat. #AP14202a) western blot analysis in HL-60 cell line lysates (35ug/lane). This demonstrates the CYTH1 antibody detected the CYTH1 protein (arrow).

CYTH1 Antibody (N-term) - Background

The protein encoded by this gene is a member of the PSCD family. Members of this family have identical structural organization that consists of an N-terminal coiled-coil motif, a

central Sec7 domain, and a C-terminal pleckstrin homology (PH) domain. The coiled-coil motif is involved in homodimerization, the Sec7 domain contains guanine-nucleotide exchange protein (GEP) activity, and the PH domain interacts with phospholipids and is responsible for association of PSCDs with membranes. Members of this family appear to mediate the regulation of protein sorting and membrane trafficking. This gene is highly expressed in natural killer and peripheral T cells, and regulates the adhesiveness of integrins at the plasma membrane of lymphocytes. The encoded protein is 83% homologous to that of CYTH2.

CYTH1 Antibody (N-term) - References

El Azreq, M.A., et al. J. Immunol. 184(2):637-649(2010)
Quast, T., et al. Blood 113(23):5801-5810(2009)
Sendide, K., et al. J. Immunol. 174(7):4210-4219(2005)
Boehm, T., et al. EMBO J. 22(5):1014-1024(2003)
Mansour, M., et al. J. Biol. Chem. 277(35):32302-32309(2002)