

**MATR3 Antibody (N-term)**  
**Affinity Purified Rabbit Polyclonal Antibody (Pab)**  
**Catalog # AP14206a****Specification**

---

**MATR3 Antibody (N-term) - Product Information**

Application	WB,E
Primary Accession	<a href="#">P43243</a>
Other Accession	<a href="#">P43244</a> , <a href="#">Q8K310</a> , <a href="#">NP_954659.1</a> , <a href="#">NP_001181883.1</a>
Reactivity	Human
Predicted	Mouse, Rat
Host	Rabbit
Clonality	Polyclonal
Isotype	Rabbit IgG
Calculated MW	94623
Antigen Region	157-186

**MATR3 Antibody (N-term) - Additional Information****Gene ID** 9782**Other Names**

Matrin-3, MATR3, KIAA0723

**Target/Specificity**

This MATR3 antibody is generated from rabbits immunized with a KLH conjugated synthetic peptide between 157-186 amino acids from the N-terminal region of human MATR3.

**Dilution**

WB~~1:1000

E~~Use at an assay dependent concentration.

**Format**

Purified polyclonal antibody supplied in PBS with 0.09% (W/V) sodium azide. This antibody is purified through a protein A column, followed by peptide affinity purification.

**Storage**

Maintain refrigerated at 2-8°C for up to 2 weeks. For long term storage store at -20°C in small aliquots to prevent freeze-thaw cycles.

**Precautions**

MATR3 Antibody (N-term) is for research use only and not for use in diagnostic or therapeutic procedures.

**MATR3 Antibody (N-term) - Protein Information****Name** MATR3

**Synonyms** KIAA0723

**Function** May play a role in transcription or may interact with other nuclear matrix proteins to form the internal fibrogranular network. In association with the SFPQ-NONO heteromer may play a role in nuclear retention of defective RNAs. Plays a role in the regulation of DNA virus-mediated innate immune response by assembling into the HDP-RNP complex, a complex that serves as a platform for IRF3 phosphorylation and subsequent innate immune response activation through the cGAS-STING pathway (PubMed:[28712728](#)). Binds to N6-methyladenosine (m6A)-containing mRNAs and contributes to MYC stability by binding to m6A-containing MYC mRNAs (PubMed:[32245947](#)). May bind to specific miRNA hairpins (PubMed:[28431233](#)).

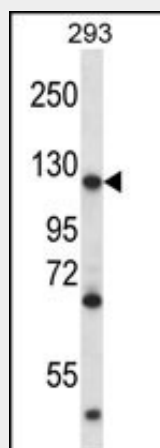
**Cellular Location**

Nucleus matrix.

**MATR3 Antibody (N-term) - Protocols**

Provided below are standard protocols that you may find useful for product applications.

- [Western Blot](#)
- [Blocking Peptides](#)
- [Dot Blot](#)
- [Immunohistochemistry](#)
- [Immunofluorescence](#)
- [Immunoprecipitation](#)
- [Flow Cytometry](#)
- [Cell Culture](#)

**MATR3 Antibody (N-term) - Images**

MATR3 Antibody (N-term) (Cat. #AP14206a) western blot analysis in 293 cell line lysates (35ug/lane). This demonstrates the MATR3 antibody detected the MATR3 protein (arrow).

**MATR3 Antibody (N-term) - Background**

This locus encodes a nuclear matrix protein. Mutations at this locus have been associated with distal myopathy 2, which often includes vocal cord and pharyngeal weakness. Alternatively spliced transcript variants, including read-through transcripts with an upstream locus have been described. Related pseudogenes have been defined on chr1 and chrX.

**MATR3 Antibody (N-term) - References**

Zeitz, M.J., et al. J. Cell. Biochem. 108(1):125-133(2009)  
Senderek, J., et al. Am. J. Hum. Genet. 84(4):511-518(2009)  
Graubert, T.A., et al. PLoS ONE 4 (2), E4583 (2009) :  
Malyavantham, K.S., et al. J. Cell. Biochem. 105(2):391-403(2008)  
Sugiyama, N., et al. Mol. Cell Proteomics 6(6):1103-1109(2007)