

PRSS8 Antibody (Center)
Affinity Purified Rabbit Polyclonal Antibody (Pab)
Catalog # AP14207c**Specification**

PRSS8 Antibody (Center) - Product Information

Application	WB,E
Primary Accession	Q16651
Other Accession	NP_002764.1
Reactivity	Human
Host	Rabbit
Clonality	Polyclonal
Isotype	Rabbit IgG
Calculated MW	36431
Antigen Region	190-219

PRSS8 Antibody (Center) - Additional Information**Gene ID** 5652**Other Names**

Prostasin, 3421-, Channel-activating protease 1, CAP1, Serine protease 8, Prostasin light chain, Prostasin heavy chain, PRSS8

Target/Specificity

This PRSS8 antibody is generated from rabbits immunized with a KLH conjugated synthetic peptide between 190-219 amino acids from the Central region of human PRSS8.

Dilution

WB~~1:1000

E~~Use at an assay dependent concentration.

Format

Purified polyclonal antibody supplied in PBS with 0.09% (W/V) sodium azide. This antibody is purified through a protein A column, followed by peptide affinity purification.

Storage

Maintain refrigerated at 2-8°C for up to 2 weeks. For long term storage store at -20°C in small aliquots to prevent freeze-thaw cycles.

Precautions

PRSS8 Antibody (Center) is for research use only and not for use in diagnostic or therapeutic procedures.

PRSS8 Antibody (Center) - Protein Information**Name** PRSS8

Function Possesses a trypsin-like cleavage specificity with a preference for poly-basic substrates. Stimulates epithelial sodium channel (ENaC) activity through activating cleavage of the gamma subunits (SCNN1G).

Cellular Location

[Prostasin]: Cell membrane; Single-pass membrane protein [Prostasin heavy chain]: Secreted, extracellular space. Note=Found in the seminal fluid. Secreted after cleavage of its C-terminus

Tissue Location

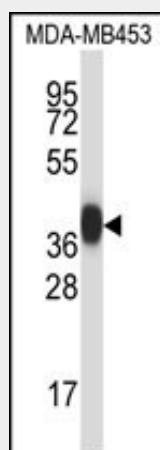
Found in prostate, liver, salivary gland, kidney, lung, pancreas, colon, bronchus and renal proximal tubular cells. In the prostate gland it may be synthesized in epithelial cells, secreted into the ducts, and excreted into the seminal fluid

PRSS8 Antibody (Center) - Protocols

Provided below are standard protocols that you may find useful for product applications.

- [Western Blot](#)
- [Blocking Peptides](#)
- [Dot Blot](#)
- [Immunohistochemistry](#)
- [Immunofluorescence](#)
- [Immunoprecipitation](#)
- [Flow Cytometry](#)
- [Cell Culture](#)

PRSS8 Antibody (Center) - Images



PRSS8 Antibody (Center) (Cat. #AP14207c) western blot analysis in MDA-MB453 cell line lysates (35ug/lane). This demonstrates the PRSS8 antibody detected the PRSS8 protein (arrow).

PRSS8 Antibody (Center) - Background

This gene encodes a trypsinogen, which is a member of the trypsin family of serine proteases. This enzyme is highly expressed in prostate epithelia and is one of several proteolytic enzymes found in seminal fluid. The proprotein is cleaved to produce a light chain and a heavy chain which are associated by a disulfide bond. It is active on peptide linkages involving the carboxyl group of lysine or arginine.

PRSS8 Antibody (Center) - References

Chen, Y.W., et al. J. Biol. Chem. 285(41):31755-31762(2010)
Chen, M., et al. Mol. Cell. Biochem. 337 (1-2), 259-266 (2010) :
Fu, Y.Y., et al. Hum. Reprod. 25(3):623-632(2010)
Ko, T., et al. J. Biomed. Biotechnol. 2010, 793843 (2010) :
Chang, J.H., et al. Zhongguo Yi Xue Ke Xue Yuan Xue Bao 31(6):712-719(2009)