

D19L4 Antibody (N-term)
Affinity Purified Rabbit Polyclonal Antibody (Pab)
Catalog # AP14213A**Specification**

D19L4 Antibody (N-term) - Product Information

Application	IHC-P, WB,E
Primary Accession	Q7Z388
Other Accession	NP_861452.2
Reactivity	Human
Host	Rabbit
Clonality	Polyclonal
Isotype	Rabbit IgG
Calculated MW	83756
Antigen Region	1-30

D19L4 Antibody (N-term) - Additional Information**Gene ID** 286148**Other Names**

Probable C-mannosyltransferase DPY19L4, 241-, Dpy-19-like protein 4, Protein dpy-19 homolog 4, DPY19L4

Target/Specificity

This D19L4 antibody is generated from rabbits immunized with a KLH conjugated synthetic peptide between 1-30 amino acids from the N-terminal region of human D19L4.

Dilution

IHC-P~~1:10~50

WB~~1:1000

E~~Use at an assay dependent concentration.

Format

Purified polyclonal antibody supplied in PBS with 0.09% (W/V) sodium azide. This antibody is purified through a protein A column, followed by peptide affinity purification.

Storage

Maintain refrigerated at 2-8°C for up to 2 weeks. For long term storage store at -20°C in small aliquots to prevent freeze-thaw cycles.

Precautions

D19L4 Antibody (N-term) is for research use only and not for use in diagnostic or therapeutic procedures.

D19L4 Antibody (N-term) - Protein Information**Name** DPY19L4

Function Probable C-mannosyltransferase that mediates C-mannosylation of tryptophan residues on target proteins.

Cellular Location

Membrane; Multi-pass membrane protein

Tissue Location

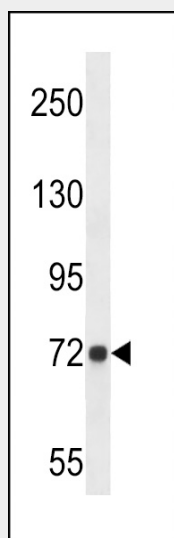
Widely expressed..

D19L4 Antibody (N-term) - Protocols

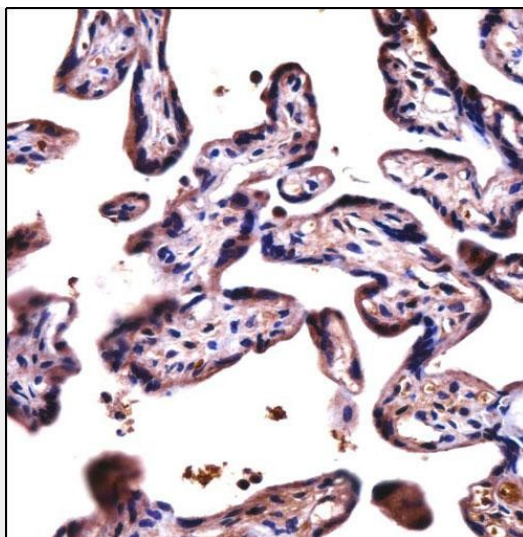
Provided below are standard protocols that you may find useful for product applications.

- [Western Blot](#)
- [Blocking Peptides](#)
- [Dot Blot](#)
- [Immunohistochemistry](#)
- [Immunofluorescence](#)
- [Immunoprecipitation](#)
- [Flow Cytometry](#)
- [Cell Culture](#)

D19L4 Antibody (N-term) - Images



D19L4 Antibody (N-term) (Cat. #AP14213a) western blot analysis in A549 cell line lysates (35ug/lane). This demonstrates the D19L4 antibody detected the D19L4 protein (arrow).



D19L4 Antibody (N-term) (AP14213a) immunohistochemistry analysis in formalin fixed and paraffin embedded human placenta tissue followed by peroxidase conjugation of the secondary antibody and DAB staining. This data demonstrates the use of D19L4 Antibody (N-term) for immunohistochemistry. Clinical relevance has not been evaluated.

D19L4 Antibody (N-term) - Background

The function of this protein remains unknown.

D19L4 Antibody (N-term) - References

Tsuritani, K., et al. Genome Res. 17(7):1005-1014(2007)