

**TOM1L1 Antibody (C-term)**  
**Affinity Purified Rabbit Polyclonal Antibody (Pab)**  
**Catalog # AP14233b****Specification**

---

**TOM1L1 Antibody (C-term) - Product Information**

Application	WB,E
Primary Accession	<a href="#">O75674</a>
Other Accession	<a href="#">NP_005477.2</a>
Reactivity	Human
Host	Rabbit
Clonality	Polyclonal
Isotype	Rabbit IgG
Calculated MW	52989
Antigen Region	445-474

**TOM1L1 Antibody (C-term) - Additional Information****Gene ID** 10040**Other Names**

TOM1-like protein 1, Src-activating and signaling molecule protein, Target of Myb-like protein 1, TOM1L1, SRCASM

**Target/Specificity**

This TOM1L1 antibody is generated from rabbits immunized with a KLH conjugated synthetic peptide between 445-474 amino acids from the C-terminal region of human TOM1L1.

**Dilution**

WB~~1:1000

E~~Use at an assay dependent concentration.

**Format**

Purified polyclonal antibody supplied in PBS with 0.09% (W/V) sodium azide. This antibody is purified through a protein A column, followed by peptide affinity purification.

**Storage**

Maintain refrigerated at 2-8°C for up to 2 weeks. For long term storage store at -20°C in small aliquots to prevent freeze-thaw cycles.

**Precautions**

TOM1L1 Antibody (C-term) is for research use only and not for use in diagnostic or therapeutic procedures.

**TOM1L1 Antibody (C-term) - Protein Information****Name** TOM1L1

**Synonyms** SRCASM

**Function** Probable adapter protein involved in signaling pathways. Interacts with the SH2 and SH3 domains of various signaling proteins when it is phosphorylated. May promote FYN activation, possibly by disrupting intramolecular SH3-dependent interactions (By similarity).

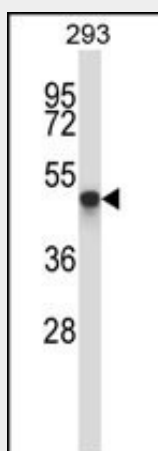
**Cellular Location**

Golgi apparatus, Golgi stack. Endosome membrane. Cytoplasm. Membrane; Peripheral membrane protein; Cytoplasmic side. Note=A small proportion is membrane-associated

**TOM1L1 Antibody (C-term) - Protocols**

Provided below are standard protocols that you may find useful for product applications.

- [Western Blot](#)
- [Blocking Peptides](#)
- [Dot Blot](#)
- [Immunohistochemistry](#)
- [Immunofluorescence](#)
- [Immunoprecipitation](#)
- [Flow Cytometry](#)
- [Cell Culture](#)

**TOM1L1 Antibody (C-term) - Images**

TOM1L1 Antibody (C-term) (Cat. #AP14233b) western blot analysis in 293 cell line lysates (35ug/lane). This demonstrates the TOM1L1 antibody detected the TOM1L1 protein (arrow).

**TOM1L1 Antibody (C-term) - Background**

Probable adapter protein involved in signaling pathways. Interacts with the SH2 and SH3 domains of various signaling proteins when it is phosphorylated. May promotes FYN activation, possibly by disrupting intramolecular SH3-dependent interactions (By similarity).

**TOM1L1 Antibody (C-term) - References**

Qi, Y., et al. Anticancer Res. 30(9):3535-3539(2010)  
Liu, N.S., et al. EMBO J. 28(22):3485-3499(2009)  
Meulener, M.C., et al. J. Cutan. Pathol. 36(3):291-295(2009)  
Elmarghani, A., et al. Mediators Inflamm. 2009, 416298 (2009) :

Thalappilly, S., et al. Proteomics 8(15):3071-3081(2008)