

DPYSL3 Antibody (C-term)
Affinity Purified Rabbit Polyclonal Antibody (Pab)
Catalog # AP14234b**Specification**

DPYSL3 Antibody (C-term) - Product Information

Application	IHC-P, WB,E
Primary Accession	Q14195
Other Accession	Q62952 , Q62188 , NP_001378.1
Reactivity	Human
Predicted	Mouse, Rat
Host	Rabbit
Clonality	Polyclonal
Isotype	Rabbit IgG
Calculated MW	61963
Antigen Region	461-490

DPYSL3 Antibody (C-term) - Additional Information**Gene ID** 1809**Other Names**

Dihydropyrimidinase-related protein 3, DRP-3, Collapsin response mediator protein 4, CRMP-4, Unc-33-like phosphoprotein 1, ULIP-1, DPYSL3, CRMP4, DRP3, ULIP, ULIP1

Target/Specificity

This DPYSL3 antibody is generated from rabbits immunized with a KLH conjugated synthetic peptide between 461-490 amino acids from the C-terminal region of human DPYSL3.

Dilution

IHC-P~~1:10~50

WB~~1:1000

E~~Use at an assay dependent concentration.

Format

Purified polyclonal antibody supplied in PBS with 0.09% (W/V) sodium azide. This antibody is purified through a protein A column, followed by peptide affinity purification.

Storage

Maintain refrigerated at 2-8°C for up to 2 weeks. For long term storage store at -20°C in small aliquots to prevent freeze-thaw cycles.

Precautions

DPYSL3 Antibody (C-term) is for research use only and not for use in diagnostic or therapeutic procedures.

DPYSL3 Antibody (C-term) - Protein Information

Name DPYSL3

Synonyms CRMP4, DRP3, ULIP, ULIP1

Function Necessary for signaling by class 3 semaphorins and subsequent remodeling of the cytoskeleton. Plays a role in axon guidance, neuronal growth cone collapse and cell migration (By similarity).

Cellular Location

Cytoplasm. Cell projection, growth cone. Note=Colocalizes with synaptic vesicle protein 2 in the central region of the growth cone.

Tissue Location

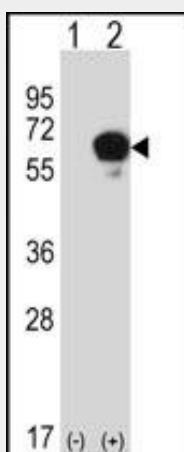
Mainly expressed in heart and skeletal muscle. Also strongly expressed in fetal brain and spinal cord

DPYSL3 Antibody (C-term) - Protocols

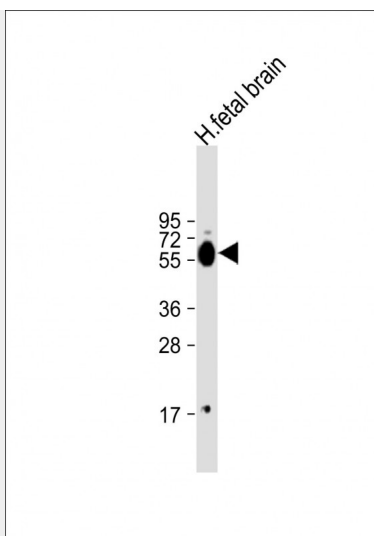
Provided below are standard protocols that you may find useful for product applications.

- [Western Blot](#)
- [Blocking Peptides](#)
- [Dot Blot](#)
- [Immunohistochemistry](#)
- [Immunofluorescence](#)
- [Immunoprecipitation](#)
- [Flow Cytometry](#)
- [Cell Culture](#)

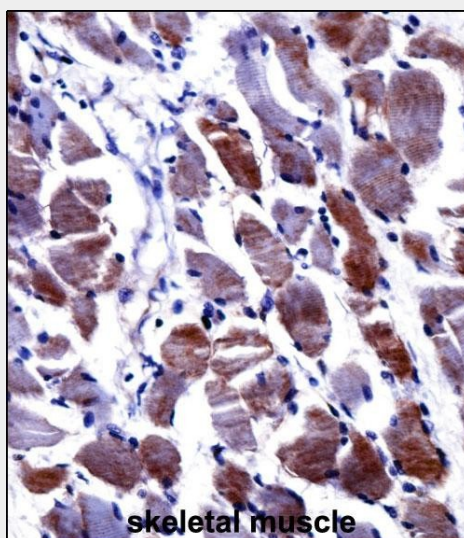
DPYSL3 Antibody (C-term) - Images



Western blot analysis of DPYSL3 (arrow) using rabbit polyclonal DPYSL3 Antibody (C-term) (Cat. #AP14234b). 293 cell lysates (2 ug/lane) either nontransfected (Lane 1) or transiently transfected (Lane 2) with the DPYSL3 gene.



Anti-DPYSL3 Antibody (C-term) at 1:1000 dilution + human fetal brain lysate Lysates/proteins at 20 µg per lane. Secondary Goat Anti-Rabbit IgG, (H+L), Peroxidase conjugated at 1/10000 dilution. Predicted band size : 62 kDa Blocking/Dilution buffer: 5% NFDM/TBST.



DPYSL3 Antibody (C-term) (AP14234b) immunohistochemistry analysis in formalin fixed and paraffin embedded human skeletal muscle followed by peroxidase conjugation of the secondary antibody and DAB staining. This data demonstrates the use of DPYSL3 Antibody (C-term) for immunohistochemistry. Clinical relevance has not been evaluated.

DPYSL3 Antibody (C-term) - Background

Necessary for signaling by class 3 semaphorins and subsequent remodeling of the cytoskeleton. Plays a role in axon guidance, neuronal growth cone collapse and cell migration (By similarity).

DPYSL3 Antibody (C-term) - References

- Okita, K., et al. Cancer Sci. 101(11):2333-2340(2010)
- Gao, X., et al. Oncogene 29(32):4555-4566(2010)
- Rose, J.E., et al. Mol. Med. 16 (7-8), 247-253 (2010) :
- Sugiyama, N., et al. Mol. Cell Proteomics 6(6):1103-1109(2007)
- Olsen, J.V., et al. Cell 127(3):635-648(2006)