

L3MBTL2 Antibody (C-term)
Affinity Purified Rabbit Polyclonal Antibody (Pab)
Catalog # AP14235b

Specification

L3MBTL2 Antibody (C-term) - Product Information

Application	WB,E
Primary Accession	O969R5
Other Accession	NP_113676.2
Reactivity	Human
Host	Rabbit
Clonality	Polyclonal
Isotype	Rabbit IgG
Calculated MW	79110
Antigen Region	627-656

L3MBTL2 Antibody (C-term) - Additional Information

Gene ID 83746

Other Names

Lethal(3)malignant brain tumor-like protein 2, H-l(3)mbt-like protein 2, L(3)mbt-like protein 2, L3MBTL2

Target/Specificity

This L3MBTL2 antibody is generated from rabbits immunized with a KLH conjugated synthetic peptide between 627-656 amino acids from the C-terminal region of human L3MBTL2.

Dilution

WB~~1:1000

E~~Use at an assay dependent concentration.

Format

Purified polyclonal antibody supplied in PBS with 0.09% (W/V) sodium azide. This antibody is purified through a protein A column, followed by peptide affinity purification.

Storage

Maintain refrigerated at 2-8°C for up to 2 weeks. For long term storage store at -20°C in small aliquots to prevent freeze-thaw cycles.

Precautions

L3MBTL2 Antibody (C-term) is for research use only and not for use in diagnostic or therapeutic procedures.

L3MBTL2 Antibody (C-term) - Protein Information

Name L3MBTL2

Function Putative Polycomb group (PcG) protein. PcG proteins maintain the transcriptionally repressive state of genes, probably via a modification of chromatin, rendering it heritably changed in its expressibility. Its association with a chromatin-remodeling complex suggests that it may contribute to prevent expression of genes that trigger the cell into mitosis. Binds to monomethylated and dimethylated 'Lys-20' on histone H4. Binds histone H3 peptides that are monomethylated or dimethylated on 'Lys-4', 'Lys-9' or 'Lys-27'.

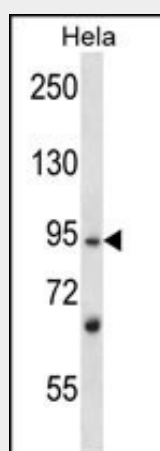
Cellular Location

Nucleus.

L3MBTL2 Antibody (C-term) - Protocols

Provided below are standard protocols that you may find useful for product applications.

- [Western Blot](#)
- [Blocking Peptides](#)
- [Dot Blot](#)
- [Immunohistochemistry](#)
- [Immunofluorescence](#)
- [Immunoprecipitation](#)
- [Flow Cytometry](#)
- [Cell Culture](#)

L3MBTL2 Antibody (C-term) - Images

L3MBTL2 Antibody (C-term) (Cat. #AP14235b) western blot analysis in HeLa cell line lysates (35ug/lane). This demonstrates the L3MBTL2 antibody detected the L3MBTL2 protein (arrow).

L3MBTL2 Antibody (C-term) - Background

Putative Polycomb group (PcG) protein. PcG proteins maintain the transcriptionally repressive state of genes, probably via a modification of chromatin, rendering it heritably changed in its expressibility. Its association with a chromatin-remodeling complex suggests that it may contribute to prevent expression of genes that trigger the cell into mitosis. Binds to monomethylated and dimethylated 'Lys-20' on histone H4. Binds histone H3 peptides that are monomethylated or dimethylated on 'Lys-4', 'Lys-9' or 'Lys-27'.

L3MBTL2 Antibody (C-term) - References

Guo, Y., et al. Nucleic Acids Res. 37(7):2204-2210(2009)

Lechtenberg, B.C., et al. Protein Sci. 18(3):657-661(2009)

Trojer, P., et al. Cell 129(5):915-928(2007)

Collins, J.E., et al. Genome Biol. 5 (10), R84 (2004) :

Ogawa, H., et al. Science 296(5570):1132-1136(2002)