

**PPYR1 Antibody (N-term)**  
**Affinity Purified Rabbit Polyclonal Antibody (Pab)**  
**Catalog # AP14238a**

**Specification**

---

**PPYR1 Antibody (N-term) - Product Information**

Application	WB,E
Primary Accession	<a href="#">P50391</a>
Other Accession	<a href="#">NP_005963.3</a>
Reactivity	Human
Host	Rabbit
Clonality	Polyclonal
Isotype	Rabbit IgG
Calculated MW	42142
Antigen Region	1-30

**PPYR1 Antibody (N-term) - Additional Information**

**Gene ID** 100996758;5540

**Other Names**

Neuropeptide Y receptor type 4, NPY4-R, Pancreatic polypeptide receptor 1, PP1, NPY4R, PPYR1

**Target/Specificity**

This PPYR1 antibody is generated from rabbits immunized with a KLH conjugated synthetic peptide between 1-30 amino acids from the N-terminal region of human PPYR1.

**Dilution**

WB~~1:1000

E~~Use at an assay dependent concentration.

**Format**

Purified polyclonal antibody supplied in PBS with 0.09% (W/V) sodium azide. This antibody is purified through a protein A column, followed by peptide affinity purification.

**Storage**

Maintain refrigerated at 2-8°C for up to 2 weeks. For long term storage store at -20°C in small aliquots to prevent freeze-thaw cycles.

**Precautions**

PPYR1 Antibody (N-term) is for research use only and not for use in diagnostic or therapeutic procedures.

**PPYR1 Antibody (N-term) - Protein Information**

**Name** NPY4R

**Synonyms** PPYR1

**Function** G protein-coupled receptor for PPY/pancreatic polypeptide/PP, NPY/neuropeptide Y and PYY/peptide YY that is negatively coupled to cAMP (PubMed:[7493937](#), PubMed:[7592911](#)). The rank order of affinity for these polypeptides and their derivatives is PP, PP (2-36) and [Ile-31, Gln-34] PP > [Pro-34] PYY > PYY and [Leu-31, Pro-34] NPY > NPY > PYY (3-36) and NPY (2-36) > PP (13-36) > PP (31-36) > NPY free acid.

#### Cellular Location

Cell membrane; Multi-pass membrane protein

#### Tissue Location

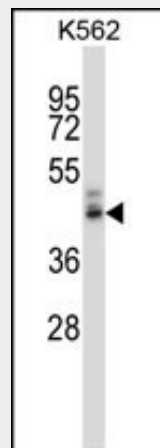
Highest levels found in brain, coronary artery and ileum. Low levels in pancreas and kidney. Detected in colon and small intestine.

### PPYR1 Antibody (N-term) - Protocols

Provided below are standard protocols that you may find useful for product applications.

- [Western Blot](#)
- [Blocking Peptides](#)
- [Dot Blot](#)
- [Immunohistochemistry](#)
- [Immunofluorescence](#)
- [Immunoprecipitation](#)
- [Flow Cytometry](#)
- [Cell Culture](#)

### PPYR1 Antibody (N-term) - Images



PPYR1 Antibody (N-term) (Cat. #AP14238a) western blot analysis in K562 cell line lysates (35ug/lane). This demonstrates the PPYR1 antibody detected the PPYR1 protein (arrow).

### PPYR1 Antibody (N-term) - Background

Receptor for neuropeptide Y and peptide YY. The rank order of affinity of this receptor for pancreatic polypeptides is PP, PP (2-36) and [Ile-31, Gln-34] PP > [Pro-34] PYY > PYY and [Leu-31, Pro-34] NPY > NPY > PYY (3-36) and NPY (2-36) > PP (13-36) > PP (31-36) > NPY free acid.

### PPYR1 Antibody (N-term) - References

Rose, J.E., et al. Mol. Med. 16 (7-8), 247-253 (2010) :

Umeda, T., et al. Peptides 30(8):1441-1447(2009)  
Sha, B.Y., et al. J. Hum. Genet. 54(4):199-202(2009)  
Gao, Y., et al. Biochemistry 47(43):11367-11376(2008)  
Parker, E., et al. Eur. J. Pharmacol. 440 (2-3), 173-187 (2002) :