

**CNOT2 Antibody (Center)**  
**Affinity Purified Rabbit Polyclonal Antibody (Pab)**  
**Catalog # AP14239c****Specification**

---

**CNOT2 Antibody (Center) - Product Information**

Application	WB,E
Primary Accession	<a href="#">O9NZN8</a>
Other Accession	<a href="#">O8C5L3</a> , <a href="#">NP_055330.1</a>
Reactivity	Human
Predicted	Mouse
Host	Rabbit
Clonality	Polyclonal
Isotype	Rabbit IgG
Antigen Region	272-301

**CNOT2 Antibody (Center) - Additional Information****Gene ID** 4848**Other Names**

CCR4-NOT transcription complex subunit 2, CCR4-associated factor 2, CNOT2, CDC36, NOT2

**Target/Specificity**

This CNOT2 antibody is generated from rabbits immunized with a KLH conjugated synthetic peptide between 272-301 amino acids from the Central region of human CNOT2.

**Dilution**

WB~~1:1000

E~~Use at an assay dependent concentration.

**Format**

Purified polyclonal antibody supplied in PBS with 0.09% (W/V) sodium azide. This antibody is purified through a protein A column, followed by peptide affinity purification.

**Storage**

Maintain refrigerated at 2-8°C for up to 2 weeks. For long term storage store at -20°C in small aliquots to prevent freeze-thaw cycles.

**Precautions**

CNOT2 Antibody (Center) is for research use only and not for use in diagnostic or therapeutic procedures.

**CNOT2 Antibody (Center) - Protein Information****Name** CNOT2**Synonyms** CDC36, NOT2

**Function** Component of the CCR4-NOT complex which is one of the major cellular mRNA deadenylases and is linked to various cellular processes including bulk mRNA degradation, miRNA-mediated repression, translational repression during translational initiation and general transcription regulation. Additional complex functions may be a consequence of its influence on mRNA expression. Required for the CCR4-NOT complex structural integrity. Can repress transcription and may link the CCR4-NOT complex to transcriptional regulation; the repressive function may specifically involve the N-CoR repressor complex containing HDAC3, NCOR1 and NCOR2. Involved in the maintenance of embryonic stem (ES) cell identity.

**Cellular Location**

Cytoplasm. Nucleus

**Tissue Location**

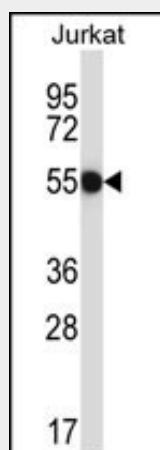
Ubiquitous. Highly expressed in brain, heart, thymus, spleen, kidney, liver, small intestine, placenta, lung and peripheral blood leukocytes.

**CNOT2 Antibody (Center) - Protocols**

Provided below are standard protocols that you may find useful for product applications.

- [Western Blot](#)
- [Blocking Peptides](#)
- [Dot Blot](#)
- [Immunohistochemistry](#)
- [Immunofluorescence](#)
- [Immunoprecipitation](#)
- [Flow Cytometry](#)
- [Cell Culture](#)

**CNOT2 Antibody (Center) - Images**



CNOT2 Antibody (Center) (Cat. #AP14239c) western blot analysis in Jurkat cell line lysates (35ug/lane). This demonstrates the CNOT2 antibody detected the CNOT2 protein (arrow).

**CNOT2 Antibody (Center) - Background**

This gene encodes a subunit of the multi-component CCR4-NOT complex. The CCR4-NOT complex regulates mRNA synthesis and degradation and is also thought to be involved in mRNA splicing, transport and localization. The encoded protein interacts with

histone deacetylases and functions as a repressor of polymerase II transcription. Alternatively spliced transcript variants have been observed for this gene.

#### **CNOT2 Antibody (Center) - References**

Lau, N.C., et al. Biochem. J. 422(3):443-453(2009)  
Miyasaka, T., et al. Cancer Sci. 99(4):755-761(2008)  
Morita, M., et al. Mol. Cell. Biol. 27(13):4980-4990(2007)  
Sugiyama, N., et al. Mol. Cell Proteomics 6(6):1103-1109(2007)  
Matsuoka, S., et al. Science 316(5828):1160-1166(2007)