

AGGF1 Antibody (N-term)
Affinity Purified Rabbit Polyclonal Antibody (Pab)
Catalog # AP14242a**Specification**

AGGF1 Antibody (N-term) - Product Information

Application	WB,E
Primary Accession	Q8N302
Other Accession	NP_060516.2
Reactivity	Human
Host	Rabbit
Clonality	Polyclonal
Isotype	Rabbit IgG
Calculated MW	80977
Antigen Region	61-90

AGGF1 Antibody (N-term) - Additional Information**Gene ID** 55109**Other Names**

Angiogenic factor with G patch and FHA domains 1, Angiogenic factor VG5Q, hVG5Q, G patch domain-containing protein 7, Vasculogenesis gene on 5q protein, AGGF1, GPATC7, GPATCH7, VG5Q

Target/Specificity

This AGGF1 antibody is generated from rabbits immunized with a KLH conjugated synthetic peptide between 61-90 amino acids from the N-terminal region of human AGGF1.

Dilution

WB~~1:1000

E~~Use at an assay dependent concentration.

Format

Purified polyclonal antibody supplied in PBS with 0.09% (W/V) sodium azide. This antibody is purified through a protein A column, followed by peptide affinity purification.

Storage

Maintain refrigerated at 2-8°C for up to 2 weeks. For long term storage store at -20°C in small aliquots to prevent freeze-thaw cycles.

Precautions

AGGF1 Antibody (N-term) is for research use only and not for use in diagnostic or therapeutic procedures.

AGGF1 Antibody (N-term) - Protein Information**Name** AGGF1

Synonyms GPATC7, GPATCH7, VG5Q

Function Promotes angiogenesis and the proliferation of endothelial cells. Able to bind to endothelial cells and promote cell proliferation, suggesting that it may act in an autocrine fashion.

Cellular Location

Cytoplasm. Secreted. Note=Cytoplasmic in microvascular endothelial cells. Upon angiogenesis, when endothelial cell tube formation is initiated, it is secreted

Tissue Location

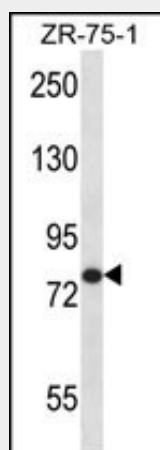
Widely expressed. Expressed in endothelial cells, vascular smooth muscle cells and osteoblasts. Expressed in umbilical vein endothelial cells and microvascular endothelial cells

AGGF1 Antibody (N-term) - Protocols

Provided below are standard protocols that you may find useful for product applications.

- [Western Blot](#)
- [Blocking Peptides](#)
- [Dot Blot](#)
- [Immunohistochemistry](#)
- [Immunofluorescence](#)
- [Immunoprecipitation](#)
- [Flow Cytometry](#)
- [Cell Culture](#)

AGGF1 Antibody (N-term) - Images



AGGF1 Antibody (N-term) (Cat. #AP14242a) western blot analysis in ZR-75-1 cell line lysates (35ug/lane). This demonstrates the AGGF1 antibody detected the AGGF1 protein (arrow).

AGGF1 Antibody (N-term) - Background

This gene encodes an angiogenic factor that promotes proliferation of endothelial cells. Mutations in this gene are associated with a susceptibility to Klippel-Trenaunay syndrome. Pseudogenes of this gene are found on chromosomes 3, 4, 10 and 16.

AGGF1 Antibody (N-term) - References

Fan, C., et al. J. Biol. Chem. 284(35):23331-23343(2009)
Hu, Y., et al. Ann. Hum. Genet. 72 (PT 5), 636-643 (2008) :
Gutierrez, S., et al. Am. J. Med. Genet. A 140(24):2832-2833(2006)
Olsen, J.V., et al. Cell 127(3):635-648(2006)
Kihiczak, G.G., et al. Int. J. Dermatol. 45(8):883-890(2006)