

**FETUB Antibody (C-term)**  
**Affinity Purified Rabbit Polyclonal Antibody (Pab)**  
**Catalog # AP14246b****Specification**

---

**FETUB Antibody (C-term) - Product Information**

Application	WB,E
Primary Accession	<a href="#">O9UGM5</a>
Other Accession	<a href="#">NP_055190.2</a>
Reactivity	Human
Host	Rabbit
Clonality	Polyclonal
Isotype	Rabbit IgG
Calculated MW	42055
Antigen Region	293-322

**FETUB Antibody (C-term) - Additional Information****Gene ID** 26998**Other Names**

Fetuin-B, 16G2, Fetuin-like protein IRL685, Gugu, FETUB

**Target/Specificity**

This FETUB antibody is generated from rabbits immunized with a KLH conjugated synthetic peptide between 293-322 amino acids from the C-terminal region of human FETUB.

**Dilution**

WB~~1:1000

E~~Use at an assay dependent concentration.

**Format**

Purified polyclonal antibody supplied in PBS with 0.09% (W/V) sodium azide. This antibody is purified through a protein A column, followed by peptide affinity purification.

**Storage**

Maintain refrigerated at 2-8°C for up to 2 weeks. For long term storage store at -20°C in small aliquots to prevent freeze-thaw cycles.

**Precautions**

FETUB Antibody (C-term) is for research use only and not for use in diagnostic or therapeutic procedures.

**FETUB Antibody (C-term) - Protein Information****Name** FETUB**Function** Protease inhibitor required for egg fertilization. Required to prevent premature zona

pellucida hardening before fertilization, probably by inhibiting the protease activity of ASTL, a protease that mediates the cleavage of ZP2 and triggers zona pellucida hardening (By similarity).

**Cellular Location**

Secreted.

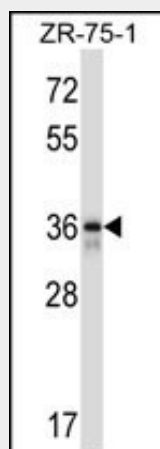
**Tissue Location**

Liver and testis.

**FETUB Antibody (C-term) - Protocols**

Provided below are standard protocols that you may find useful for product applications.

- [Western Blot](#)
- [Blocking Peptides](#)
- [Dot Blot](#)
- [Immunohistochemistry](#)
- [Immunofluorescence](#)
- [Immunoprecipitation](#)
- [Flow Cytometry](#)
- [Cell Culture](#)

**FETUB Antibody (C-term) - Images**

FETUB Antibody (C-term) (Cat. #AP14246b) western blot analysis in ZR-75-1 cell line lysates (35ug/lane). This demonstrates the FETUB antibody detected the FETUB protein (arrow).

**FETUB Antibody (C-term) - Background**

The protein encoded by this gene is a member of the fetuin family, part of the cystatin superfamily of cysteine protease inhibitors. Fetuins have been implicated in several diverse functions, including osteogenesis and bone resorption, regulation of the insulin and hepatocyte growth factor receptors, and response to systemic inflammation. This protein may be secreted by cells.

**FETUB Antibody (C-term) - References**

Coen, G., et al. Am. J. Kidney Dis. 48(1):106-113(2006)  
Liu, T., et al. J. Proteome Res. 4(6):2070-2080(2005)

Wajih, N., et al. J. Biol. Chem. 279(41):43052-43060(2004)  
Hsu, S.J., et al. Genome 47(5):931-946(2004)  
Denecke, B., et al. Biochem. J. 376 (PT 1), 135-145 (2003) :