

Mouse Scyl3 Antibody (C-term)
Affinity Purified Rabbit Polyclonal Antibody (Pab)
Catalog # AP14252b**Specification**

Mouse Scyl3 Antibody (C-term) - Product Information

Application	WB, IHC-P,E
Primary Accession	O9DBQ7
Other Accession	NP_083052.1
Reactivity	Mouse
Host	Rabbit
Clonality	Polyclonal
Isotype	Rabbit IgG
Calculated MW	81333
Antigen Region	671-699

Mouse Scyl3 Antibody (C-term) - Additional Information**Gene ID** 240880**Other Names**

Protein-associating with the carboxyl-terminal domain of ezrin, Ezrin-binding protein PACE-1, SCY1-like protein 3, Scyl3, Pace1

Target/Specificity

This Mouse Scyl3 antibody is generated from rabbits immunized with a KLH conjugated synthetic peptide between 671-699 amino acids from the C-terminal region of mouse Scyl3.

Dilution

WB~~1:1000

IHC-P~~1:10~50

E~~Use at an assay dependent concentration.

Format

Purified polyclonal antibody supplied in PBS with 0.09% (W/V) sodium azide. This antibody is purified through a protein A column, followed by peptide affinity purification.

Storage

Maintain refrigerated at 2-8°C for up to 2 weeks. For long term storage store at -20°C in small aliquots to prevent freeze-thaw cycles.

Precautions

Mouse Scyl3 Antibody (C-term) is for research use only and not for use in diagnostic or therapeutic procedures.

Mouse Scyl3 Antibody (C-term) - Protein Information**Name** Scyl3

Synonyms Pace1

Function May play a role in regulating cell adhesion/migration complexes in migrating cells.

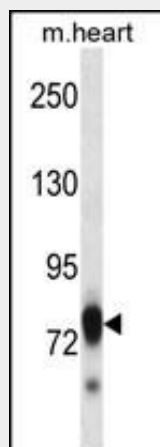
Cellular Location

Cytoplasm. Golgi apparatus. Cell projection, lamellipodium Note=Colocalized with EZR/VIL2, actin and CD44 in lamellipodia

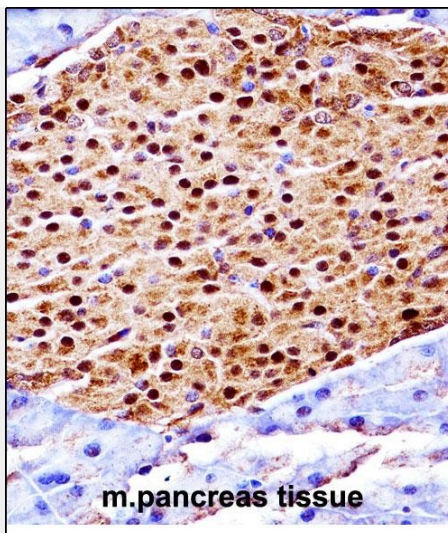
Mouse Scyl3 Antibody (C-term) - Protocols

Provided below are standard protocols that you may find useful for product applications.

- [Western Blot](#)
- [Blocking Peptides](#)
- [Dot Blot](#)
- [Immunohistochemistry](#)
- [Immunofluorescence](#)
- [Immunoprecipitation](#)
- [Flow Cytometry](#)
- [Cell Culture](#)

Mouse Scyl3 Antibody (C-term) - Images

Mouse Scyl3 Antibody (C-term) (Cat. #AP14252b) western blot analysis in mouse heart tissue lysates (35ug/lane). This demonstrates the Scyl3 antibody detected the Scyl3 protein (arrow).



Mouse Scyl3 Antibody (C-term) (AP14252b) immunohistochemistry analysis in formalin fixed and paraffin embedded mouse pancreas tissue followed by peroxidase conjugation of the secondary antibody and DAB staining. This data demonstrates the use of Mouse Scyl3 Antibody (C-term) for immunohistochemistry. Clinical relevance has not been evaluated.

Mouse Scyl3 Antibody (C-term) - Background

Scyl3 may play a role in regulating cell adhesion/migration complexes in migrating cells.

Mouse Scyl3 Antibody (C-term) - References

Blackshaw, S., et al. PLoS Biol. 2 (9), E247 (2004) :
Zambrowicz, B.P., et al. Proc. Natl. Acad. Sci. U.S.A. 100(24):14109-14114(2003)