

Mouse Phkg1 Antibody (C-term)
Affinity Purified Rabbit Polyclonal Antibody (Pab)
Catalog # AP14255b**Specification**

Mouse Phkg1 Antibody (C-term) - Product Information

Application	FC, WB,E
Primary Accession	P07934
Other Accession	NP_035209.1
Reactivity	Human, Mouse
Host	Rabbit
Clonality	Polyclonal
Isotype	Rabbit IgG
Calculated MW	44960
Antigen Region	302-331

Mouse Phkg1 Antibody (C-term) - Additional Information**Gene ID** 18682**Other Names**

Phosphorylase b kinase gamma catalytic chain, skeletal muscle/heart isoform, Phosphorylase kinase subunit gamma-1, Serine/threonine-protein kinase PHKG1, Phkg1, Phkg

Target/Specificity

This Mouse Phkg1 antibody is generated from rabbits immunized with a KLH conjugated synthetic peptide between 302-331 amino acids from the C-terminal region of mouse Phkg1.

Dilution

FC~~1:10~50

WB~~1:1000

E~~Use at an assay dependent concentration.

Format

Purified polyclonal antibody supplied in PBS with 0.09% (W/V) sodium azide. This antibody is purified through a protein A column, followed by peptide affinity purification.

Storage

Maintain refrigerated at 2-8°C for up to 2 weeks. For long term storage store at -20°C in small aliquots to prevent freeze-thaw cycles.

Precautions

Mouse Phkg1 Antibody (C-term) is for research use only and not for use in diagnostic or therapeutic procedures.

Mouse Phkg1 Antibody (C-term) - Protein Information**Name** Phkg1

Synonyms Phkg

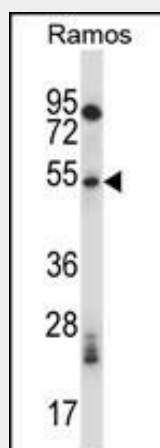
Function Catalytic subunit of the phosphorylase b kinase (PHK), which mediates the neural and hormonal regulation of glycogen breakdown (glycogenolysis) by phosphorylating and thereby activating glycogen phosphorylase. In vitro, phosphorylates PYGM, TNNT3, MAPT/TAU, GAP43 and NRGN/RC3 (By similarity).

Mouse Phkg1 Antibody (C-term) - Protocols

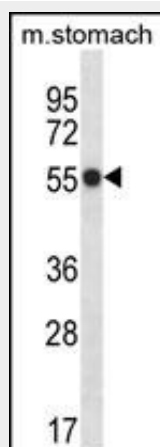
Provided below are standard protocols that you may find useful for product applications.

- [Western Blot](#)
- [Blocking Peptides](#)
- [Dot Blot](#)
- [Immunohistochemistry](#)
- [Immunofluorescence](#)
- [Immunoprecipitation](#)
- [Flow Cytometry](#)
- [Cell Culture](#)

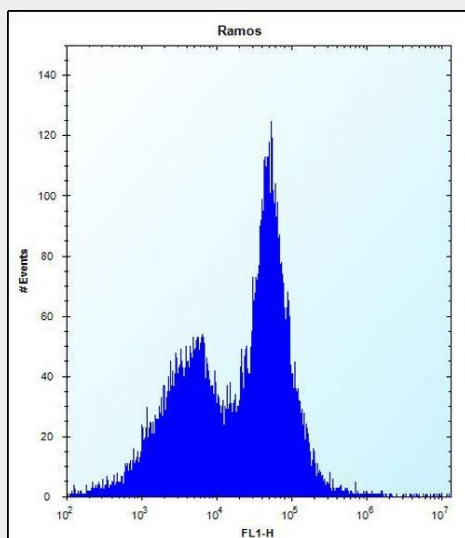
Mouse Phkg1 Antibody (C-term) - Images



Mouse Phkg1 Antibody (C-term) (Cat. #AP14255b) western blot analysis in Ramos cell line lysates (35ug/lane). This demonstrates the Phkg1 antibody detected the Phkg1 protein (arrow).



Mouse Phkg1 Antibody (C-term) (Cat. #AP14255b) western blot analysis in mouse stomach tissue lysates (35ug/lane). This demonstrates the Phkg1 antibody detected the Phkg1 protein (arrow).



Mouse Phkg1 Antibody (C-term) (Cat. #AP14255b) flow cytometric analysis of Ramos cells (right histogram) compared to a negative control cell (left histogram). FITC-conjugated donkey-anti-rabbit secondary antibodies were used for the analysis.

Mouse Phkg1 Antibody (C-term) - Background

Phosphorylase b kinase catalyzes the phosphorylation of serine in certain substrates, including troponin I.

Mouse Phkg1 Antibody (C-term) - References

Suto, J., et al. J. Vet. Med. Sci. 66(9):1033-1038(2004)
Visel, A., et al. Nucleic Acids Res. 32 (DATABASE ISSUE), D552-D556 (2004) :
Takenaka, M., et al. Kidney Int. 53(3):562-572(1998)
Maichele, A.J., et al. Mamm. Genome 5(1):15-18(1994)
Bender, P.K., et al. Genet. Anal. Tech. Appl. 10 (3-4), 99-101 (1993) :