

**Mapk3 Antibody (C-term)**  
**Affinity Purified Rabbit Polyclonal Antibody (Pab)**  
**Catalog # AP14266b**

**Specification**

---

**Mapk3 Antibody (C-term) - Product Information**

Application	WB, IHC-P,E
Primary Accession	<a href="#">Q63844</a> , <a href="#">P21708</a>
Other Accession	<a href="#">NP_036082.1</a>
Reactivity	Mouse, Rat
Host	Rabbit
Clonality	Polyclonal
Isotype	Rabbit IgG
Antigen Region	353-380

**Mapk3 Antibody (C-term) - Additional Information**

**Other Names**

Mitogen-activated protein kinase 3, MAP kinase 3, MAPK 3, ERT2, Extracellular signal-regulated kinase 1, ERK-1, Insulin-stimulated MAP2 kinase, MAP kinase isoform p44, p44-MAPK, MNK1, Microtubule-associated protein 2 kinase, p44-ERK1, Mapk3, Erk1, Prkm3

**Target/Specificity**

This Mapk3 antibody is generated from rabbits immunized with a KLH conjugated synthetic peptide between 353-380 amino acids from the C-terminal region of mouse Mapk3.

**Dilution**

WB~~1:1000  
IHC-P~~1:10~50  
E~~Use at an assay dependent concentration.

**Format**

Purified polyclonal antibody supplied in PBS with 0.09% (W/V) sodium azide. This antibody is purified through a protein A column, followed by peptide affinity purification.

**Storage**

Maintain refrigerated at 2-8°C for up to 2 weeks. For long term storage store at -20°C in small aliquots to prevent freeze-thaw cycles.

**Precautions**

Mapk3 Antibody (C-term) is for research use only and not for use in diagnostic or therapeutic procedures.

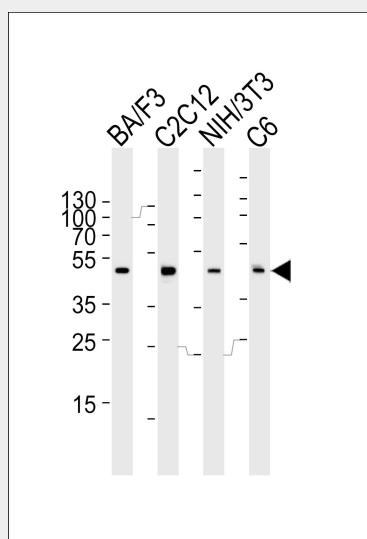
**Mapk3 Antibody (C-term) - Protein Information**

**Mapk3 Antibody (C-term) - Protocols**

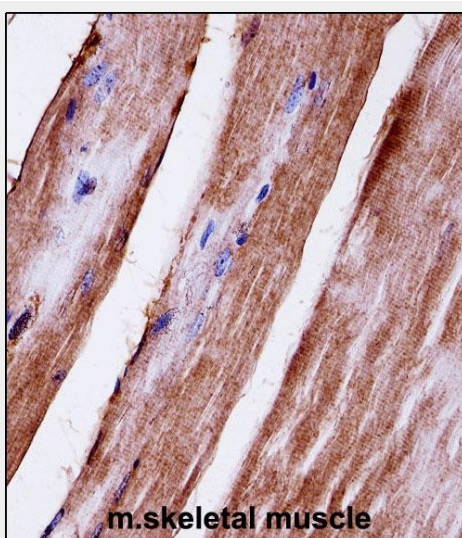
Provided below are standard protocols that you may find useful for product applications.

- [Western Blot](#)
- [Blocking Peptides](#)
- [Dot Blot](#)
- [Immunohistochemistry](#)
- [Immunofluorescence](#)
- [Immunoprecipitation](#)
- [Flow Cytometry](#)
- [Cell Culture](#)

#### Mapk3 Antibody (C-term) - Images



Western blot analysis of lysates from mouse BA/F3, C2C12, NIH/3T3 and rat C6 cell line (from left to right), using Mapk3 Antibody (C-term) (Cat. #AP14266b). AP14266b was diluted at 1:1000 at each lane. A goat anti-rabbit IgG H&L(HRP) at 1:5000 dilution was used as the secondary antibody. Lysates at 35ug per lane.



Mapk3 Antibody (C-term) (AP14266b) immunohistochemistry analysis in formalin fixed and paraffin embedded mouse skeletal muscle followed by peroxidase conjugation of the secondary antibody and DAB staining. This data demonstrates the use of Mapk3 Antibody (C-term) for

immunohistochemistry. Clinical relevance has not been evaluated.

### **Mapk3 Antibody (C-term) - Background**

Involved in both the initiation and regulation of meiosis, mitosis, and postmitotic functions in differentiated cells by phosphorylating a number of transcription factors such as ELK-1. Phosphorylates EIF4EBP1; required for initiation of translation. Phosphorylates microtubule-associated protein 2 (MAP2) and heat shock factor protein 4 (HSF4) (By similarity). Phosphorylates SPZ1.

### **Mapk3 Antibody (C-term) - References**

Chen, W., et al. Biochem. Biophys. Res. Commun. 401(3):339-343(2010)  
Chandrakesan, P., et al. J. Biol. Chem. 285(43):33485-33498(2010)  
Alter, B.J., et al. J. Neurosci. 30(34):11537-11547(2010)  
Spruce, T., et al. Dev. Cell 19(2):207-219(2010)  
Bremer, J., et al. PLoS ONE 5 (8), E12450 (2010) :