

Lmx1a Antibody (Center)
Purified Rabbit Polyclonal Antibody (Pab)
Catalog # AP1426c**Specification**

Lmx1a Antibody (Center) - Product Information

Application	WB,E
Primary Accession	O9JKU8
Other Accession	Q8TE12
Reactivity	Human, Mouse
Host	Rabbit
Clonality	Polyclonal
Isotype	Rabbit IgG
Calculated MW	42857
Antigen Region	130-159

Lmx1a Antibody (Center) - Additional Information**Gene ID** 110648**Other Names**

LIM homeobox transcription factor 1-alpha, LIM/homeobox protein 11, LMX-11, LIM/homeobox protein LMX1A, Lmx1a

Target/Specificity

This Lmx1a antibody is generated from rabbits immunized with a KLH conjugated synthetic peptide between 130-159 amino acids from the Central region of human Lmx1a.

Dilution

WB~~1:1000

Format

Purified polyclonal antibody supplied in PBS with 0.09% (W/V) sodium azide. This antibody is purified through a protein G column, followed by dialysis against PBS.

Storage

Maintain refrigerated at 2-8°C for up to 2 weeks. For long term storage store at -20°C in small aliquots to prevent freeze-thaw cycles.

Precautions

Lmx1a Antibody (Center) is for research use only and not for use in diagnostic or therapeutic procedures.

Lmx1a Antibody (Center) - Protein Information**Name** Lmx1a**Function** Acts as a transcriptional activator by binding to an A/T-rich sequence, the FLAT element,

in the insulin gene promoter. Required for development of the roof plate and, in turn, for specification of dorsal cell fates in the CNS and developing vertebrae.

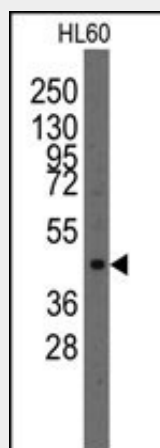
Cellular Location

Nucleus {ECO:0000255|PROSITE-ProRule:PRU00108}.

Lmx1a Antibody (Center) - Protocols

Provided below are standard protocols that you may find useful for product applications.

- [Western Blot](#)
- [Blocking Peptides](#)
- [Dot Blot](#)
- [Immunohistochemistry](#)
- [Immunofluorescence](#)
- [Immunoprecipitation](#)
- [Flow Cytometry](#)
- [Cell Culture](#)

Lmx1a Antibody (Center) - Images

Western blot analysis of anti-Lmx1a Pab (Cat.#AP1426c) in HL60 cell line lysates (35ug/lane). Lmx1a (arrow) was detected using the purified Pab.

Lmx1a Antibody (Center) - Background

Insulin is produced exclusively by the beta cells in the islets of Langerhans in the pancreas. The level and beta-cell specificity of insulin gene expression are regulated by a set of nuclear genes that bind to specific sequences within the promoter of the insulin gene (INS; MIM 176730) and interact with RNA polymerase to activate or repress transcription. LMX1 is a homeodomain protein that binds an A/T-rich sequence in the insulin promoter and stimulates transcription of insulin.

Lmx1a Antibody (Center) - References

Mangale,V.S., Science 319 (5861), 304-309 (2008)
Robertson,E.J., Development 134 (24), 4335-4345 (2007)