

Mouse Mark3 Antibody (C-term)
Affinity Purified Rabbit Polyclonal Antibody (Pab)
Catalog # AP14270B**Specification**

Mouse Mark3 Antibody (C-term) - Product Information

Application	WB,E
Primary Accession	Q03141
Other Accession	P27448 , NP_067491.2 , NP_073712.2
Reactivity	Human, Mouse
Host	Rabbit
Clonality	Polyclonal
Isotype	Rabbit IgG
Calculated MW	84390
Antigen Region	608-636

Mouse Mark3 Antibody (C-term) - Additional Information**Gene ID** 17169**Other Names**

MAP/microtubule affinity-regulating kinase 3, ELKL motif kinase 2, EMK-2, MPK-10, Mark3, Emk2, Mpk10

Target/Specificity

This Mouse Mark3 antibody is generated from rabbits immunized with a KLH conjugated synthetic peptide between 608-636 amino acids from the C-terminal region of mouse Mark3.

Dilution

WB~~1:1000

Format

Purified polyclonal antibody supplied in PBS with 0.09% (W/V) sodium azide. This antibody is purified through a protein A column, followed by peptide affinity purification.

Storage

Maintain refrigerated at 2-8°C for up to 2 weeks. For long term storage store at -20°C in small aliquots to prevent freeze-thaw cycles.

Precautions

Mouse Mark3 Antibody (C-term) is for research use only and not for use in diagnostic or therapeutic procedures.

Mouse Mark3 Antibody (C-term) - Protein Information**Name** Mark3**Synonyms** Emk2, Mpk10

Function Serine/threonine-protein kinase. Involved in the specific phosphorylation of microtubule-associated proteins for MAP2 and MAP4. Phosphorylates the microtubule-associated protein MAPT/TAU. Phosphorylates CDC25C on 'Ser-216'. Regulates localization and activity of some histone deacetylases by mediating phosphorylation of HDAC7, promoting subsequent interaction between HDAC7 and 14-3-3 and export from the nucleus. Regulates localization and activity of MITF by mediating its phosphorylation, promoting subsequent interaction between MITF and 14-3-3 and retention in the cytosol. Negatively regulates the Hippo signaling pathway and antagonizes the phosphorylation of LATS1. Cooperates with DLG5 to inhibit the kinase activity of STK3/MST2 toward LATS1. Phosphorylates PKP2 and KSR1.

Cellular Location

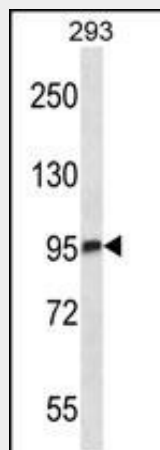
Cell membrane {ECO:0000250|UniProtKB:P27448}; Peripheral membrane protein {ECO:0000250|UniProtKB:P27448}. Cell projection, dendrite {ECO:0000250|UniProtKB:P27448}. Cytoplasm {ECO:0000250|UniProtKB:P27448}

Mouse Mark3 Antibody (C-term) - Protocols

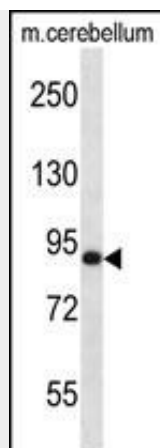
Provided below are standard protocols that you may find useful for product applications.

- [Western Blot](#)
- [Blocking Peptides](#)
- [Dot Blot](#)
- [Immunohistochemistry](#)
- [Immunofluorescence](#)
- [Immunoprecipitation](#)
- [Flow Cytometry](#)
- [Cell Culture](#)

Mouse Mark3 Antibody (C-term) - Images



Mouse Mark3 Antibody (C-term) (Cat. #AP14270b) western blot analysis in 293 cell line lysates (35ug/lane). This demonstrates the Mark3 antibody detected the Mark3 protein (arrow).



Mouse Mark3 Antibody (C-term) (Cat. #AP14270b) western blot analysis in mouse cerebellum tissue lysates (35ug/lane). This demonstrates the Mark3 antibody detected the Mark3 protein (arrow).

Mouse Mark3 Antibody (C-term) - Background

Involved in the specific phosphorylation of microtubule-associated proteins for tau, MAP2 and MAP4. Phosphorylates CDC25C (By similarity).

Mouse Mark3 Antibody (C-term) - References

- Lennerz, J.K., et al. Mol. Cell. Biol. 30(21):5043-5056(2010)
- Schwarz, T., et al. Biochem. Biophys. Res. Commun. 394(4):890-895(2010)
- Hezel, A.F., et al. Mol. Cell. Biol. 28(7):2414-2425(2008)
- Wang, C., et al. Acta Pharmacol. Sin. 28(3):334-338(2007)
- Tochio, N., et al. Protein Sci. 15(11):2534-2543(2006)