

Mouse Cdk15 Antibody (N-term)
Affinity Purified Rabbit Polyclonal Antibody (Pab)
Catalog # AP14286a

Specification

Mouse Cdk15 Antibody (N-term) - Product Information

Application	WB,E
Primary Accession	O3V3A1
Other Accession	XP_001475314.1 , XP_995753.1
Reactivity	Human, Mouse
Host	Rabbit
Clonality	Polyclonal
Isotype	Rabbit IgG
Calculated MW	48457
Antigen Region	96-124

Mouse Cdk15 Antibody (N-term) - Additional Information

Gene ID 271697

Other Names

Cyclin-dependent kinase 15, Amyotrophic lateral sclerosis 2 chromosomal region candidate gene 7 protein homolog, Cell division protein kinase 15, Serine/threonine-protein kinase ALS2CR7, Serine/threonine-protein kinase PFTAIRES-2, Cdk15, Als2cr7, Pftk2

Target/Specificity

This Mouse Cdk15 antibody is generated from rabbits immunized with a KLH conjugated synthetic peptide between 96-124 amino acids from the N-terminal region of mouse Cdk15.

Dilution

WB~~1:1000

E~~Use at an assay dependent concentration.

Format

Purified polyclonal antibody supplied in PBS with 0.09% (W/V) sodium azide. This antibody is purified through a protein A column, followed by peptide affinity purification.

Storage

Maintain refrigerated at 2-8°C for up to 2 weeks. For long term storage store at -20°C in small aliquots to prevent freeze-thaw cycles.

Precautions

Mouse Cdk15 Antibody (N-term) is for research use only and not for use in diagnostic or therapeutic procedures.

Mouse Cdk15 Antibody (N-term) - Protein Information

Name Cdk15

Synonyms Als2cr7, Pftk2

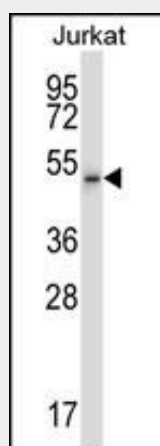
Function Serine/threonine-protein kinase that acts like an antiapoptotic protein that counters TRAIL/TNFSF10-induced apoptosis by inducing phosphorylation of BIRC5 at 'Thr-34'.

Mouse Cdk15 Antibody (N-term) - Protocols

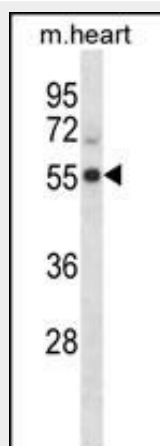
Provided below are standard protocols that you may find useful for product applications.

- [Western Blot](#)
- [Blocking Peptides](#)
- [Dot Blot](#)
- [Immunohistochemistry](#)
- [Immunofluorescence](#)
- [Immunoprecipitation](#)
- [Flow Cytometry](#)
- [Cell Culture](#)

Mouse Cdk15 Antibody (N-term) - Images



Mouse Cdk15 Antibody (N-term) (Cat. #AP14286a) western blot analysis in Jurkat cell line lysates (35ug/lane). This demonstrates the Cdk15 antibody detected the Cdk15 protein (arrow).



Mouse Cdk15 Antibody (N-term) (Cat. #AP14286a) western blot analysis in mouse heart tissue lysates (35ug/lane). This demonstrates the Cdk15 antibody detected the Cdk15 protein (arrow).

Mouse Cdk15 Antibody (N-term) - Background

Serine/threonine-protein kinase involved in the control of the eukaryotic cell cycle, whose activity is controlled by an associated cyclin (By similarity).

Mouse Cdk15 Antibody (N-term) - References

Zambrowicz, B.P., et al. Proc. Natl. Acad. Sci. U.S.A. 100(24):14109-14114(2003)