

Mouse Mastl Antibody (Center)
Affinity Purified Rabbit Polyclonal Antibody (Pab)
Catalog # AP14289c

Specification

Mouse Mastl Antibody (Center) - Product Information

Application	WB,E
Primary Accession	Q8C0P0
Other Accession	NP_080255.3
Reactivity	Mouse
Host	Rabbit
Clonality	Polyclonal
Isotype	Rabbit IgG
Calculated MW	95975
Antigen Region	561-589

Mouse Mastl Antibody (Center) - Additional Information

Gene ID 67121

Other Names

Serine/threonine-protein kinase greatwall, GW, GWL, Microtubule-associated serine/threonine-protein kinase-like, MAST-L, Mastl, Gw, Gwl

Target/Specificity

This Mouse Mastl antibody is generated from rabbits immunized with a KLH conjugated synthetic peptide between 561-589 amino acids from the Central region of mouse Mastl.

Dilution

WB~~1:1000

Format

Purified polyclonal antibody supplied in PBS with 0.09% (W/V) sodium azide. This antibody is purified through a protein A column, followed by peptide affinity purification.

Storage

Maintain refrigerated at 2-8°C for up to 2 weeks. For long term storage store at -20°C in small aliquots to prevent freeze-thaw cycles.

Precautions

Mouse Mastl Antibody (Center) is for research use only and not for use in diagnostic or therapeutic procedures.

Mouse Mastl Antibody (Center) - Protein Information

Name Mastl

Synonyms Gw, Gwl

Function Serine/threonine kinase that plays a key role in M phase by acting as a regulator of mitosis entry and maintenance. Acts by promoting the inactivation of protein phosphatase 2A (PP2A) during M phase: does not directly inhibit PP2A but acts by mediating phosphorylation and subsequent activation of ARPP19 and ENSA at 'Ser- 62' and 'Ser-67', respectively. ARPP19 and ENSA are phosphatase inhibitors that specifically inhibit the PPP2R2D (PR55-delta) subunit of PP2A. Inactivation of PP2A during M phase is essential to keep cyclin-B1-CDK1 activity high. Following DNA damage, it is also involved in checkpoint recovery by being inhibited (By similarity).

Cellular Location

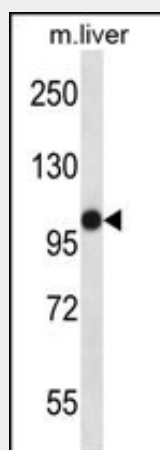
Cytoplasm, cytoskeleton, microtubule organizing center, centrosome. Nucleus. Note=During interphase is mainly nuclear, upon nuclear envelope breakdown localizes at the cytoplasm and during mitosis at the centrosomes.

Mouse Mastl Antibody (Center) - Protocols

Provided below are standard protocols that you may find useful for product applications.

- [Western Blot](#)
- [Blocking Peptides](#)
- [Dot Blot](#)
- [Immunohistochemistry](#)
- [Immunofluorescence](#)
- [Immunoprecipitation](#)
- [Flow Cytometry](#)
- [Cell Culture](#)

Mouse Mastl Antibody (Center) - Images



Mouse Mastl Antibody (Center) (Cat. #AP14289c) western blot analysis in mouse liver tissue lysates (35ug/lane). This demonstrates the Mastl antibody detected the Mastl protein (arrow).

Mouse Mastl Antibody (Center) - Background

Serine/threonine kinase. Mediates mitotic entry and maintenance. Maintains the correct equilibrium between cyclin B1-CDK1 and protein phosphatase 2A (PP2A) by promoting the inactivation of PP2A. Phosphorylates histone protein in vitro. May be involved in megakaryocyte differentiation (By similarity).

Mouse Mastl Antibody (Center) - References

Zambrowicz, B.P., et al. Proc. Natl. Acad. Sci. U.S.A. 100(24):14109-14114(2003)
Stryke, D., et al. Nucleic Acids Res. 31(1):278-281(2003)
Piao, Y., et al. Genome Res. 11(9):1553-1558(2001)