

Rax Antibody (C-term)
Affinity Purified Rabbit Polyclonal Antibody (Pab)
Catalog # AP1428b**Specification**

Rax Antibody (C-term) - Product Information

Application	WB,E
Primary Accession	O9Y2V3
Other Accession	O9JLT7 , O35602
Reactivity	Human, Mouse, Rat
Host	Rabbit
Clonality	Polyclonal
Isotype	Rabbit IgG
Calculated MW	36676
Antigen Region	315-346

Rax Antibody (C-term) - Additional Information**Gene ID** 30062**Other Names**

Retinal homeobox protein Rx, Retina and anterior neural fold homeobox protein, RAX, RX

Target/Specificity

This Rax antibody is generated from rabbits immunized with a KLH conjugated synthetic peptide between 315-346 amino acids from the C-terminal region of human Rax.

Dilution

WB~~1:1000

E~~Use at an assay dependent concentration.

Format

Purified polyclonal antibody supplied in PBS with 0.09% (W/V) sodium azide. This antibody is purified through a protein A column, followed by peptide affinity purification.

Storage

Maintain refrigerated at 2-8°C for up to 2 weeks. For long term storage store at -20°C in small aliquots to prevent freeze-thaw cycles.

Precautions

Rax Antibody (C-term) is for research use only and not for use in diagnostic or therapeutic procedures.

Rax Antibody (C-term) - Protein Information**Name** RAX**Synonyms** RX

Function Plays a critical role in eye formation by regulating the initial specification of retinal cells and/or their subsequent proliferation. Binds to the photoreceptor conserved element-I (PCE- 1/Ret 1) in the photoreceptor cell-specific arrestin promoter.

Cellular Location

Nucleus.

Tissue Location

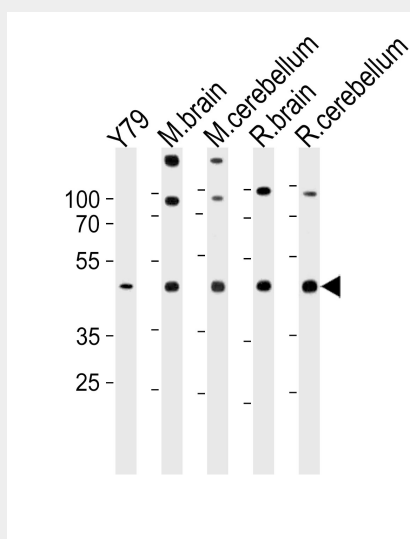
Expressed in the developing eye and weakly expressed in the adult retina

Rax Antibody (C-term) - Protocols

Provided below are standard protocols that you may find useful for product applications.

- [Western Blot](#)
- [Blocking Peptides](#)
- [Dot Blot](#)
- [Immunohistochemistry](#)
- [Immunofluorescence](#)
- [Immunoprecipitation](#)
- [Flow Cytometry](#)
- [Cell Culture](#)

Rax Antibody (C-term) - Images



Rax Antibody (C-term) (Cat. #AP1428b) western blot analysis in Y79 cell line, mouse brain, cerebellum and rat brain, cerebellum tissue lysates (35ug/lane). This demonstrates the Rax antibody detected the Rax protein (arrow).

Rax Antibody (C-term) - Background

Rax plays a critical role in eye formation by regulating the initial specification of retinal cells and/or their subsequent proliferation. It binds to the photoreceptor conserved element-I (PCE-1/Ret 1) in the photoreceptor cell-specific arrestin promoter.

Rax Antibody (C-term) - References

Voronina,V.A., Hum. Mol. Genet. 13 (3), 315-322 (2004)
Mikkola,I., J. Biol. Chem. 276 (6), 4109-4118 (2001)
Mathers,P.H., Cell. Mol. Life Sci. 57 (2), 186-194 (2000)