

Mouse Sgk196 Antibody (C-term)
Affinity Purified Rabbit Polyclonal Antibody (Pab)
Catalog # AP14296b**Specification**

Mouse Sgk196 Antibody (C-term) - Product Information

Application	WB,E
Primary Accession	O3TUA9
Other Accession	O4V8A9 , NP_083313.1
Reactivity	Mouse
Predicted	Rat
Host	Rabbit
Clonality	Polyclonal
Isotype	Rabbit IgG
Calculated MW	39969
Antigen Region	245-273

Mouse Sgk196 Antibody (C-term) - Additional Information**Gene ID** 74653**Other Names**

Protein O-mannose kinase, POMK, 271-, Protein kinase-like protein SgK196, Sugen kinase 196, Pomk, Sgk196

Target/Specificity

This Mouse Sgk196 antibody is generated from rabbits immunized with a KLH conjugated synthetic peptide between 245-273 amino acids from the C-terminal region of mouse Sgk196.

Dilution

WB~~1:1000

E~~Use at an assay dependent concentration.

Format

Purified polyclonal antibody supplied in PBS with 0.09% (W/V) sodium azide. This antibody is purified through a protein A column, followed by peptide affinity purification.

Storage

Maintain refrigerated at 2-8°C for up to 2 weeks. For long term storage store at -20°C in small aliquots to prevent freeze-thaw cycles.

Precautions

Mouse Sgk196 Antibody (C-term) is for research use only and not for use in diagnostic or therapeutic procedures.

Mouse Sgk196 Antibody (C-term) - Protein Information**Name** Pomk

Synonyms Sgk196

Function Protein O-mannose kinase that specifically mediates phosphorylation at the 6-position of an O-mannose of the trisaccharide (N-acetylgalactosamine (GalNAc)-beta-1,3-N-acetylglucosamine (GlcNAc)- beta-1,4-mannose) to generate phosphorylated O-mannosyl trisaccharide (N-acetylgalactosamine-beta-1,3-N-acetylglucosamine-beta-1,4- (phosphate-6-)mannose). Phosphorylated O-mannosyl trisaccharide is a carbohydrate structure present in alpha-dystroglycan (DAG1), which is required for binding laminin G-like domain-containing extracellular proteins with high affinity. Only shows kinase activity when the GalNAc-beta-3-GlcNAc-beta-terminus is linked to the 4-position of O- mannose, suggesting that this disaccharide serves as the substrate recognition motif (By similarity).

Cellular Location

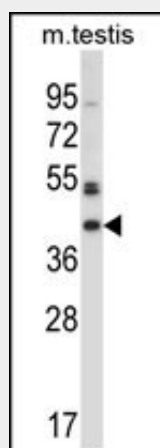
Endoplasmic reticulum membrane; Single-pass type II membrane protein

Mouse Sgk196 Antibody (C-term) - Protocols

Provided below are standard protocols that you may find useful for product applications.

- [Western Blot](#)
- [Blocking Peptides](#)
- [Dot Blot](#)
- [Immunohistochemistry](#)
- [Immunofluorescence](#)
- [Immunoprecipitation](#)
- [Flow Cytometry](#)
- [Cell Culture](#)

Mouse Sgk196 Antibody (C-term) - Images



Mouse Sgk196 Antibody (C-term) (Cat. #AP14296b) western blot analysis in mouse testis tissue lysates (35ug/lane). This demonstrates the Sgk196 antibody detected the Sgk196 protein (arrow).

Mouse Sgk196 Antibody (C-term) - Background

Belongs to the protein kinase superfamily. Ser/Thr protein kinase family. STKL subfamily.

Mouse Sgk196 Antibody (C-term) - References

Zambrowicz, B.P., et al. Proc. Natl. Acad. Sci. U.S.A. 100(24):14109-14114(2003)