

**Mouse Sgk494 Antibody (Center)**  
**Affinity Purified Rabbit Polyclonal Antibody (Pab)**  
**Catalog # AP14297C****Specification**

---

**Mouse Sgk494 Antibody (Center) - Product Information**

Application	WB,E
Primary Accession	<a href="#">Q5SYL1</a>
Reactivity	Mouse
Host	Rabbit
Clonality	Polyclonal
Isotype	Rabbit IgG
Calculated MW	31682
Antigen Region	71-99

**Mouse Sgk494 Antibody (Center) - Additional Information****Other Names**

Uncharacterized serine/threonine-protein kinase SgK494, Sugen kinase 494, Sgk494

**Target/Specificity**

This Mouse Sgk494 antibody is generated from rabbits immunized with a KLH conjugated synthetic peptide between 71-99 amino acids from the Central region of mouse Sgk494.

**Dilution**

WB~~1:1000

E~~Use at an assay dependent concentration.

**Format**

Purified polyclonal antibody supplied in PBS with 0.09% (W/V) sodium azide. This antibody is purified through a protein A column, followed by peptide affinity purification.

**Storage**

Maintain refrigerated at 2-8°C for up to 2 weeks. For long term storage store at -20°C in small aliquots to prevent freeze-thaw cycles.

**Precautions**

Mouse Sgk494 Antibody (Center) is for research use only and not for use in diagnostic or therapeutic procedures.

**Mouse Sgk494 Antibody (Center) - Protein Information**

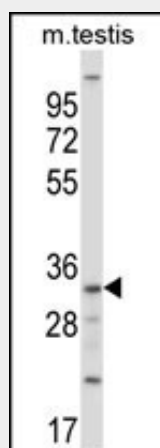
**Name** Rskr {ECO:0000250|UniProtKB:Q96LW2}

**Mouse Sgk494 Antibody (Center) - Protocols**

Provided below are standard protocols that you may find useful for product applications.

- [Western Blot](#)
- [Blocking Peptides](#)
- [Dot Blot](#)
- [Immunohistochemistry](#)
- [Immunofluorescence](#)
- [Immunoprecipitation](#)
- [Flow Cytometry](#)
- [Cell Culture](#)

#### **Mouse Sgk494 Antibody (Center) - Images**



Mouse Sgk494 Antibody (Center) (Cat. #AP14297c) western blot analysis in mouse testis tissue lysates (35ug/lane). This demonstrates the Sgk494 antibody detected the Sgk494 protein (arrow).

#### **Mouse Sgk494 Antibody (Center) - Background**

FLJ25006 likely exerts a protein serine/threonine kinase activity.