

**Mouse Ulk3 Antibody (Center)**  
**Affinity Purified Rabbit Polyclonal Antibody (Pab)**  
**Catalog # AP14304c**

**Specification**

---

**Mouse Ulk3 Antibody (Center) - Product Information**

Application	WB,E
Primary Accession	<a href="#">Q3U3Q1</a>
Other Accession	<a href="#">NP_082171.1</a>
Reactivity	Human
Host	Rabbit
Clonality	Polyclonal
Isotype	Rabbit IgG
Calculated MW	53572
Antigen Region	234-262

**Mouse Ulk3 Antibody (Center) - Additional Information**

**Gene ID** 71742

**Other Names**

Serine/threonine-protein kinase ULK3, Unc-51-like kinase 3, Ulk3

**Target/Specificity**

This Mouse Ulk3 antibody is generated from rabbits immunized with a KLH conjugated synthetic peptide between 234-262 amino acids from the Central region of mouse Ulk3.

**Dilution**

WB~~1:1000

E~~Use at an assay dependent concentration.

**Format**

Purified polyclonal antibody supplied in PBS with 0.09% (W/V) sodium azide. This antibody is purified through a protein A column, followed by peptide affinity purification.

**Storage**

Maintain refrigerated at 2-8°C for up to 2 weeks. For long term storage store at -20°C in small aliquots to prevent freeze-thaw cycles.

**Precautions**

Mouse Ulk3 Antibody (Center) is for research use only and not for use in diagnostic or therapeutic procedures.

**Mouse Ulk3 Antibody (Center) - Protein Information**

**Name** Ulk3

**Function** Serine/threonine protein kinase that acts as a regulator of Sonic hedgehog (SHH)

signaling and autophagy. Acts as a negative regulator of SHH signaling in the absence of SHH ligand: interacts with SUFU, thereby inactivating the protein kinase activity and preventing phosphorylation of GLI proteins (GLI1, GLI2 and/or GLI3). Positively regulates SHH signaling in the presence of SHH: dissociates from SUFU, autophosphorylates and mediates phosphorylation of GLI2, activating it and promoting its nuclear translocation. Phosphorylates in vitro GLI2, as well as GLI1 and GLI3, although less efficiently. Also acts as a regulator of autophagy: following cellular senescence, able to induce autophagy (By similarity).

#### Cellular Location

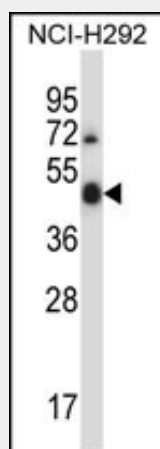
Cytoplasm. Note=Localizes to pre- autophagosomal structure during cellular senescence.

### Mouse Ulk3 Antibody (Center) - Protocols

Provided below are standard protocols that you may find useful for product applications.

- [Western Blot](#)
- [Blocking Peptides](#)
- [Dot Blot](#)
- [Immunohistochemistry](#)
- [Immunofluorescence](#)
- [Immunoprecipitation](#)
- [Flow Cytometry](#)
- [Cell Culture](#)

### Mouse Ulk3 Antibody (Center) - Images



Mouse Ulk3 Antibody (Center) (Cat. #AP14304c) western blot analysis in NCI-H292 cell line lysates (35ug/lane). This demonstrates the Ulk3 antibody detected the Ulk3 protein (arrow).

### Mouse Ulk3 Antibody (Center) - Background

Serine/threonine protein kinase which enhances GLI1 and GLI2 transcriptional activity and consequently positively regulates GLI-dependent SHH signaling. May exert this function by promoting GLI1 nuclear localization. Phosphorylates in vitro GLI2, as well as GLI1 and GLI3, although less efficiently (By similarity).

### Mouse Ulk3 Antibody (Center) - References

Maloverjan, A., et al. J. Biol. Chem. 285(39):30079-30090(2010)  
Gerhard, D.S., et al. Genome Res. 14 (10B), 2121-2127 (2004) :