

**Mouse Hoxc10 Antibody (C-term)**  
**Affinity Purified Rabbit Polyclonal Antibody (Pab)**  
**Catalog # AP14308b****Specification**

---

**Mouse Hoxc10 Antibody (C-term) - Product Information**

Application	WB, IHC-P,E
Primary Accession	<a href="#">P31257</a>
Reactivity	Mouse
Host	Rabbit
Clonality	Polyclonal
Isotype	Rabbit IgG
Calculated MW	38196
Antigen Region	217-246

**Mouse Hoxc10 Antibody (C-term) - Additional Information****Gene ID** 209448**Other Names**

Homeobox protein Hox-C10, Homeobox protein Hox-36, Hoxc10, Hox-36, Hoxc-10

**Target/Specificity**

This Mouse Hoxc10 antibody is generated from rabbits immunized with a KLH conjugated synthetic peptide between 217-246 amino acids from the C-terminal region of mouse Hoxc10.

**Dilution**

WB~~1:1000

IHC-P~~1:10~50

E~~Use at an assay dependent concentration.

**Format**

Purified polyclonal antibody supplied in PBS with 0.09% (W/V) sodium azide. This antibody is purified through a protein A column, followed by peptide affinity purification.

**Storage**

Maintain refrigerated at 2-8°C for up to 2 weeks. For long term storage store at -20°C in small aliquots to prevent freeze-thaw cycles.

**Precautions**

Mouse Hoxc10 Antibody (C-term) is for research use only and not for use in diagnostic or therapeutic procedures.

**Mouse Hoxc10 Antibody (C-term) - Protein Information****Name** Hoxc10**Synonyms** Hox-3.6, Hoxc-10

**Function** Sequence-specific transcription factor which is part of a developmental regulatory system that provides cells with specific positional identities on the anterior-posterior axis.

**Cellular Location**

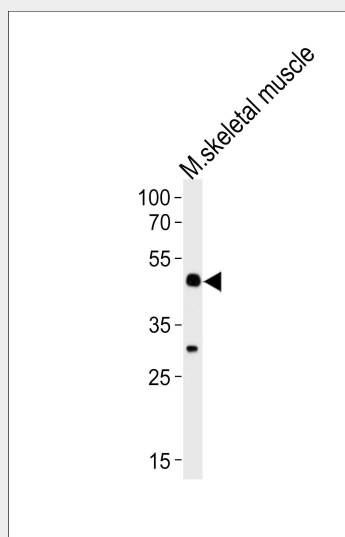
Nucleus.

**Mouse Hoxc10 Antibody (C-term) - Protocols**

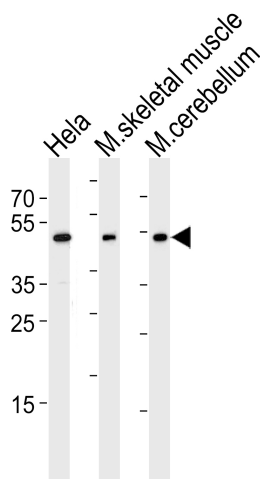
Provided below are standard protocols that you may find useful for product applications.

- [Western Blot](#)
- [Blocking Peptides](#)
- [Dot Blot](#)
- [Immunohistochemistry](#)
- [Immunofluorescence](#)
- [Immunoprecipitation](#)
- [Flow Cytometry](#)
- [Cell Culture](#)

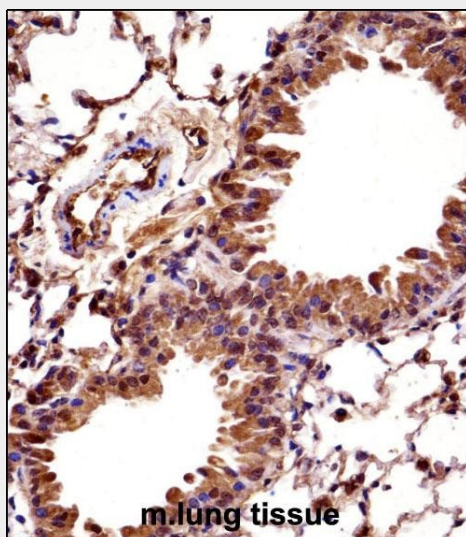
**Mouse Hoxc10 Antibody (C-term) - Images**



Western blot analysis of lysate from mouse skeletal muscle tissue lysate, using Mouse Hoxc10 Antibody (C-term)(Cat. #AP14308b). AP14308b was diluted at 1:1000 at each lane. A goat anti-rabbit IgG H&L(HRP) at 1:5000 dilution was used as the secondary antibody. Lysate at 35ug per lane.



Western blot analysis of lysates from Hela cell line, mouse skeletal muscle and mouse cerebellum tissue lysate(from left to right), using Mouse Hoxc10 Antibody (C-term)(Cat. #AP14308b). AP14308b was diluted at 1:1000 at each lane. A goat anti-rabbit IgG H&L(HRP) at 1:5000 dilution was used as the secondary antibody. Lysates at 35ug per lane.



Mouse Hoxc10 Antibody (C-term) (AP14308b)immunohistochemistry analysis in formalin fixed and paraffin embedded mouse lung tissue followed by peroxidase conjugation of the secondary antibody and DAB staining.This data demonstrates the use of Mouse Hoxc10 Antibody (C-term) for immunohistochemistry. Clinical relevance has not been evaluated.

### Mouse Hoxc10 Antibody (C-term) - Background

Sequence-specific transcription factor which is part of a developmental regulatory system that provides cells with specific positional identities on the anterior-posterior axis.