

LLGL1/2 Antibody (Center S645/S649)
Purified Rabbit Polyclonal Antibody (Pab)
Catalog # AP14311c**Specification**

LLGL1/2 Antibody (Center S645/S649) - Product Information

Application	WB,E
Primary Accession	Q6P1M3
Other Accession	Q3TJ91 , Q8K4K5 , Q80Y17 , Q15334 , Q8MKF0 , NP_004515.2 , NP_001015002.1 , NP_001026973.1
Reactivity	Human
Predicted	Bovine, Mouse, Rat
Host	Rabbit
Clonality	Polyclonal
Isotype	Rabbit IgG
Antigen Region	624-653

LLGL1/2 Antibody (Center S645/S649) - Additional Information**Gene ID** 3993**Other Names**

Lethal(2) giant larvae protein homolog 2, HGL, LLGL2

Target/Specificity

This LLGL1/2 antibody is generated from rabbits immunized with a KLH conjugated synthetic peptide between 624-653 amino acids from the Central region of human LLGL1/2.

Dilution

WB~~1:1000

Format

Purified polyclonal antibody supplied in PBS with 0.09% (W/V) sodium azide. This antibody is purified through a protein A column, followed by peptide affinity purification.

Storage

Maintain refrigerated at 2-8°C for up to 2 weeks. For long term storage store at -20°C in small aliquots to prevent freeze-thaw cycles.

Precautions

LLGL1/2 Antibody (Center S645/S649) is for research use only and not for use in diagnostic or therapeutic procedures.

LLGL1/2 Antibody (Center S645/S649) - Protein Information**Name** LLGL2

Function Part of a complex with GPSM2/LGN, PRKCI/aPKC and PARD6B/Par- 6, which may ensure the correct organization and orientation of bipolar spindles for normal cell division. This complex plays roles in the initial phase of the establishment of epithelial cell polarity.

Cellular Location

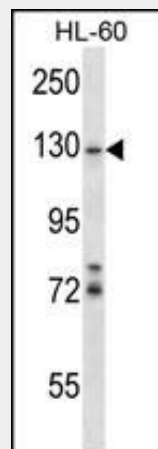
Cytoplasm. Note=Localized in the perinuclear structure and faintly at the cell- cell contacts sites in the interphase. Localized at the cell periphery during metaphase. Cortical localization in mitotic cells. Found in the lateral region of polarized epithelial cells

LLGL1/2 Antibody (Center S645/S649) - Protocols

Provided below are standard protocols that you may find useful for product applications.

- [Western Blot](#)
- [Blocking Peptides](#)
- [Dot Blot](#)
- [Immunohistochemistry](#)
- [Immunofluorescence](#)
- [Immunoprecipitation](#)
- [Flow Cytometry](#)
- [Cell Culture](#)

LLGL1/2 Antibody (Center S645/S649) - Images



LLGL1/2 Antibody (S645/S649) (Cat. #AP14311c) western blot analysis in HL-60 cell line lysates (35ug/lane). This demonstrates the LLGL1/2 antibody detected the LLGL1/2 protein (arrow).

LLGL1/2 Antibody (Center S645/S649) - Background

The lethal (2) giant larvae protein of *Drosophila* plays a role in asymmetric cell division, epithelial cell polarity, and cell migration. This human gene encodes a protein similar to lethal (2) giant larvae of *Drosophila*. In fly, the protein's ability to localize cell fate determinants is regulated by the atypical protein kinase C (aPKC). In human, this protein interacts with aPKC-containing complexes and is cortically localized in mitotic cells. Alternative splicing results in multiple transcript variants encoding different isoforms.

LLGL1/2 Antibody (Center S645/S649) - References

Lisovsky, M., et al. Hum. Pathol. 41(6):902-909(2010)
Yoshida, T., et al. Int. J. Mol. Med. 25(4):649-656(2010)
Oguri, M., et al. Am. J. Hypertens. 23(1):70-77(2010)
Yamada, Y., et al. Atherosclerosis 207(1):144-149(2009)
Lisovsky, M., et al. Mod. Pathol. 22(7):977-984(2009)