

**PIPPIN Antibody (Center)**  
**Affinity Purified Rabbit Polyclonal Antibody (Pab)**  
**Catalog # AP14318C**

**Specification**

---

**PIPPIN Antibody (Center) - Product Information**

Application	IHC-P, WB,E
Primary Accession	<a href="#">O9Y534</a>
Other Accession	<a href="#">Q63430</a> , <a href="#">Q91YQ3</a> , <a href="#">NP_055275.1</a>
Reactivity	Human
Predicted	Mouse, Rat
Host	Rabbit
Clonality	Polyclonal
Isotype	Rabbit IgG
Calculated MW	16786
Antigen Region	76-105

**PIPPIN Antibody (Center) - Additional Information**

**Gene ID** 27254

**Other Names**

Cold shock domain-containing protein C2, RNA-binding protein PIPPin, CSDC2, PIPPIN

**Target/Specificity**

This PIPPIN antibody is generated from rabbits immunized with a KLH conjugated synthetic peptide between 76-105 amino acids from the Central region of human PIPPIN.

**Dilution**

IHC-P~~1:10~50

WB~~1:1000

E~~Use at an assay dependent concentration.

**Format**

Purified polyclonal antibody supplied in PBS with 0.09% (W/V) sodium azide. This antibody is purified through a protein A column, followed by peptide affinity purification.

**Storage**

Maintain refrigerated at 2-8°C for up to 2 weeks. For long term storage store at -20°C in small aliquots to prevent freeze-thaw cycles.

**Precautions**

PIPPIN Antibody (Center) is for research use only and not for use in diagnostic or therapeutic procedures.

**PIPPIN Antibody (Center) - Protein Information**

**Name** CSDC2

**Synonyms** PIPPIN

**Function** RNA-binding factor which binds specifically to the very 3'- UTR ends of both histone H1 and H3.3 mRNAs, encompassing the polyadenylation signal. Might play a central role in the negative regulation of histone variant synthesis in the developing brain (By similarity).

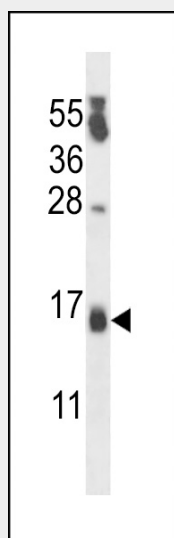
**Cellular Location**

Nucleus. Cytoplasm. Note=PIPPin-RNA complexes are located to the nucleus.

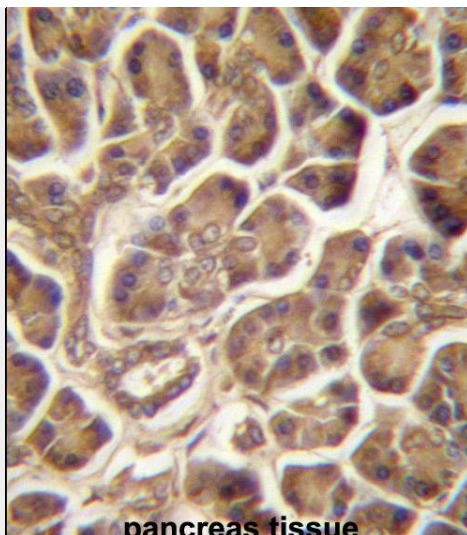
**PIPPIN Antibody (Center) - Protocols**

Provided below are standard protocols that you may find useful for product applications.

- [Western Blot](#)
- [Blocking Peptides](#)
- [Dot Blot](#)
- [Immunohistochemistry](#)
- [Immunofluorescence](#)
- [Immunoprecipitation](#)
- [Flow Cytometry](#)
- [Cell Culture](#)

**PIPPIN Antibody (Center) - Images**

PIPPIN Antibody (Center) (Cat. #AP14318c) western blot analysis in MDA-MB231 cell line lysates (35ug/lane). This demonstrates the PIPPIN antibody detected the PIPPIN protein (arrow).



PIPPIN Antibody (Center) (Cat. #AP14318c) immunohistochemistry analysis in formalin fixed and paraffin embedded human pancreas tissue followed by peroxidase conjugation of the secondary antibody and DAB staining. This data demonstrates the use of PIPPIN Antibody (Center) for immunohistochemistry. Clinical relevance has not been evaluated.

#### **PIPPIN Antibody (Center) - Background**

RNA-binding factor which binds specifically to the very 3'-UTR ends of both histone H1 and H3.3 mRNAs, encompassing the polyadenylation signal. Might play a central role in the negative regulation of histone variant synthesis in the developing brain (By similarity).

#### **PIPPIN Antibody (Center) - References**

Wu, C., et al. Proteomics 7(11):1775-1785(2007)  
Collins, J.E., et al. Genome Biol. 5 (10), R84 (2004) :  
Schafer, C., et al. Am. J. Physiol. Gastrointest. Liver Physiol. 285 (4), G726-G734 (2003) :  
Raimondi, L., et al. J. Cell. Mol. Med. 7(1):35-42(2003)  
Nastasi, T., et al. Neuroreport 11(10):2233-2236(2000)