

RRP1B Antibody (N-term)
Affinity Purified Rabbit Polyclonal Antibody (Pab)
Catalog # AP14325a**Specification**

RRP1B Antibody (N-term) - Product Information

Application	WB,E
Primary Accession	Q14684
Other Accession	NP_055871.1
Reactivity	Human
Host	Rabbit
Clonality	Polyclonal
Isotype	Rabbit IgG
Calculated MW	84428
Antigen Region	571-598

RRP1B Antibody (N-term) - Additional Information**Gene ID** 23076**Other Names**

Ribosomal RNA processing protein 1 homolog B, RRP1-like protein B, RRP1B, KIAA0179

Target/Specificity

This RRP1B antibody is generated from rabbits immunized with a KLH conjugated synthetic peptide between 571-598 amino acids from the N-terminal region of human RRP1B.

Dilution

WB~~1:1000

E~~Use at an assay dependent concentration.

Format

Purified polyclonal antibody supplied in PBS with 0.09% (W/V) sodium azide. This antibody is purified through a protein A column, followed by peptide affinity purification.

Storage

Maintain refrigerated at 2-8°C for up to 2 weeks. For long term storage store at -20°C in small aliquots to prevent freeze-thaw cycles.

Precautions

RRP1B Antibody (N-term) is for research use only and not for use in diagnostic or therapeutic procedures.

RRP1B Antibody (N-term) - Protein Information**Name** RRP1B**Synonyms** KIAA0179

Function Positively regulates DNA damage-induced apoptosis by acting as a transcriptional coactivator of proapoptotic target genes of the transcriptional activator E2F1 (PubMed:[20040599](#)). Likely to play a role in ribosome biogenesis by targeting serine/threonine protein phosphatase PP1 to the nucleolus (PubMed:[20926688](#)). Involved in regulation of mRNA splicing (By similarity). Inhibits SIPA1 GTPase activity (By similarity). Involved in regulating expression of extracellular matrix genes (By similarity). Associates with chromatin and may play a role in modulating chromatin structure (PubMed:[19710015](#)).

Cellular Location

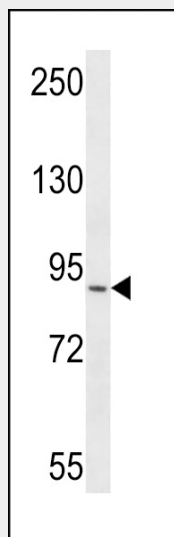
Nucleus, nucleolus. Nucleus, nucleoplasm. Chromosome. Note=Predominantly located in the nucleolus with a small amount found in the nucleoplasm (PubMed:[20926688](#)). Associates with the perichromatin region during metaphase and with cytoplasmic foci during telophase before reaccumulation in the nucleolus during G2 (PubMed:[20926688](#)). Associates with heterochromatin and euchromatin (PubMed:[19710015](#))

RRP1B Antibody (N-term) - Protocols

Provided below are standard protocols that you may find useful for product applications.

- [Western Blot](#)
- [Blocking Peptides](#)
- [Dot Blot](#)
- [Immunohistochemistry](#)
- [Immunofluorescence](#)
- [Immunoprecipitation](#)
- [Flow Cytometry](#)
- [Cell Culture](#)

RRP1B Antibody (N-term) - Images



RRP1B Antibody (N-term) (Cat. #AP14325a) western blot analysis in CEM cell line lysates (35ug/lane). This demonstrates the RRP1B antibody detected the RRP1B protein (arrow).

RRP1B Antibody (N-term) - Background

RRP1B belongs to the RRP1 family. It may be a novel susceptibility gene for breast cancer progression and metastasis.

RRP1B Antibody (N-term) - References

Rose, J.E., et al. Mol. Med. 16 (7-8), 247-253 (2010) :
Paik, J.C., et al. J. Biol. Chem. 285(9):6348-6363(2010)
Crawford, N.P., et al. J. Biol. Chem. 284(42):28660-28673(2009)
Hsieh, S.M., et al. Breast Cancer Res. 11 (5), R75 (2009) :
Crawford, N.P., et al. PLoS Genet. 3 (11), E214 (2007) :