

SYNPO Antibody (C-term)
Affinity Purified Rabbit Polyclonal Antibody (Pab)
Catalog # AP14341b**Specification**

SYNPO Antibody (C-term) - Product Information

Application	WB,E
Primary Accession	Q8N3V7
Other Accession	NP_001103444.1 , NP_001159681.1 , NP_001159680.1
Reactivity	Human
Host	Rabbit
Clonality	Polyclonal
Isotype	Rabbit IgG
Calculated MW	99463
Antigen Region	654-683

SYNPO Antibody (C-term) - Additional Information**Gene ID** 11346**Other Names**

Synaptopodin, SYNPO, KIAA1029

Target/Specificity

This SYNPO antibody is generated from rabbits immunized with a KLH conjugated synthetic peptide between 654-683 amino acids from the C-terminal region of human SYNPO.

Dilution

WB~~1:1000

E~~Use at an assay dependent concentration.

Format

Purified polyclonal antibody supplied in PBS with 0.09% (W/V) sodium azide. This antibody is purified through a protein A column, followed by peptide affinity purification.

Storage

Maintain refrigerated at 2-8°C for up to 2 weeks. For long term storage store at -20°C in small aliquots to prevent freeze-thaw cycles.

Precautions

SYNPO Antibody (C-term) is for research use only and not for use in diagnostic or therapeutic procedures.

SYNPO Antibody (C-term) - Protein Information**Name** SYNPO

Synonyms KIAA1029

Function Actin-associated protein that may play a role in modulating actin-based shape and motility of dendritic spines and renal podocyte foot processes. Seems to be essential for the formation of spine apparatuses in spines of telencephalic neurons, which is involved in synaptic plasticity (By similarity).

Cellular Location

Cytoplasm, cytoskeleton {ECO:0000250|UniProtKB:Q8CC35}. Cell junction, tight junction {ECO:0000250|UniProtKB:Q8CC35}. Perikaryon {ECO:0000250|UniProtKB:Q8CC35}. Cell projection, dendritic spine {ECO:0000250|UniProtKB:Q8CC35}. Postsynaptic density {ECO:0000250|UniProtKB:Q8CC35}. Synapse {ECO:0000250|UniProtKB:Q8CC35} Cytoplasm, cytosol. Note=Localized at the tight junction of cells. In brain, localized to the postsynaptic densities and in the perikarya. Associated with dendritic spines of a subset of synapses. {ECO:0000250|UniProtKB:Q8CC35}

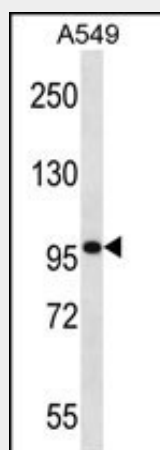
Tissue Location

Expressed in cerebral cortex.

SYNPO Antibody (C-term) - Protocols

Provided below are standard protocols that you may find useful for product applications.

- [Western Blot](#)
- [Blocking Peptides](#)
- [Dot Blot](#)
- [Immunohistochemistry](#)
- [Immunofluorescence](#)
- [Immunoprecipitation](#)
- [Flow Cytometry](#)
- [Cell Culture](#)

SYNPO Antibody (C-term) - Images

SYNPO Antibody (C-term) (Cat. #AP14341b) western blot analysis in A549 cell line lysates (35ug/lane). This demonstrates the SYNPO antibody detected the SYNPO protein (arrow).

SYNPO Antibody (C-term) - Background

Synaptopodin is an actin-associated protein that may play

a role in actin-based cell shape and motility. The name synaptopodin derives from the protein's associations with postsynaptic densities and dendritic spines and with renal podocytes (Mundel et al., 1997 [PubMed 9314539]).[supplied by OMIM].

SYNPO Antibody (C-term) - References

Kim, E.Y., et al. Am. J. Physiol. Renal Physiol. 299 (3), F594-F604 (2010) :
Joslyn, G., et al. Alcohol. Clin. Exp. Res. 34(5):800-812(2010)
Dai, S., et al. Nephrol. Dial. Transplant. 25(3):824-835(2010)
Duning, K., et al. J. Am. Soc. Nephrol. 19(10):1891-1903(2008)
Garovic, V.D., et al. Nephrol. Dial. Transplant. 22(4):1136-1143(2007)