

ZC3H12B Antibody (C-term)
Affinity Purified Rabbit Polyclonal Antibody (Pab)
Catalog # AP14347b**Specification**

ZC3H12B Antibody (C-term) - Product Information

| | |
|-------------------|--------------------------------|
| Application | WB,E |
| Primary Accession | Q5HYM0 |
| Other Accession | NP_001010888.3 |
| Reactivity | Human |
| Host | Rabbit |
| Clonality | Polyclonal |
| Isotype | Rabbit IgG |
| Calculated MW | 94205 |
| Antigen Region | 615-644 |

ZC3H12B Antibody (C-term) - Additional Information**Gene ID** 340554**Other Names**

Probable ribonuclease ZC3H12B, 31--, MCP-induced protein 2, Zinc finger CCCH domain-containing protein 12B, ZC3H12B, CXorf32, MCPIP2

Target/Specificity

This ZC3H12B antibody is generated from rabbits immunized with a KLH conjugated synthetic peptide between 615-644 amino acids from the C-terminal region of human ZC3H12B.

Dilution

WB~~1:1000

E~~Use at an assay dependent concentration.

Format

Purified polyclonal antibody supplied in PBS with 0.09% (W/V) sodium azide. This antibody is purified through a protein A column, followed by peptide affinity purification.

Storage

Maintain refrigerated at 2-8°C for up to 2 weeks. For long term storage store at -20°C in small aliquots to prevent freeze-thaw cycles.

Precautions

ZC3H12B Antibody (C-term) is for research use only and not for use in diagnostic or therapeutic procedures.

ZC3H12B Antibody (C-term) - Protein Information**Name** ZC3H12B

Synonyms CXorf32, MCPIP2

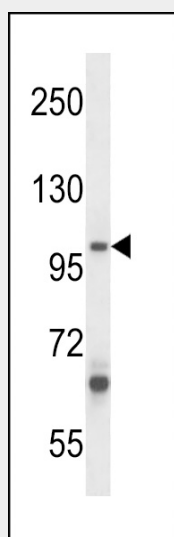
Function May function as RNase and regulate the levels of target RNA species.

ZC3H12B Antibody (C-term) - Protocols

Provided below are standard protocols that you may find useful for product applications.

- [Western Blot](#)
- [Blocking Peptides](#)
- [Dot Blot](#)
- [Immunohistochemistry](#)
- [Immunofluorescence](#)
- [Immunoprecipitation](#)
- [Flow Cytometry](#)
- [Cell Culture](#)

ZC3H12B Antibody (C-term) - Images



ZC3H12B Antibody (C-term) (Cat. #AP14347b) western blot analysis in A549 cell line lysates (35ug/lane). This demonstrates the ZC3H12B antibody detected the ZC3H12B protein (arrow).

ZC3H12B Antibody (C-term) - Background

The protein encoded by this gene belongs to a family of CCCH-type zinc finger proteins that are involved in the proinflammatory activation of macrophages. The exact function of this family member is unknown, but it is thought to function as a ribonuclease.

ZC3H12B Antibody (C-term) - References

Liang, J., et al. J. Biol. Chem. 283(10):6337-6346(2008)