

CSTA Antibody (C-term)
Affinity Purified Rabbit Polyclonal Antibody (Pab)
Catalog # AP14350b**Specification**

CSTA Antibody (C-term) - Product Information

Application	IHC-P, WB,E
Primary Accession	P01040
Other Accession	NP_005204.1
Reactivity	Human
Host	Rabbit
Clonality	Polyclonal
Isotype	Rabbit IgG
Calculated MW	11006
Antigen Region	69-98

CSTA Antibody (C-term) - Additional Information**Gene ID** 1475**Other Names**

Cystatin-A, Cystatin-AS, Stefin-A, Cystatin-A, N-terminally processed, CSTA, STF1, STFA

Target/Specificity

This CSTA antibody is generated from rabbits immunized with a KLH conjugated synthetic peptide between 69-98 amino acids from the C-terminal region of human CSTA.

Dilution

IHC-P~~1:10~50

WB~~1:1000

E~~Use at an assay dependent concentration.

Format

Purified polyclonal antibody supplied in PBS with 0.09% (W/V) sodium azide. This antibody is purified through a protein A column, followed by peptide affinity purification.

Storage

Maintain refrigerated at 2-8°C for up to 2 weeks. For long term storage store at -20°C in small aliquots to prevent freeze-thaw cycles.

Precautions

CSTA Antibody (C-term) is for research use only and not for use in diagnostic or therapeutic procedures.

CSTA Antibody (C-term) - Protein Information**Name** CSTA

Synonyms STF1, STFA

Function This is an intracellular thiol proteinase inhibitor. Has an important role in desmosome-mediated cell-cell adhesion in the lower levels of the epidermis.

Cellular Location

Cytoplasm.

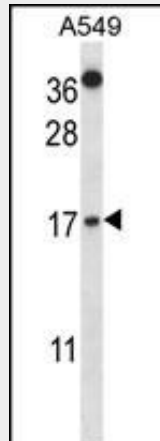
Tissue Location

Expressed in the skin throughout the epidermis.

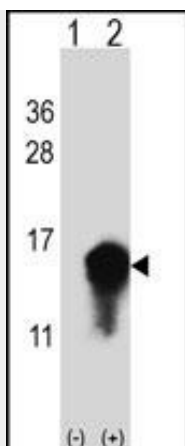
CSTA Antibody (C-term) - Protocols

Provided below are standard protocols that you may find useful for product applications.

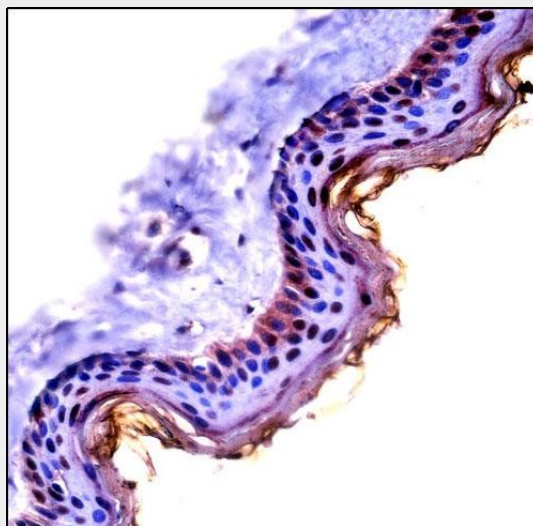
- [Western Blot](#)
- [Blocking Peptides](#)
- [Dot Blot](#)
- [Immunohistochemistry](#)
- [Immunofluorescence](#)
- [Immunoprecipitation](#)
- [Flow Cytometry](#)
- [Cell Culture](#)

CSTA Antibody (C-term) - Images

CSTA Antibody (C-term) (Cat. #AP14350b) western blot analysis in A549 cell line lysates (35ug/lane). This demonstrates the CSTA antibody detected the CSTA protein (arrow).



Western blot analysis of CSTA (arrow) using rabbit polyclonal CSTA Antibody (C-term) (Cat. #AP14350b). 293 cell lysates (2 ug/lane) either nontransfected (Lane 1) or transiently transfected (Lane 2) with the CSTA gene.



CSTA Antibody (C-term) (AP14350b) immunohistochemistry analysis in formalin fixed and paraffin embedded human skin tissue followed by peroxidase conjugation of the secondary antibody and DAB staining. This data demonstrates the use of CSTA Antibody (C-term) for immunohistochemistry. Clinical relevance has not been evaluated.

CSTA Antibody (C-term) - Background

The cystatin superfamily encompasses proteins that contain multiple cystatin-like sequences. Some of the members are active cysteine protease inhibitors, while others have lost or perhaps never acquired this inhibitory activity. There are three inhibitory families in the superfamily, including the type 1 cystatins (stefins), type 2 cystatins, and kininogens. This gene encodes a stefin that functions as a cysteine protease inhibitor, forming tight complexes with papain and the cathepsins B, H, and L. The protein is one of the precursor proteins of cornified cell envelope in keratinocytes and plays a role in epidermal development and maintenance. Stefins have been proposed as prognostic and diagnostic tools for cancer.

CSTA Antibody (C-term) - References

O'Seaghdha, C.M., et al. Hum. Mol. Genet. 19(21):4296-4303(2010)
Kestenbaum, B., et al. J. Am. Soc. Nephrol. 21(7):1223-1232(2010)
Takai, T., et al. J. Immunol. 183(12):7958-7965(2009)
Vasilopoulos, Y., et al. Eur. J. Hum. Genet. 16(8):1002-1009(2008)
Parker, B.S., et al. J. Pathol. 214(3):337-346(2008)