

RNF40 Antibody (C-term)
Affinity Purified Rabbit Polyclonal Antibody (Pab)
Catalog # AP14362B**Specification**

RNF40 Antibody (C-term) - Product Information

Application	WB,E
Primary Accession	O75150
Other Accession	O8CJB9 , Q3U319 , NP_055586.1
Reactivity	Human
Predicted	Mouse, Rat
Host	Rabbit
Clonality	Polyclonal
Isotype	Rabbit IgG
Calculated MW	113678
Antigen Region	697-725

RNF40 Antibody (C-term) - Additional Information**Gene ID** 9810**Other Names**

E3 ubiquitin-protein ligase BRE1B, BRE1-B, 632-, 95 kDa retinoblastoma-associated protein, RBP95, RING finger protein 40, RNF40, BRE1B, KIAA0661

Target/Specificity

This RNF40 antibody is generated from rabbits immunized with a KLH conjugated synthetic peptide between 697-725 amino acids from the C-terminal region of human RNF40.

Dilution

WB~~1:1000

E~~Use at an assay dependent concentration.

Format

Purified polyclonal antibody supplied in PBS with 0.09% (W/V) sodium azide. This antibody is purified through a protein A column, followed by peptide affinity purification.

Storage

Maintain refrigerated at 2-8°C for up to 2 weeks. For long term storage store at -20°C in small aliquots to prevent freeze-thaw cycles.

Precautions

RNF40 Antibody (C-term) is for research use only and not for use in diagnostic or therapeutic procedures.

RNF40 Antibody (C-term) - Protein Information**Name** RNF40

Synonyms BRE1B, KIAA0661

Function Component of the RNF20/40 E3 ubiquitin-protein ligase complex that mediates monoubiquitination of 'Lys-120' of histone H2B (H2BK120ub1). H2BK120ub1 gives a specific tag for epigenetic transcriptional activation and is also prerequisite for histone H3 'Lys-4' and 'Lys-79' methylation (H3K4me and H3K79me, respectively). It thereby plays a central role in histone code and gene regulation. The RNF20/40 complex forms a H2B ubiquitin ligase complex in cooperation with the E2 enzyme UBE2A or UBE2B; reports about the cooperation with UBE2E1/UBCH are contradictory. Required for transcriptional activation of Hox genes.

Cellular Location

Nucleus.

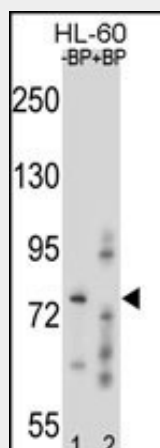
Tissue Location

Ubiquitously expressed. Expressed at higher level in testis, heart and pancreas, while it is only weakly expressed in lung, skeletal muscle and small intestine

RNF40 Antibody (C-term) - Protocols

Provided below are standard protocols that you may find useful for product applications.

- [Western Blot](#)
- [Blocking Peptides](#)
- [Dot Blot](#)
- [Immunohistochemistry](#)
- [Immunofluorescence](#)
- [Immunoprecipitation](#)
- [Flow Cytometry](#)
- [Cell Culture](#)

RNF40 Antibody (C-term) - Images

Western blot analysis of RNF40 Antibody (C-term) Pab (Cat. #AP14362b) pre-incubated without (lane 1) and with (lane 2) blocking peptide in HL-60 cell line lysate. RNF40 Antibody (C-term) (arrow) was detected using the purified Pab.

RNF40 Antibody (C-term) - Background

The protein encoded by this gene contains a RING finger, a motif known to be involved in protein-protein and protein-DNA

interactions. This protein was reported to interact with the tumor suppressor protein RB1. Studies of the rat counterpart suggested that this protein may function as an E3 ubiquitin-protein ligase, and facilitate the ubiquitination and degradation of syntaxin 1, which is an essential component of the neurotransmitter release machinery.

RNF40 Antibody (C-term) - References

Chernikova, S.B., et al. Radiat. Res. 174(5):558-565(2010)
Kim, J., et al. Cell 137(3):459-471(2009)
Olsen, J.V., et al. Cell 127(3):635-648(2006)
Olsen, J.V., et al. Cell 127(3):635-648(2006)
Zhu, B., et al. Mol. Cell 20(4):601-611(2005)