

**PADI2 Antibody (C-term)**  
**Affinity Purified Rabbit Polyclonal Antibody (Pab)**  
**Catalog # AP14369b**

**Specification**

---

**PADI2 Antibody (C-term) - Product Information**

Application	WB,E
Primary Accession	<a href="#">O9Y2J8</a>
Other Accession	<a href="#">NP_031391.2</a>
Reactivity	Human
Host	Rabbit
Clonality	Polyclonal
Isotype	Rabbit IgG
Calculated MW	75564
Antigen Region	557-586

**PADI2 Antibody (C-term) - Additional Information**

**Gene ID** 11240

**Other Names**

Protein-arginine deiminase type-2, PAD-H19, Peptidylarginine deiminase II, Protein-arginine deiminase type II, PADI2, KIAA0994, PDI2

**Target/Specificity**

This PADI2 antibody is generated from rabbits immunized with a KLH conjugated synthetic peptide between 557-586 amino acids from the C-terminal region of human PADI2.

**Dilution**

WB~~1:1000

E~~Use at an assay dependent concentration.

**Format**

Purified polyclonal antibody supplied in PBS with 0.09% (W/V) sodium azide. This antibody is purified through a protein A column, followed by peptide affinity purification.

**Storage**

Maintain refrigerated at 2-8°C for up to 2 weeks. For long term storage store at -20°C in small aliquots to prevent freeze-thaw cycles.

**Precautions**

PADI2 Antibody (C-term) is for research use only and not for use in diagnostic or therapeutic procedures.

**PADI2 Antibody (C-term) - Protein Information**

**Name** PADI2

**Synonyms** KIAA0994, PAD2, PDI2

**Function** Catalyzes the deimination of arginine residues of proteins.

**Cellular Location**  
Cytoplasm.

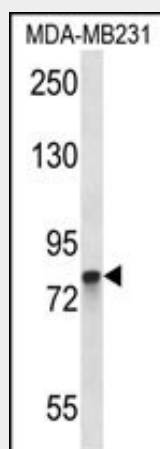
**Tissue Location**  
Detected in keratinocytes in epidermis (at protein level).

### **PADI2 Antibody (C-term) - Protocols**

Provided below are standard protocols that you may find useful for product applications.

- [Western Blot](#)
- [Blocking Peptides](#)
- [Dot Blot](#)
- [Immunohistochemistry](#)
- [Immunofluorescence](#)
- [Immunoprecipitation](#)
- [Flow Cytometry](#)
- [Cell Culture](#)

### **PADI2 Antibody (C-term) - Images**



PADI2 Antibody (C-term) (Cat. #AP14369b) western blot analysis in MDA-MB231 cell line lysates (35ug/lane). This demonstrates the PADI2 antibody detected the PADI2 protein (arrow).

### **PADI2 Antibody (C-term) - Background**

This gene encodes a member of the peptidyl arginine deiminase family of enzymes, which catalyze the post-translational deimination of proteins by converting arginine residues into citrullines in the presence of calcium ions. The family members have distinct substrate specificities and tissue-specific expression patterns. The type II enzyme is the most widely expressed family member. Known substrates for this enzyme include myelin basic protein in the central nervous system and vimentin in skeletal muscle and macrophages. This enzyme is thought to play a role in the onset and progression of neurodegenerative human

disorders, including Alzheimer disease and multiple sclerosis, and it has also been implicated in glaucoma pathogenesis. This gene exists in a cluster with four other paralogous genes. [provided by RefSeq].

#### **PADI2 Antibody (C-term) - References**

Rose, J.E., et al. Mol. Med. 16 (7-8), 247-253 (2010) :  
Jang, B., et al. Acta Neuropathol. 119(2):199-210(2010)  
Cafaro, T.A., et al. Mol. Vis. 16, 1654-1658 (2010) :  
Hojo-Nakashima, I., et al. J. Biochem. 146(4):471-479(2009)  
Watanabe, Y., et al. J. Hum. Genet. 54(7):430-432(2009)