

**FRAT1 Antibody (C-term)**  
**Purified Rabbit Polyclonal Antibody (Pab)**  
**Catalog # AP1436b****Specification**

---

**FRAT1 Antibody (C-term) - Product Information**

Application	WB, IHC-P,E
Primary Accession	<a href="#">Q92837</a>
Reactivity	Human
Host	Rabbit
Clonality	Polyclonal
Isotype	Rabbit IgG
Antigen Region	244-274

**FRAT1 Antibody (C-term) - Additional Information****Gene ID** 10023**Other Names**

Proto-oncogene FRAT1, Frequently rearranged in advanced T-cell lymphomas 1, FRAT-1, FRAT1

**Target/Specificity**

This FRAT1 antibody is generated from rabbits immunized with a KLH conjugated synthetic peptide between 244-274 amino acids from the C-terminal region of human FRAT1.

**Dilution**

WB~~1:1000

IHC-P~~1:10~50

E~~Use at an assay dependent concentration.

**Format**

Purified polyclonal antibody supplied in PBS with 0.09% (W/V) sodium azide. This antibody is prepared by Saturated Ammonium Sulfate (SAS) precipitation followed by dialysis against PBS.

**Storage**

Maintain refrigerated at 2-8°C for up to 2 weeks. For long term storage store at -20°C in small aliquots to prevent freeze-thaw cycles.

**Precautions**

FRAT1 Antibody (C-term) is for research use only and not for use in diagnostic or therapeutic procedures.

**FRAT1 Antibody (C-term) - Protein Information****Name** FRAT1**Function** Positively regulates the Wnt signaling pathway by stabilizing beta-catenin through the association with GSK-3. May play a role in tumor progression and collaborate with PIM1 and MYC in

lymphomagenesis.

#### **Cellular Location**

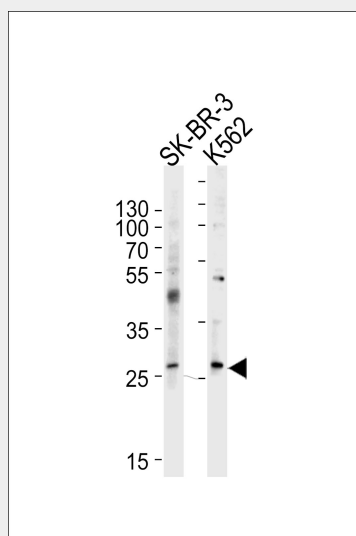
Cytoplasm.

#### **FRAT1 Antibody (C-term) - Protocols**

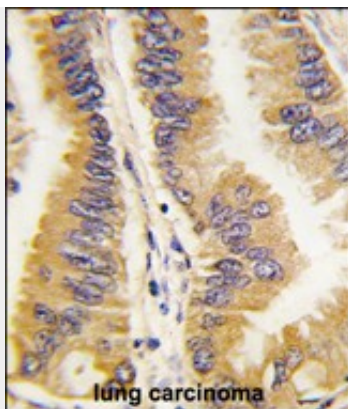
Provided below are standard protocols that you may find useful for product applications.

- [Western Blot](#)
- [Blocking Peptides](#)
- [Dot Blot](#)
- [Immunohistochemistry](#)
- [Immunofluorescence](#)
- [Immunoprecipitation](#)
- [Flow Cytometry](#)
- [Cell Culture](#)

#### **FRAT1 Antibody (C-term) - Images**



Western blot analysis of lysates from SK-BR-3, K562 cell line (from left to right), using FRAT1 Antibody (C-term)(Cat. #AP1436b). AP1436b was diluted at 1:1000 at each lane. A goat anti-rabbit IgG H&L(HRP) at 1:5000 dilution was used as the secondary antibody. Lysates at 35ug per lane.



Formalin-fixed and paraffin-embedded human lung carcinoma tissue reacted with FRAT1 antibody (C-term) (Cat.#AP1436b), which was peroxidase-conjugated to the secondary antibody, followed by DAB staining. This data demonstrates the use of this antibody for immunohistochemistry; clinical relevance has not been evaluated.

#### **FRAT1 Antibody (C-term) - Background**

FRAT1 belongs to the GSK-3-binding protein family. It may function in tumor progression and in lymphomagenesis.

#### **FRAT1 Antibody (C-term) - References**

Hagen,T., J. Biol. Chem. 281 (46), 35021-35029 (2006)

Wang,Y., Br. J. Cancer 94 (5), 686-691 (2006)

Hino,S., J. Biol. Chem. 278 (16), 14066-14073 (2003)

#### **FRAT1 Antibody (C-term) - Citations**

- [The clinical significance of FRAT1 and ABCG2 expression in pancreatic ductal adenocarcinoma.](#)