

FRAT1 Antibody (Center)
Purified Rabbit Polyclonal Antibody (Pab)
Catalog # AP1436c**Specification**

FRAT1 Antibody (Center) - Product Information

Application	IHC-P, WB,E
Primary Accession	Q92837
Other Accession	O75474
Reactivity	Human
Host	Rabbit
Clonality	Polyclonal
Isotype	Rabbit IgG
Calculated MW	29093
Antigen Region	99-128

FRAT1 Antibody (Center) - Additional Information**Gene ID** 10023**Other Names**

Proto-oncogene FRAT1, Frequently rearranged in advanced T-cell lymphomas 1, FRAT-1, FRAT1

Target/Specificity

This FRAT1 antibody is generated from rabbits immunized with a KLH conjugated synthetic peptide between 99-128 amino acids from the Central region of human FRAT1.

Dilution

IHC-P~~1:10~50

WB~~1:1000

E~~Use at an assay dependent concentration.

Format

Purified polyclonal antibody supplied in PBS with 0.09% (W/V) sodium azide. This antibody is prepared by Saturated Ammonium Sulfate (SAS) precipitation followed by dialysis against PBS.

Storage

Maintain refrigerated at 2-8°C for up to 2 weeks. For long term storage store at -20°C in small aliquots to prevent freeze-thaw cycles.

Precautions

FRAT1 Antibody (Center) is for research use only and not for use in diagnostic or therapeutic procedures.

FRAT1 Antibody (Center) - Protein Information**Name** FRAT1

Function Positively regulates the Wnt signaling pathway by stabilizing beta-catenin through the association with GSK-3. May play a role in tumor progression and collaborate with PIM1 and MYC in lymphomagenesis.

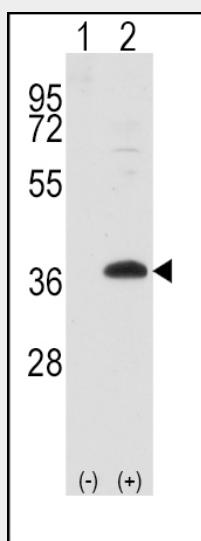
Cellular Location
Cytoplasm.

FRAT1 Antibody (Center) - Protocols

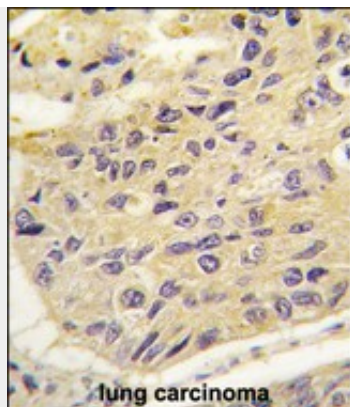
Provided below are standard protocols that you may find useful for product applications.

- [Western Blot](#)
- [Blocking Peptides](#)
- [Dot Blot](#)
- [Immunohistochemistry](#)
- [Immunofluorescence](#)
- [Immunoprecipitation](#)
- [Flow Cytometry](#)
- [Cell Culture](#)

FRAT1 Antibody (Center) - Images



Western blot analysis of FRAT1 (arrow) using rabbit polyclonal FRAT1 Antibody (Center) (Cat.#AP1436c).293 cell lysates (2 ug/lane) either nontransfected (Lane 1) or transiently transfected with the FRAT1 gene (Lane 2) (Origene Technologies).



Formalin-fixed and paraffin-embedded human lung carcinoma tissue reacted with FRAT1 antibody (Center) (Cat.#AP1436c), which was peroxidase-conjugated to the secondary antibody, followed by DAB staining. This data demonstrates the use of this antibody for immunohistochemistry; clinical relevance has not been evaluated.

FRAT1 Antibody (Center) - Background

FRAT1 belongs to the GSK-3-binding protein family. It may function in tumor progression and in lymphomagenesis. It positively regulates the Wnt signaling pathway by stabilizing beta-catenin through the association with GSK-3. It may play a role in tumor progression and collaborate with PIM1 and MYC in lymphomagenesis.

FRAT1 Antibody (Center) - References

Hagen,T., J. Biol. Chem. 281 (46), 35021-35029 (2006)
Wang,Y., Br. J. Cancer 94 (5), 686-691 (2006)
Hino,S., J. Biol. Chem. 278 (16), 14066-14073 (2003)