

CARD10 Antibody (Center)
Affinity Purified Rabbit Polyclonal Antibody (Pab)
Catalog # AP14373C

Specification

CARD10 Antibody (Center) - Product Information

Application	WB,E
Primary Accession	O9BWT7
Other Accession	NP_055365.2
Reactivity	Human
Host	Rabbit
Clonality	Polyclonal
Isotype	Rabbit IgG
Calculated MW	115931
Antigen Region	518-546

CARD10 Antibody (Center) - Additional Information

Gene ID 29775

Other Names

Caspase recruitment domain-containing protein 10, CARD-containing MAGUK protein 3, Carma 3, CARD10, CARMA3

Target/Specificity

This CARD10 antibody is generated from rabbits immunized with a KLH conjugated synthetic peptide between 518-546 amino acids from the Central region of human CARD10.

Dilution

WB~~1:1000
E~~Use at an assay dependent concentration.

Format

Purified polyclonal antibody supplied in PBS with 0.09% (W/V) sodium azide. This antibody is purified through a protein A column, followed by peptide affinity purification.

Storage

Maintain refrigerated at 2-8°C for up to 2 weeks. For long term storage store at -20°C in small aliquots to prevent freeze-thaw cycles.

Precautions

CARD10 Antibody (Center) is for research use only and not for use in diagnostic or therapeutic procedures.

CARD10 Antibody (Center) - Protein Information

Name CARD10

Synonyms CARMA3

Function Scaffold protein that plays an important role in mediating the activation of NF-kappa-B via BCL10 or EGFR.

Cellular Location

Cytoplasm.

Tissue Location

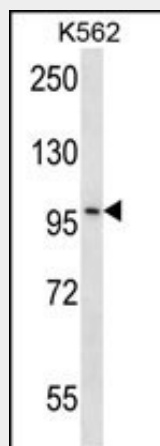
Detected in adult heart, kidney and liver; lower levels in intestine, placenta, muscle and lung. Also found in fetal lung, liver and kidney

CARD10 Antibody (Center) - Protocols

Provided below are standard protocols that you may find useful for product applications.

- [Western Blot](#)
- [Blocking Peptides](#)
- [Dot Blot](#)
- [Immunohistochemistry](#)
- [Immunofluorescence](#)
- [Immunoprecipitation](#)
- [Flow Cytometry](#)
- [Cell Culture](#)

CARD10 Antibody (Center) - Images



CARD10 Antibody (Center) (Cat. #AP14373c) western blot analysis in K562 cell line lysates (35ug/lane). This demonstrates the CARD10 antibody detected the CARD10 protein (arrow).

CARD10 Antibody (Center) - Background

The caspase recruitment domain (CARD) is a protein module that consists of 6 or 7 antiparallel alpha helices. It participates in apoptosis signaling through highly specific protein-protein homophilic interactions. Like several other CARD proteins, CARD10 belongs to the membrane-associated guanylate kinase (MAGUK) family and activates NF-kappa-B (NFKB; see MIM 164011) through BCL10 (MIM 603517) (Wang et al., 2001 [PubMed 11259443]).

CARD10 Antibody (Center) - References

- Bailey, S.D., et al. Diabetes Care 33(10):2250-2253(2010)
Davila, S., et al. Genes Immun. 11(3):232-238(2010)
Talmud, P.J., et al. Am. J. Hum. Genet. 85(5):628-642(2009)
Rehman, A.O., et al. Int J Oral Sci 1(3):105-118(2009)
Martin, D., et al. J. Biol. Chem. 284(10):6038-6042(2009)