

GTF2A1L Antibody (C-term)
Affinity Purified Rabbit Polyclonal Antibody (Pab)
Catalog # AP14377b

Specification

GTF2A1L Antibody (C-term) - Product Information

Application	WB,E
Primary Accession	O9UNN4
Other Accession	O8R4I4 , NP_006863.2
Reactivity	Human
Predicted	Mouse
Host	Rabbit
Clonality	Polyclonal
Isotype	Rabbit IgG
Calculated MW	52444
Antigen Region	399-428

GTF2A1L Antibody (C-term) - Additional Information

Gene ID 11036

Other Names

TFIIA-alpha and beta-like factor, General transcription factor II A, 1-like factor, GTF2A1L, ALF, GTF2A1LF

Target/Specificity

This GTF2A1L antibody is generated from rabbits immunized with a KLH conjugated synthetic peptide between 399-428 amino acids from the C-terminal region of human GTF2A1L.

Dilution

WB~~1:1000

E~~Use at an assay dependent concentration.

Format

Purified polyclonal antibody supplied in PBS with 0.09% (W/V) sodium azide. This antibody is purified through a protein A column, followed by peptide affinity purification.

Storage

Maintain refrigerated at 2-8°C for up to 2 weeks. For long term storage store at -20°C in small aliquots to prevent freeze-thaw cycles.

Precautions

GTF2A1L Antibody (C-term) is for research use only and not for use in diagnostic or therapeutic procedures.

GTF2A1L Antibody (C-term) - Protein Information

Name GTF2A1L

Synonyms ALF, GTF2A1LF

Function May function as a testis specific transcription factor. Binds DNA in conjunction with GTF2A2 and TBP (the TATA-binding protein) and together with GTF2A2, allows mRNA transcription.

Cellular Location

Nucleus. Note=Mainly localizes in the annulus and partly in acrosomal cap area of spermatozoa

Tissue Location

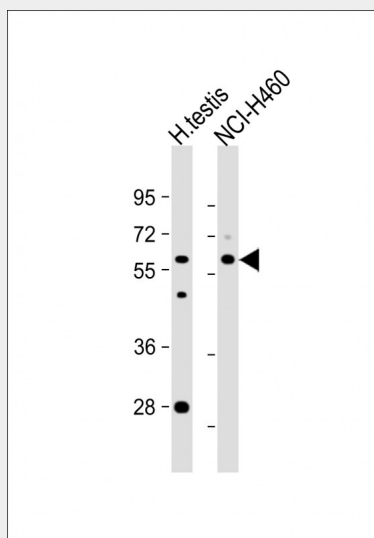
Testis specific. Detected in adult testis mostly in round and elongating spermatids (at protein level). Detected in testis

GTF2A1L Antibody (C-term) - Protocols

Provided below are standard protocols that you may find useful for product applications.

- [Western Blot](#)
- [Blocking Peptides](#)
- [Dot Blot](#)
- [Immunohistochemistry](#)
- [Immunofluorescence](#)
- [Immunoprecipitation](#)
- [Flow Cytometry](#)
- [Cell Culture](#)

GTF2A1L Antibody (C-term) - Images



All lanes : Anti-GTF2A1L Antibody (C-term) at 1:1000 dilution Lane 1: human testis lysate Lane 2: NCI-H460 whole cell lysate Lysates/proteins at 20 µg per lane. Secondary Goat Anti-Rabbit IgG, (H+L), Peroxidase conjugated at 1/10000 dilution. Predicted band size : 52 kDa Blocking/Dilution buffer: 5% NFDM/TBST.

GTF2A1L Antibody (C-term) - Background

The assembly and stability of the RNA polymerase II transcription pre-initiation complex on a eukaryotic core promoter involve the effects of TFIIA on the interaction between

TATA-binding protein (TBP) and DNA. This gene encodes a germ cell-specific counterpart of the large (alpha/beta) subunit of general transcription factor TFIIA that is able to stabilize the binding of TBP to DNA and may be uniquely important to testis biology. Alternative splicing for this locus has been observed and two variants, encoding distinct isoforms, have been identified. Co-transcription of this gene and the neighboring upstream gene generates a rare transcript (SALF), which encodes a fusion protein comprised of sequence sharing identity with each individual gene product.

GTF2A1L Antibody (C-term) - References

Rose, J.E., et al. Mol. Med. 16 (7-8), 247-253 (2010) :
Kim, M., et al. J. Biol. Chem. 281(45):34288-34298(2006)
Howe, M.L., et al. Stem Cells Dev. 15(2):175-190(2006)
Huang, M., et al. Int. J. Mol. Med. 17(4):599-604(2006)
Upadhyaya, A.B., et al. J. Biol. Chem. 277(37):34208-34216(2002)