

UBE2J1 Antibody (N-term)
Affinity Purified Rabbit Polyclonal Antibody (Pab)
Catalog # AP14379a**Specification**

UBE2J1 Antibody (N-term) - Product Information

Application	WB,E
Primary Accession	O9Y385
Other Accession	O9JJZ4 , NP_057105.2
Reactivity	Human
Predicted	Mouse
Host	Rabbit
Clonality	Polyclonal
Isotype	Rabbit IgG
Calculated MW	35199
Antigen Region	1-30

UBE2J1 Antibody (N-term) - Additional Information**Gene ID** 51465**Other Names**

Ubiquitin-conjugating enzyme E2 J1, Non-canonical ubiquitin-conjugating enzyme 1, NCUBE-1, Yeast ubiquitin-conjugating enzyme UBC6 homolog E, HsUBC6e, UBE2J1, NCUBE1

Target/Specificity

This UBE2J1 antibody is generated from rabbits immunized with a KLH conjugated synthetic peptide between 1-30 amino acids from the N-terminal region of human UBE2J1.

Dilution

WB~~1:1000

E~~Use at an assay dependent concentration.

Format

Purified polyclonal antibody supplied in PBS with 0.09% (W/V) sodium azide. This antibody is purified through a protein A column, followed by peptide affinity purification.

Storage

Maintain refrigerated at 2-8°C for up to 2 weeks. For long term storage store at -20°C in small aliquots to prevent freeze-thaw cycles.

Precautions

UBE2J1 Antibody (N-term) is for research use only and not for use in diagnostic or therapeutic procedures.

UBE2J1 Antibody (N-term) - Protein Information**Name** UBE2J1 ([HGNC:17598](#))

Synonyms NCUBE1

Function Catalyzes the covalent attachment of ubiquitin to other proteins. Functions in the selective degradation of misfolded membrane proteins from the endoplasmic reticulum (ERAD) and is essential for cells to recover from ER stress (PubMed:[28321712](#)). Plays a role in MAPKAPK2-dependent translational control of TNF-alpha synthesis (PubMed:[24020373](#)). Also acts as a platform for perinuclear positioning of the endosomal system by mediating ubiquitination of SQSTM1 through interaction with the E3 ubiquitin-protein ligase RNF26 (PubMed:[33472082](#)). Plays a role in male fecundity through the interaction with the E3 ubiquitin-protein ligase RNF133 (PubMed:[35831855](#)).

Cellular Location

Endoplasmic reticulum membrane; Single-pass type IV membrane protein

Tissue Location

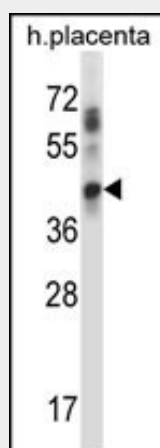
Expressed in testes..

UBE2J1 Antibody (N-term) - Protocols

Provided below are standard protocols that you may find useful for product applications.

- [Western Blot](#)
- [Blocking Peptides](#)
- [Dot Blot](#)
- [Immunohistochemistry](#)
- [Immunofluorescence](#)
- [Immunoprecipitation](#)
- [Flow Cytometry](#)
- [Cell Culture](#)

UBE2J1 Antibody (N-term) - Images



UBE2J1 Antibody (N-term) (Cat. #AP14379a) western blot analysis in human placenta tissue lysates (35ug/lane). This demonstrates the UBE2J1 antibody detected the UBE2J1 protein (arrow).

UBE2J1 Antibody (N-term) - Background

The modification of proteins with ubiquitin is an important cellular mechanism for targeting abnormal or short-lived proteins for degradation. Ubiquitination involves at least three

classes of enzymes: ubiquitin-activating enzymes, or E1s, ubiquitin-conjugating enzymes, or E2s, and ubiquitin-protein ligases, or E3s. This gene encodes a member of the E2 ubiquitin-conjugating enzyme family. This enzyme is located in the membrane of the endoplasmic reticulum (ER) and may contribute to quality control ER-associated degradation by the ubiquitin-proteasome system.

UBE2J1 Antibody (N-term) - References

Pattaro, C., et al. BMC Med. Genet. 11, 41 (2010) :
Olsen, J.V., et al. Cell 127(3):635-648(2006)
Oh, R.S., et al. J. Biol. Chem. 281(30):21480-21490(2006)
Wu, C.J., et al. EMBO J. 24(10):1886-1898(2005)
Mungall, A.J., et al. Nature 425(6960):805-811(2003)