

BCAS3 Antibody (C-term)
Purified Rabbit Polyclonal Antibody (Pab)
Catalog # AP1437b**Specification**

BCAS3 Antibody (C-term) - Product Information

Application	WB,E
Primary Accession	Q9H6U6
Reactivity	Human
Host	Rabbit
Clonality	Polyclonal
Isotype	Rabbit IgG
Calculated MW	101237
Antigen Region	835-865

BCAS3 Antibody (C-term) - Additional Information**Gene ID** 54828**Other Names**

Breast carcinoma-amplified sequence 3 {ECO:0000312|HGNC:HGNC:14347,
ECO:0000312|MIM:607470}, GAOB1, BCAS3 {ECO:0000312|HGNC:HGNC:14347,
ECO:0000312|MIM:607470}

Target/Specificity

This BCAS3 antibody is generated from rabbits immunized with a KLH conjugated synthetic peptide between 835-865 amino acids from the C-terminal region of human BCAS3.

Dilution

WB~~1:1000

E~~Use at an assay dependent concentration.

Format

Purified polyclonal antibody supplied in PBS with 0.09% (W/V) sodium azide. This antibody is prepared by Saturated Ammonium Sulfate (SAS) precipitation followed by dialysis against PBS.

Storage

Maintain refrigerated at 2-8°C for up to 2 weeks. For long term storage store at -20°C in small aliquots to prevent freeze-thaw cycles.

Precautions

BCAS3 Antibody (C-term) is for research use only and not for use in diagnostic or therapeutic procedures.

BCAS3 Antibody (C-term) - Protein Information**Name** BCAS3 {ECO:0000312|HGNC:HGNC:14347, ECO:0000312|MIM:607470}

Function Plays a role in angiogenesis. Participates in the regulation of cell polarity and directional endothelial cell migration by mediating both the activation and recruitment of CDC42 and the reorganization of the actin cytoskeleton at the cell leading edge. Promotes filipodia formation (By similarity). Functions synergistically with PELP1 as a transcriptional coactivator of estrogen receptor- responsive genes. Stimulates histone acetyltransferase activity. Binds to chromatin. Plays a regulatory role in autophagic activity. In complex with PHAF1, associates with the preautophagosomal structure during both non-selective and selective autophagy (PubMed:[33499712](#)). Probably binds phosphatidylinositol 3-phosphate (PtdIns3P) which would mediate the recruitment preautophagosomal structures (PubMed:[33499712](#)).

Cellular Location

Nucleus. Cytoplasm. Cytoplasm, cytoskeleton {ECO:0000250|UniProtKB:Q8CCN5}. Preautophagosomal structure. Note=Localizes in the cytoplasm in stationary cells. Translocates from the cytoplasm to the leading edge in motile cells. Colocalizes with microtubules and intermediate filaments in both stationary and motile cells (By similarity) Associates with chromatin. Recruited to estrogen receptor-induced promoters in a PELP1-dependent manner. The BCAS3:PHAF1 complex is recruited to the preautophagosomal structures adjacent to the damaged mitochondria upon mitophagy in a PRKN-PINK1 dependent manner (PubMed:33499712). {ECO:0000250|UniProtKB:Q8CCN5, ECO:0000269|PubMed:17505058, ECO:0000269|PubMed:33499712}

Tissue Location

Expressed in stomach, liver, lung, kidney, prostate, testis, thyroid gland, adrenal gland, brain, heart, skeletal muscle, colon, spleen, small intestine, placenta, blood leukocyte and mammary epithelial cells. Expressed in undifferentiated ES cells Expressed in blood islands and nascent blood vessels derived from differentiated ES cells into embryoid bodies (BD). Expressed in endothelial cells. Not detected in brain. Expressed in brain tumors (at protein level). Expressed in brain. Highly expressed in breast cancers and in glioma cell lines.

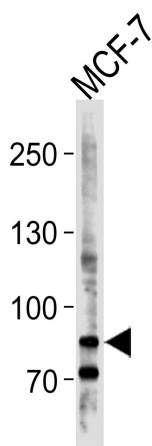
BCAS3 Antibody (C-term) - Protocols

Provided below are standard protocols that you may find useful for product applications.

- [Western Blot](#)
- [Blocking Peptides](#)
- [Dot Blot](#)
- [Immunohistochemistry](#)
- [Immunofluorescence](#)
- [Immunoprecipitation](#)
- [Flow Cytometry](#)
- [Cell Culture](#)

BCAS3 Antibody (C-term) - Images





Western blot analysis of lysate from MCF-7 cell line, using BCAS3 Antibody (C-term)(Cat. #AP1437b). AP1437b was diluted at 1:1000 at each lane. A goat anti-rabbit IgG H&L(HRP) at 1:5000 dilution was used as the secondary antibody. Lysate at 35ug per lane.

BCAS3 Antibody (C-term) - Background

BCAS3 is physically associated with histone H3 and histone acetyltransferase complex protein P/CAF (p300/CBP-associated factor) and possesses histone acetyltransferase activity. In breast cancer, several chromosomal sites frequently undergo amplification, implicating the location of genes important for tumor development and progression.

BCAS3 Antibody (C-term) - References

Baerlund M., Genes Chromosomes Cancer 35:311-317(2002).