

STEAP1 Antibody (N-term)
Affinity Purified Rabbit Polyclonal Antibody (Pab)
Catalog # AP14380a**Specification**

STEAP1 Antibody (N-term) - Product Information

Application	WB, IHC-P,E
Primary Accession	O9UHE8
Other Accession	NP_036581.1
Reactivity	Human
Host	Rabbit
Clonality	Polyclonal
Isotype	Rabbit IgG
Calculated MW	39851
Antigen Region	2-31

STEAP1 Antibody (N-term) - Additional Information**Gene ID** 26872**Other Names**

Metalloreductase STEAP1, 1161-, Six-transmembrane epithelial antigen of prostate 1, STEAP1, PRSS24, STEAP

Target/Specificity

This STEAP1 antibody is generated from rabbits immunized with a KLH conjugated synthetic peptide between 2-31 amino acids from the N-terminal region of human STEAP1.

Dilution

WB~~1:1000

IHC-P~~1:10~50

Format

Purified polyclonal antibody supplied in PBS with 0.09% (W/V) sodium azide. This antibody is purified through a protein A column, followed by peptide affinity purification.

Storage

Maintain refrigerated at 2-8°C for up to 2 weeks. For long term storage store at -20°C in small aliquots to prevent freeze-thaw cycles.

Precautions

STEAP1 Antibody (N-term) is for research use only and not for use in diagnostic or therapeutic procedures.

STEAP1 Antibody (N-term) - Protein Information**Name** STEAP1

Synonyms PRSS24, STEAP

Function Does not function as a metalloreductase due to the absence of binding sites for the electron-donating substrate NADPH. Promotes Fe(3+) reduction when fused to the NADPH-binding domain of STEAP4.

Cellular Location

Endosome membrane {ECO:0000250|UniProtKB:Q9CWR7}; Multi-pass membrane protein. Cell membrane; Multi-pass membrane protein

Tissue Location

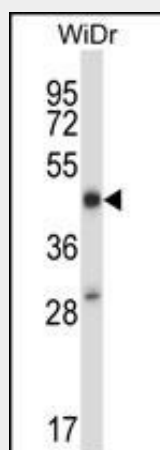
Ubiquitously expressed. Highly expressed in prostate tumors.

STEAP1 Antibody (N-term) - Protocols

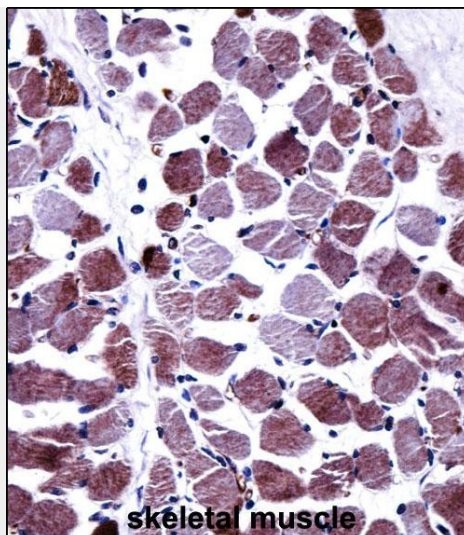
Provided below are standard protocols that you may find useful for product applications.

- [Western Blot](#)
- [Blocking Peptides](#)
- [Dot Blot](#)
- [Immunohistochemistry](#)
- [Immunofluorescence](#)
- [Immunoprecipitation](#)
- [Flow Cytometry](#)
- [Cell Culture](#)

STEAP1 Antibody (N-term) - Images



STEAP1 Antibody (N-term) (Cat. #AP14380a) western blot analysis in WiDr cell line lysates (35ug/lane). This demonstrates the STEAP1 antibody detected the STEAP1 protein (arrow).



STEAP1 Antibody (N-term) (AP14380a) immunohistochemistry analysis in formalin fixed and paraffin embedded human skeletal muscle followed by peroxidase conjugation of the secondary antibody and DAB staining. This data demonstrates the use of STEAP1 Antibody (N-term) for immunohistochemistry. Clinical relevance has not been evaluated.

STEAP1 Antibody (N-term) - Background

This gene is predominantly expressed in prostate tissue, and is found to be upregulated in multiple cancer cell lines. The gene product is predicted to be a six-transmembrane protein, and was shown to be a cell surface antigen significantly expressed at cell-cell junctions.

STEAP1 Antibody (N-term) - References

Valenti, M.T., et al. J. Endocrinol. Invest. 33(4):244-249(2010)
Johnatty, S.E., et al. PLoS Genet. 6 (7), E1001016 (2010) :
Vaghjiani, R.J., et al. Tissue Eng Part A 15(8):2073-2083(2009)
Mavaddat, N., et al. Cancer Epidemiol. Biomarkers Prev. 18(1):255-259(2009)
Maia, C.J., et al. Endocrine 34 (1-3), 108-116 (2008) :