

PPEF1 Antibody (Center)
Affinity Purified Rabbit Polyclonal Antibody (Pab)
Catalog # AP14395c

Specification

PPEF1 Antibody (Center) - Product Information

Application	WB,E
Primary Accession	O14829
Other Accession	NP_006231.2 , NP_689410.1
Reactivity	Human
Host	Rabbit
Clonality	Polyclonal
Isotype	Rabbit IgG
Calculated MW	75792
Antigen Region	298-327

PPEF1 Antibody (Center) - Additional Information

Gene ID 5475

Other Names

Serine/threonine-protein phosphatase with EF-hands 1, PPEF-1, Protein phosphatase with EF calcium-binding domain, PPEF, Serine/threonine-protein phosphatase 7, PP7, PPEF1, PPEF, PPP7C

Target/Specificity

This PPEF1 antibody is generated from rabbits immunized with a KLH conjugated synthetic peptide between 298-327 amino acids from the Central region of human PPEF1.

Dilution

WB~~1:1000

E~~Use at an assay dependent concentration.

Format

Purified polyclonal antibody supplied in PBS with 0.09% (W/V) sodium azide. This antibody is purified through a protein A column, followed by peptide affinity purification.

Storage

Maintain refrigerated at 2-8°C for up to 2 weeks. For long term storage store at -20°C in small aliquots to prevent freeze-thaw cycles.

Precautions

PPEF1 Antibody (Center) is for research use only and not for use in diagnostic or therapeutic procedures.

PPEF1 Antibody (Center) - Protein Information

Name PPEF1

Synonyms PPEF, PPP7C

Function May have a role in the recovery or adaptation response of photoreceptors. May have a role in development.

Tissue Location

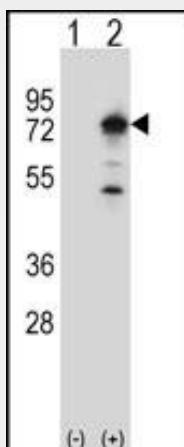
Detected in retina and retinal derived Y-79 retinoblastoma cells. Also found in fetal brain

PPEF1 Antibody (Center) - Protocols

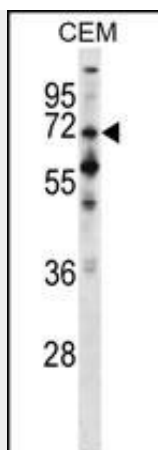
Provided below are standard protocols that you may find useful for product applications.

- [Western Blot](#)
- [Blocking Peptides](#)
- [Dot Blot](#)
- [Immunohistochemistry](#)
- [Immunofluorescence](#)
- [Immunoprecipitation](#)
- [Flow Cytometry](#)
- [Cell Culture](#)

PPEF1 Antibody (Center) - Images



Western blot analysis of PPEF1 (arrow) using rabbit polyclonal PPEF1 Antibody (Center) (Cat. #AP14395c). 293 cell lysates (2 ug/lane) either nontransfected (Lane 1) or transiently transfected (Lane 2) with the PPEF1 gene.



PPEF1 Antibody (Center) (Cat. #AP14395c) western blot analysis in CEM cell line lysates (35ug/lane). This demonstrates the PPEF1 antibody detected the PPEF1 protein (arrow).

PPEF1 Antibody (Center) - Background

This gene encodes a member of the serine/threonine protein phosphatase with EF-hand motif family. The protein contains a protein phosphatase catalytic domain, and at least two EF-hand calcium-binding motifs in its C terminus. Although its substrate(s) is unknown, the encoded protein has been suggested to play a role in specific sensory neuron function and/or development. This gene shares high sequence similarity with the *Drosophila* retinal degeneration C (rdgC) gene. Several alternatively spliced transcript variants, each encoding a distinct isoform, have been described.

PPEF1 Antibody (Center) - References

Ross, M.T., et al. *Nature* 434(7031):325-337(2005)
Hillman, R.T., et al. *Genome Biol.* 5 (2), R8 (2004) :
Gevaert, K., et al. *Nat. Biotechnol.* 21(5):566-569(2003)
Kutuzov, M.A., et al. *Biochem. Biophys. Res. Commun.* 293(3):1047-1052(2002)
Ramulu, P., et al. *Mol. Cell. Biol.* 21(24):8605-8614(2001)