

**POTE Antibody (C-term)**  
**Affinity Purified Rabbit Polyclonal Antibody (Pab)**  
**Catalog # AP1439d**

**Specification**

---

**POTE Antibody (C-term) - Product Information**

Application	WB, IHC-P,E
Primary Accession	<a href="#">Q86YR6</a>
Reactivity	Human
Host	Rabbit
Clonality	Polyclonal
Isotype	Rabbit IgG
Antigen Region	542-571

**POTE Antibody (C-term) - Additional Information**

**Gene ID** 100288966;317754

**Other Names**

POTE ankyrin domain family member D, ANKRD26-like family B member 3, Ankyrin repeat domain-containing protein 21, Prostate, ovary, testis-expressed protein, Protein POTE, POTED, A26B3, ANKRD21, POTE

**Target/Specificity**

This POTE antibody is generated from rabbits immunized with a KLH conjugated synthetic peptide between 542-571 amino acids from the C-terminal region of human POTE.

**Dilution**

WB~~1:1000

IHC-P~~1:10~50

E~~Use at an assay dependent concentration.

**Format**

Purified polyclonal antibody supplied in PBS with 0.09% (W/V) sodium azide. This antibody is purified through a protein A column, followed by peptide affinity purification.

**Storage**

Maintain refrigerated at 2-8°C for up to 2 weeks. For long term storage store at -20°C in small aliquots to prevent freeze-thaw cycles.

**Precautions**

POTE Antibody (C-term) is for research use only and not for use in diagnostic or therapeutic procedures.

**POTE Antibody (C-term) - Protein Information**

**Name** POTED

**Synonyms** A26B3, ANKRD21, POTE

**Cellular Location**

Cell membrane; Peripheral membrane protein

**Tissue Location**

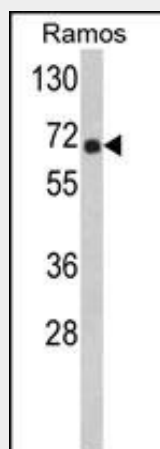
Expressed in prostate, ovary, testis, placenta and prostate cancer cell lines. Localizes to basal and terminal prostate epithelial cells.

**POTE Antibody (C-term) - Protocols**

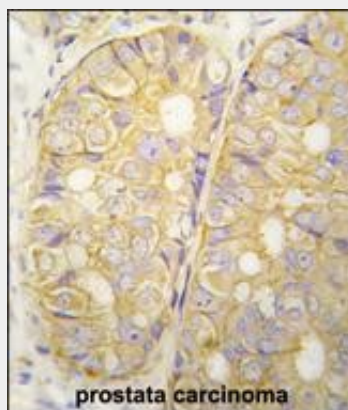
Provided below are standard protocols that you may find useful for product applications.

- [Western Blot](#)
- [Blocking Peptides](#)
- [Dot Blot](#)
- [Immunohistochemistry](#)
- [Immunofluorescence](#)
- [Immunoprecipitation](#)
- [Flow Cytometry](#)
- [Cell Culture](#)

**POTE Antibody (C-term) - Images**



Western blot analysis of POTE Antibody (C-term) (Cat. #AP1439d) in Ramos cell line lysates (35ug/lane). POTE (arrow) was detected using the purified Pab.



Formalin-fixed and paraffin-embedded human prostata carcinoma tissue reacted with POTE antibody (C-term) (Cat.#AP1439d), which was peroxidase-conjugated to the secondary antibody, followed by DAB staining. This data demonstrates the use of this antibody for immunohistochemistry; clinical relevance has not been evaluated.

#### **POTE Antibody (C-term) - Background**

The POTE protein contains seven ankyrin repeats between amino acids 140 and 380. Expression of POTE in prostate cancer and its undetectable expression in normal essential tissues make POTE a candidate for the immunotherapy of prostate cancer. The existence of a large number of closely related but rapidly diverging members, their location on multiple chromosomes and their limited expression pattern suggest an important role for the POTE gene family in reproductive processes.

#### **POTE Antibody (C-term) - References**

Bera T.K., Proc. Natl. Acad. Sci. U.S.A. 99:16975-16980(2002).  
Bera,T.K., Gene 337, 45-53 (2004)