

NANOS1 Antibody (Center)
Affinity Purified Rabbit Polyclonal Antibody (Pab)
Catalog # AP14401c**Specification**

NANOS1 Antibody (Center) - Product Information

Application	IHC-P, WB,E
Primary Accession	Q8WY41
Other Accession	NP_955631.1
Reactivity	Human
Host	Rabbit
Clonality	Polyclonal
Isotype	Rabbit IgG
Calculated MW	30230
Antigen Region	96-124

NANOS1 Antibody (Center) - Additional Information**Gene ID** 340719**Other Names**

Nanos homolog 1, NOS-1, EC_Rep1a, NANOS1, NOS1

Target/Specificity

This NANOS1 antibody is generated from rabbits immunized with a KLH conjugated synthetic peptide between 96-124 amino acids from the Central region of human NANOS1.

Dilution

IHC-P~~1:10~50

WB~~1:1000

E~~Use at an assay dependent concentration.

Format

Purified polyclonal antibody supplied in PBS with 0.09% (W/V) sodium azide. This antibody is purified through a protein A column, followed by peptide affinity purification.

Storage

Maintain refrigerated at 2-8°C for up to 2 weeks. For long term storage store at -20°C in small aliquots to prevent freeze-thaw cycles.

Precautions

NANOS1 Antibody (Center) is for research use only and not for use in diagnostic or therapeutic procedures.

NANOS1 Antibody (Center) - Protein Information**Name** NANOS1

Synonyms NOS1

Function May act as a translational repressor which regulates translation of specific mRNAs by forming a complex with PUM2 that associates with the 3'-UTR of mRNA targets. Capable of interfering with the proadhesive and anti-invasive functions of E-cadherin. Up-regulates the production of MMP14 to promote tumor cell invasion.

Cellular Location

Cytoplasm, perinuclear region. Cytoplasm Note=Colocalizes with SNAPIN and PUM2 in the perinuclear region of germ cells.

Tissue Location

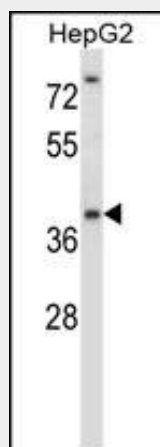
Testis and ovary (at protein level). Predominantly expressed in testis. Specifically expressed during germline development. In adult tissues, it is mainly expressed in spermatogonia, the stem cells of the germline. Also expressed during meiosis in spermatocytes. Not present in late, post-meiotic stage germ cells Expressed in fetal ovaries, while it is weakly or not expressed in mature postmeiotic oocytes, suggesting that it may be expressed in premeiotic female germ cells. Expressed at high levels only in the E- cadherin deficient cell lines. Highly expressed in lung carcinomas and mostly detected in invasive tumor cells and its expression correlates with tumor aggressiveness.

NANOS1 Antibody (Center) - Protocols

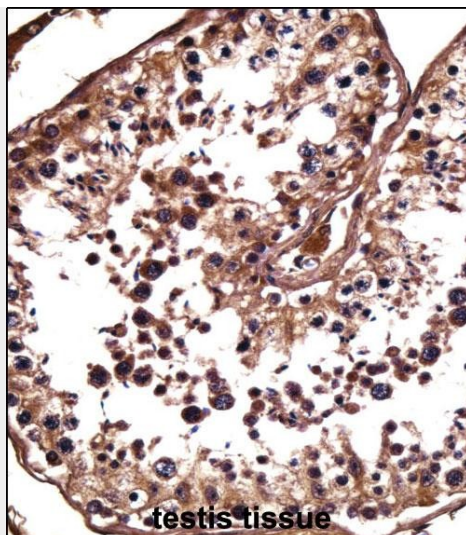
Provided below are standard protocols that you may find useful for product applications.

- [Western Blot](#)
- [Blocking Peptides](#)
- [Dot Blot](#)
- [Immunohistochemistry](#)
- [Immunofluorescence](#)
- [Immunoprecipitation](#)
- [Flow Cytometry](#)
- [Cell Culture](#)

NANOS1 Antibody (Center) - Images



NANOS1 Antibody (Center) (Cat. #AP14401c) western blot analysis in HepG2 cell line lysates (35ug/lane). This demonstrates the NANOS1 antibody detected the NANOS1 protein (arrow).



NANOS1 Antibody (Center) (AP14401c) immunohistochemistry analysis in formalin fixed and paraffin embedded human testis tissue followed by peroxidase conjugation of the secondary antibody and DAB staining. This data demonstrates the use of NANOS1 Antibody (Center) for immunohistochemistry. Clinical relevance has not been evaluated.

NANOS1 Antibody (Center) - Background

NANOS1 may regulate translation of specific mRNAs by forming a complex with PUM2 that associates with the 3'-UTR of mRNA targets.

NANOS1 Antibody (Center) - References

Ginter-Matuszewska, B., et al. Mol. Hum. Reprod. 15(3):173-179(2009)
Bonnomet, A., et al. Oncogene 27(26):3692-3699(2008)
Strumane, K., et al. Cancer Res. 66(20):10007-10015(2006)
Kurokawa, H., et al. Dev. Growth Differ. 48(3):209-221(2006)
Deloukas, P., et al. Nature 429(6990):375-381(2004)