

**PPEF2 Antibody (Center)**  
**Affinity Purified Rabbit Polyclonal Antibody (Pab)**  
**Catalog # AP14402c**

**Specification**

---

**PPEF2 Antibody (Center) - Product Information**

Application	WB, IHC-P,E
Primary Accession	<a href="#">O14830</a>
Other Accession	<a href="#">NP_006230.2</a>
Reactivity	Human
Host	Rabbit
Clonality	Polyclonal
Isotype	Rabbit IgG
Calculated MW	86518
Antigen Region	304-333

**PPEF2 Antibody (Center) - Additional Information**

**Gene ID** 5470

**Other Names**

Serine/threonine-protein phosphatase with EF-hands 2, PPEF-2, PPEF2

**Target/Specificity**

This PPEF2 antibody is generated from rabbits immunized with a KLH conjugated synthetic peptide between 304-333 amino acids from the Central region of human PPEF2.

**Dilution**

WB~~1:1000

IHC-P~~1:10~50

E~~Use at an assay dependent concentration.

**Format**

Purified polyclonal antibody supplied in PBS with 0.09% (W/V) sodium azide. This antibody is purified through a protein A column, followed by peptide affinity purification.

**Storage**

Maintain refrigerated at 2-8°C for up to 2 weeks. For long term storage store at -20°C in small aliquots to prevent freeze-thaw cycles.

**Precautions**

PPEF2 Antibody (Center) is for research use only and not for use in diagnostic or therapeutic procedures.

**PPEF2 Antibody (Center) - Protein Information**

**Name** PPEF2

**Function** May play a role in phototransduction. May dephosphorylate photoactivated rhodopsin. May function as a calcium sensing regulator of ionic currents, energy production or synaptic transmission.

**Cellular Location**

Cytoplasm. Cell projection, cilium, photoreceptor outer segment. Photoreceptor inner segment  
Note=Localized to photoreceptors, PPEF-2(L) is at least 2 fold more abundant in rod inner segments than in the outer segments

**Tissue Location**

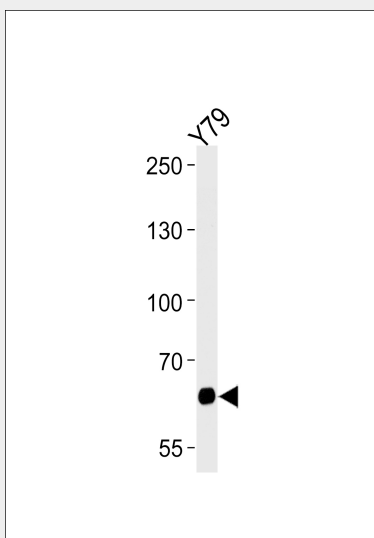
Retinal specific.

**PPEF2 Antibody (Center) - Protocols**

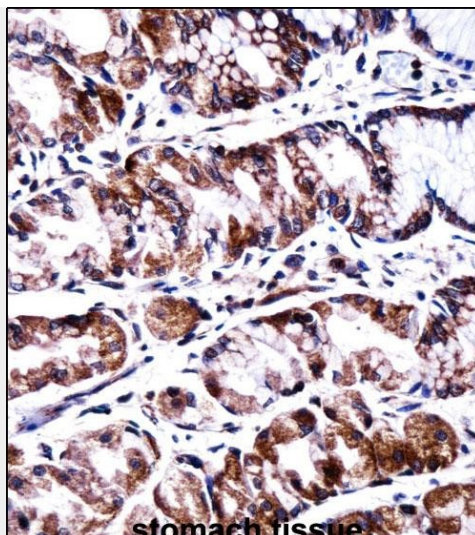
Provided below are standard protocols that you may find useful for product applications.

- [Western Blot](#)
- [Blocking Peptides](#)
- [Dot Blot](#)
- [Immunohistochemistry](#)
- [Immunofluorescence](#)
- [Immunoprecipitation](#)
- [Flow Cytometry](#)
- [Cell Culture](#)

**PPEF2 Antibody (Center) - Images**



Western blot analysis of lysate from Y79 cell line, using PPEF2 Antibody (Center)(Cat. #AP14402c). AP14402c was diluted at 1:1000 at each lane. A goat anti-rabbit IgG H&L(HRP) at 1:5000 dilution was used as the secondary antibody. Lysate at 35ug per lane.



stomach tissue

PPEF2 Antibody (Center) (AP14402c) immunohistochemistry analysis in formalin fixed and paraffin embedded human stomach tissue followed by peroxidase conjugation of the secondary antibody and DAB staining. This data demonstrates the use of PPEF2 Antibody (Center) for immunohistochemistry. Clinical relevance has not been evaluated.

#### **PPEF2 Antibody (Center) - Background**

This gene encodes a member of the serine/threonine protein phosphatase with EF-hand motif family. The protein contains a protein phosphatase catalytic domain, and at least two EF-hand calcium-binding motifs in its C terminus. Although its substrate(s) is unknown, the encoded protein, which is expressed specifically in photoreceptors and the pineal, has been suggested to play a role in the visual system. This gene shares high sequence similarity with the *Drosophila* retinal degeneration C (*rdgC*) gene. [provided by RefSeq].

#### **PPEF2 Antibody (Center) - References**

Kutuzov, M.A., et al. *Biochem. Biophys. Res. Commun.* 293(3):1047-1052(2002)  
Ramulu, P., et al. *Mol. Cell. Biol.* 21(24):8605-8614(2001)  
Sherman, P.M., et al. *Proc. Natl. Acad. Sci. U.S.A.* 94(21):11639-11644(1997)